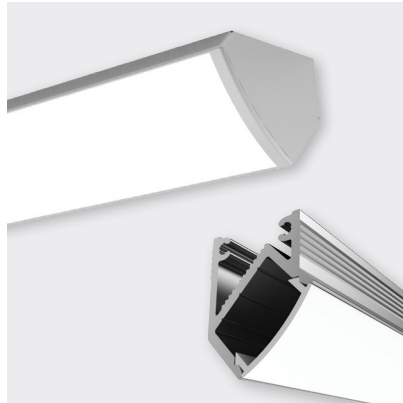




LOWLINE 03



FEATURES

- 45° angle
- W18 × H25.1mm
- Opal or clear polycarbonate diffuser
- Anodised aluminium, black or white powder-coat finishes
- Recess via friction-fit mounting system
- Recess into cabinetry with an angle detail
- Provides thermal & visual management for LED ribbon up to a maximum of Pro 18 or equivalent

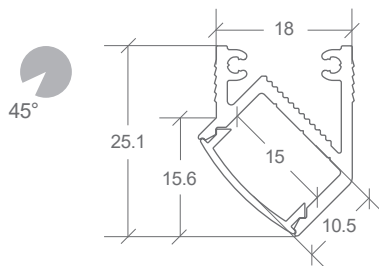
FINISH	DIFFUSER	CODE
ANODISED	OPAL	BL-LP-L03AO-XX
	CLEAR	BL-LP-L03AC-2M
BLACK	OPAL	BL-LP-L03BO-XX
	CLEAR	BL-LP-L03BC-2M
WHITE	OPAL	BL-LP-L03WO-XX
	CLEAR	BL-LP-L03WC-2M

XX = (2M) 2 METRE or (4M) 4 METRE LENGTHS

ACCESSORY	CODE
ALUMINIUM RIGHT & LEFT END CAP 2 PACK W18 × H25.1 × D2MM	BL-LP-L03X-EC-P

X = (A) ANODISED, (B) BLACK, OR (W) WHITE

DIMENSIONS



INSTALLATION

Friction-fit recess - requires rebate groove of 18.3mm (anodised) or 18.5mm (black or white powder-coat).

Bright Light recommends testing first to ensure a good fit.

