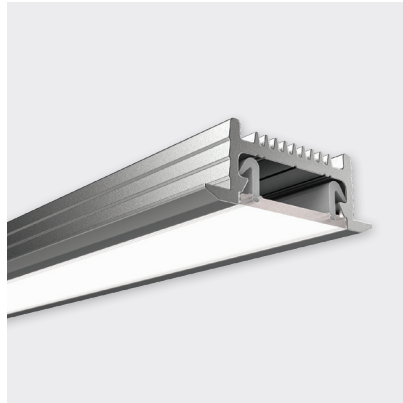




LOWLINE 02 MINI



FEATURES

- W27mm × H10mm (including 3mm trim)
- Rolled opal diffuser (continuous up to 50m)
- Anodised aluminium, black or white powder-coat finishes
- Recess via friction-fit mounting system
- Provides thermal management for LED ribbon up to a maximum of Pro 12 or equivalent
- For best visual performance COB LED is recommended to ensure a dot-free result

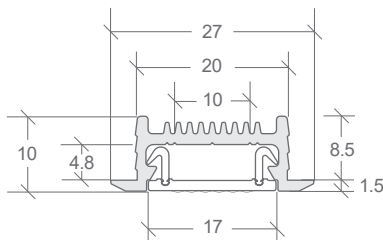
FINISH	DIFFUSER	CODE
ANODISED		BL-LP-L02MV2ARO-XX
BLACK	ROLLED OPAL	BL-LP-L02MV2BRO-XX
WHITE		BL-LP-L02MV2AWO-XX

ACCESSORY	CODE
ALUMINIUM END CAP W27 × H10 × D2MM (D5MM INCL TRIM)	BL-LP-L02MV2X-EC

END CAPS SOLD INDIVIDUALLY
X = (A) ANODISED, (B) BLACK, OR (W) WHITE

XX = (2M) 2 METRE or (4M) 4 METRE LENGTHS

DIMENSIONS



INSTALLATION

Friction-fit recess - requires rebate groove of 20.3mm (anodised) or 20.5mm (black or white powder-coat).

Bright Light recommends testing first to ensure a good fit.

