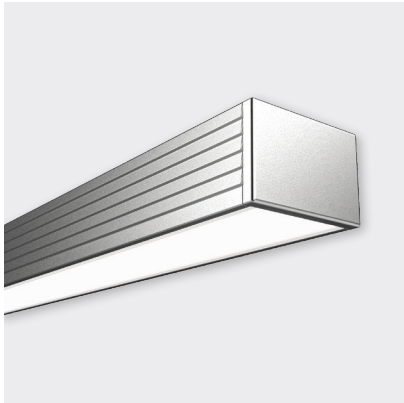




LOWLINE 01



FEATURES

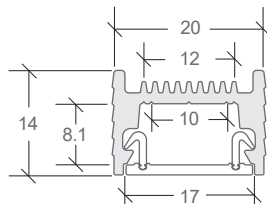
- W20 × H14mm
- Rolled opal diffuser (continuous up to 50m)
- Anodised aluminium
- Recess via friction-fit mounting system
- Trimless profile for recessing into cabinetry
- Provides thermal management and best visual performance for LED ribbon up to a maximum of Pro 12 or equivalent

FINISH	DIFFUSER	CODE	ACCESSORY	CODE
ANODISED	ROLLED OPAL	BL-LP-L01V2ARO-XX	ALUMINIUM END CAP W20 × H14 × D2MM	BL-LP-L01V2A-EC

XX = (2M) 2 METRE or (4M) 4 METRE LENGTHS

END CAPS SOLD INDIVIDUALLY

DIMENSIONS



INSTALLATION

Friction-fit recess - requires rebate groove of 20.3mm (anodised) or 20.5mm (black or white powder-coat).

Bright Light recommends testing first to ensure a good fit.

