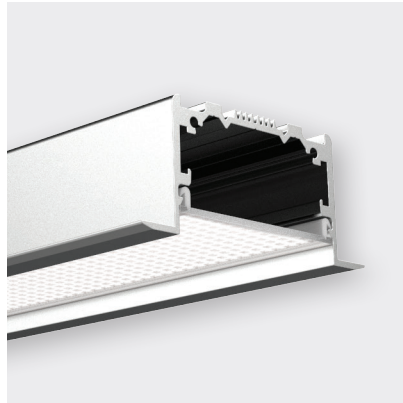




## HIGHLINE 03



### FEATURES

- W70 × H30.9mm (with 9mm trim)
- Prismatic diamond-cut diffuser (continuous up to 50m)
- Anodised aluminium, black or white powder-coat finishes
- Recess via mounting clip or screw-fix
- General and task lighting
- Provides thermal management for LED ribbon up to a maximum of Pro 30 or equivalent
- Semi-recessed diffusers have a lower glare perception and provided thermally safe, can have higher wattage LED products.

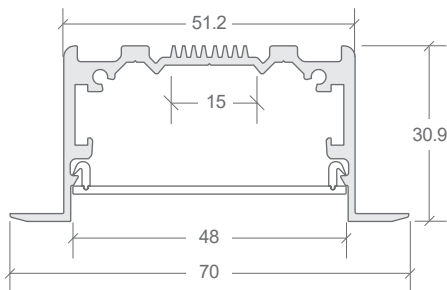
FINISH	DIFFUSER	CODE
ANODISED		BL-LP-H03V2ARP-XX
BLACK	ROLLED PRISMATIC	BL-LP-H03V2BRP-XX
WHITE		BL-LP-H03V2WRP-XX

XX = (2M) 2 METRE or (4M) 4 METRE LENGTHS

ACCESSORY	CODE
ALUMINIUM END CAP W70 × H30.9 × D3MM (D11.30MM INCL TRIM)	BL-LP-H03V2X-EC
HIGHLINE 03 MOUNTING CLIP	BL-LP-H03-MC
JOINER STRAIGHT	BL-LP-J211

END CAPS SOLD INDIVIDUALLY  
X = (A) ANODISED, (B) BLACK, OR (W) WHITE

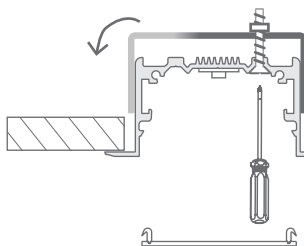
### DIMENSIONS



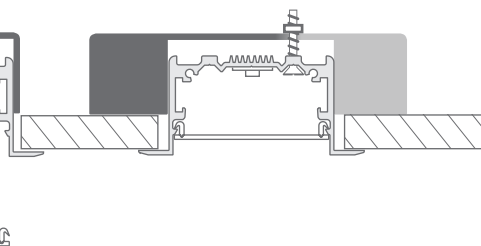
### INSTALLATION

SEE INSTALLATION GUIDE FOR DETAILED INSTALLATION INSTRUCTIONS.  
WHEN RECESSED WITH MOUNTING CLIPS, HIGHLINE 03 REQUIRES A CUT OUT OF 56-65MM. MOUNTING CLIPS SUITABLE FOR UP TO 15MM CEILING.

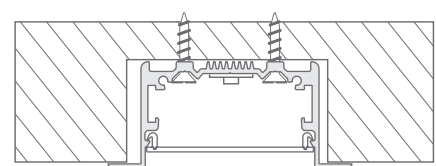
MOUNTING CLIP UNLOCKED



MOUNTING CLIP LOCKED



SCREW-FIT INSTALLATION



WHEN USED, CLIPS ARE RECOMMENDED WITHIN 100MM OF EACH END & EVENLY SPACED ALONG LENGTH.  
MAXIMUM DISTANCE OF 1M BETWEEN CLIPS.