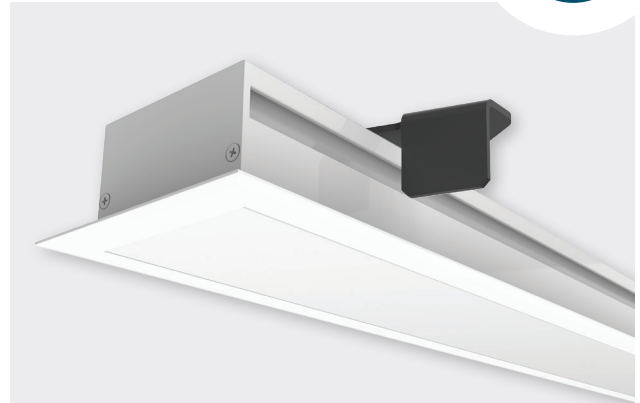
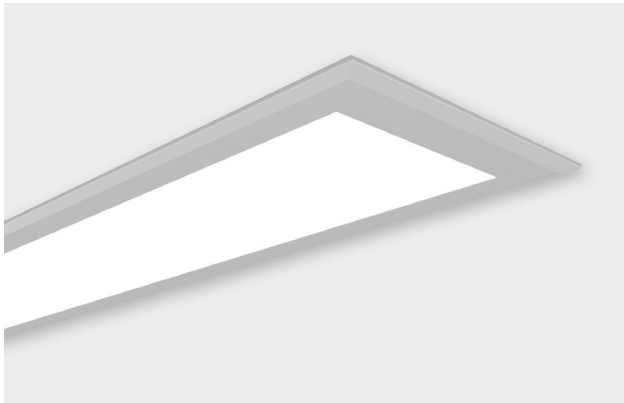




FLARE 33



FINISH	CODE
ANODISED	FLARE.33A
BLACK	FLARE.33B
WHITE	FLARE.33W

FEATURES

- W70mm x H33mm (with 10mm trim)
- Flush mounted satin opal polycarbonate diffuser
- Anodised aluminium, black, or white powder-coat
- Recess via mounting clip or screw-fix

FLARE 33 is designed for recessed applications & uses a mounting clip system for easy installation.

Similar to its counterpart Highline 03, FLARE 33 offers a flush opal diffuser, perfect for residential and commercial lighting projects. The stylish trim allows for a forgiving installation ensuring a clean finish.

This product provides thermal management for LED ribbon up to a maximum of Pro 30 or equivalent.

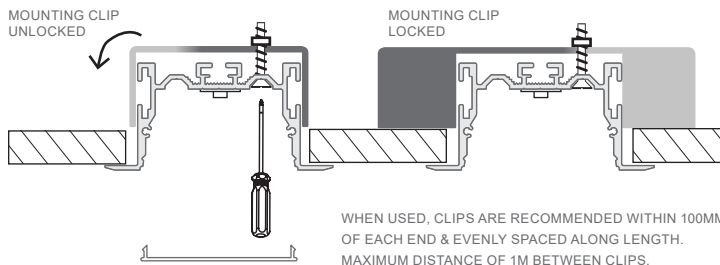
For best visual performance, LED ribbon up to a maximum of Pro 12 or equivalent is recommended for glare management.

INSTALLATION

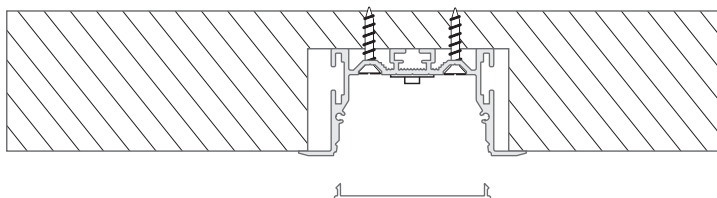
See installation guide for detailed installation instructions.

When recessed with mounting clips requires cut out of 55-65mm, suitable for up to 15mm ceiling.

MOUNTING CLIP INSTALLATION



SCREW-FIT INSTALLATION



DIMENSIONS

