

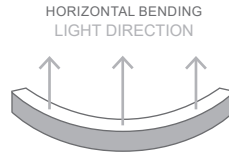
ENCAPSULATED LED RIBBON | LITE



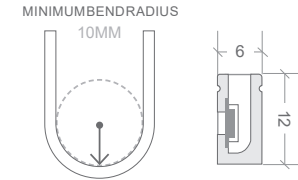
COLOUR	CODE	LUMENS
WARM WHITE 3000K	BL-LS-4300-30	≥180lm/m
NATURAL WHITE 4000K	BL-LS-4300-40	≥250lm/m
BLUE 455–460nm	BL-LS-4300-B	≥35lm/m

LED WATTS	7.2W/m
INPUT VOLTS	24V DC constant voltage
OPERATING TEMP.	-25°C ~ +60°C
MAX. RUN PER POWER FEED	15m using one feed 30m using two feeds
DIMENSIONS	W6 × H12mm (W8mm for connectors)
CUTTING LENGTH	50mm
MINIMUM BEND RADIUS	10mm
BEND DIRECTION	Horizontal bending
SOURCE LIFE	50,000 hours
WARRANTY	3 years
INGRESS PROTECTION	Protection established by use of IP66 connections
CONTROL	Dimmable by PWM signal

ENCAPSULATED LED RIBBON | LITE CAN BE CURVED AS SHOWN BELOW:



✗ DO NOT TWIST THE LIGHT OR BEND AGAINST THE LIGHT SURFACE

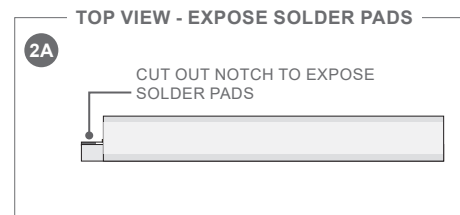
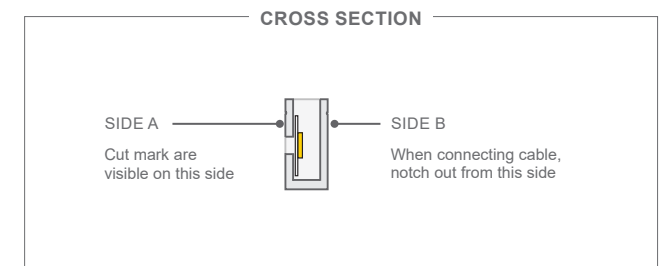
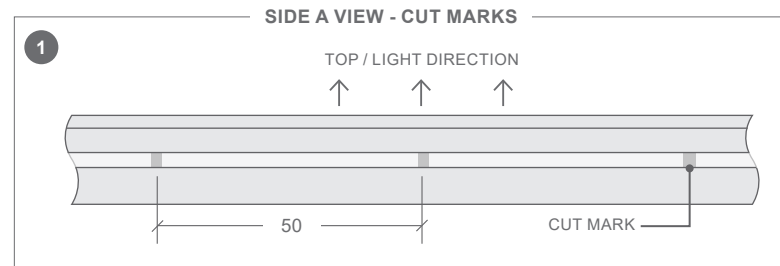


SAFETY NOTES

- Before making any cuts, installation, maintenance, or connection, be sure the mains power is disconnected.
- All connector joints must be connected correctly to achieve connector IP rating.
- Check the polarity of the connector before inserting the front connector and switching on the mains power.
- Cut and connect Encapsulated LED Ribbon correctly. Any incorrect operation can cause damage.
- Use a certified Bright Light 24V DC power supply.

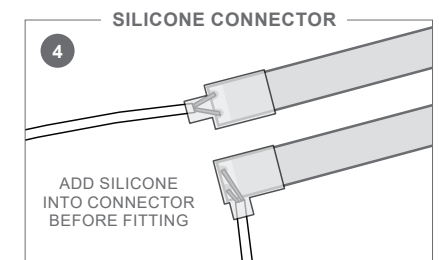
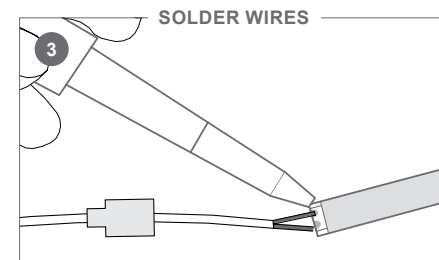
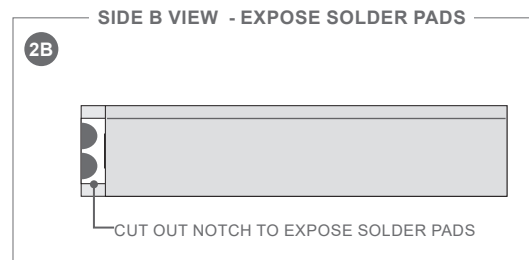
BRIGHT LIGHT RECOMMENDS CONNECTIONS ARE MADE IN-HOUSE

CUTTING RIBBON & CONNECTING BOOT CONNECTORS



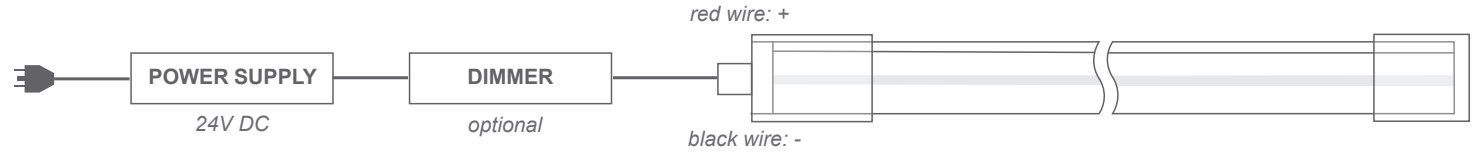
1. Cut Encapsulated LED Ribbon only at the cut lines shown on **Side A** of product.
2. **To fit a connector:** cut out a notch (approx 3 × 3mm) from **Side B** to expose the PCB solder pads. Take care not to cut or damage the PCB and LEDs in this step.

3. Cut and trim the cable to the appropriate length and feed through connector. Solder the wires onto the solder pads of the Encapsulated LED Ribbon PCB ensuring the correct +/- polarity.
4. Insert silicone into connector before fitting over connection. The silicone is required to complete the IP66 rating. *Failure to do this will result in warranty becoming void.*
5. **Shortening ribbon / fitting new end cap:** Cut Encapsulated LED Ribbon to length then fit end cap and silicone in place.



WIRING DIAGRAM

- To minimise voltage drop and ensure consistent light output, position the power supply near to the power feed end of the LED Ribbon, and keep the line as short as possible
- Ensure your maximum run per power feed adheres to the guidelines; 15m when using a single connector, or 30m when using both connectors
- Ensure to add 20% buffer when selecting a power supply

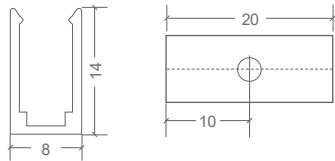
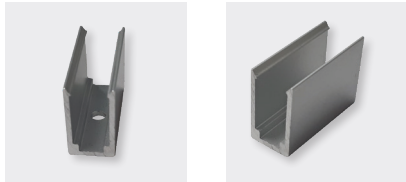


MOUNTING CLIPS

Mounting clips allow for the creation of unique Encapsulated LED Ribbon shapes and designs. Quantity of mounting clips required depends on length of product, desired shape and mounting surface angle.

ACCESSORY	CODE
MOUNTING CLIP 20MM	BL-LS-4315

HOLE DIMENSIONS Ø2.5mm



IP66 CONNECTION ACCESSORIES

Encapsulated LED Ribbon requires the soldering of cable onto PCB solder pads and the use of silicone connectors to ensure an IP66 protective seal.

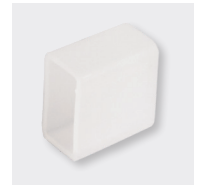
ACCESSORY	CODE
END FEED CONNECTOR IP66	BL-LS-4301
BOTTOM FEED CONNECTOR IP66	BL-LS-4302
END CAP IP66	BL-LS-4305
POWER FEED CABLE (1000MM)	BL-LS-4310



END FEED CONNECTOR



BOTTOM FEED CONNECTOR



END CAP

