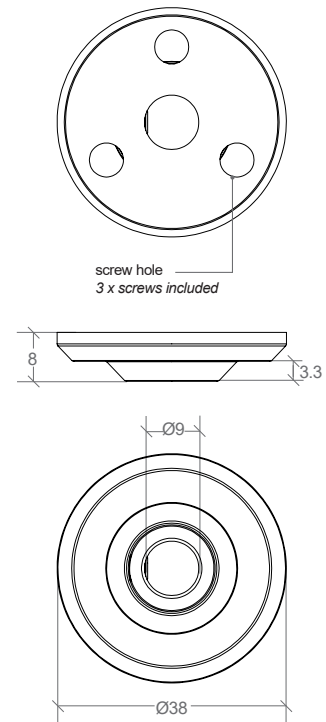
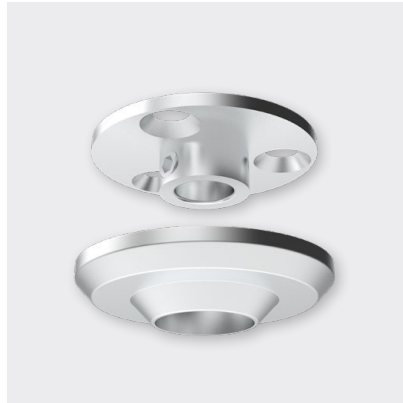


## CABLE BASE MINI 38MM



FINISH	CODE
ANODISED	BL-LP-S112A
BLACK	BL-LP-S112B
WHITE	BL-LP-S112W

## INSTALLATION

1. Select appropriate ceiling location for cable base - should be into suitable material and above luminaire where the power feed cable can connect to the LED driver.
2. Drill hole in ceiling for power feed cable.
3. Thread the power feed cable through face plate then base and ceiling hole. **Use the included bushing lamp snap for cables  $\leq \text{Ø}5.8\text{mm}$ .**
4. Measure required cable length, then tighten the cable locking pin (*with bushing lamp snap inserted from above if required*) to prevent excess cable from slipping.
5. Position and screw the base onto ceiling using the three mounting holes, ensuring the ceiling hole is aligned centrally.
6. The face plate has a prefixed magnet ring. Simply press up against base.

