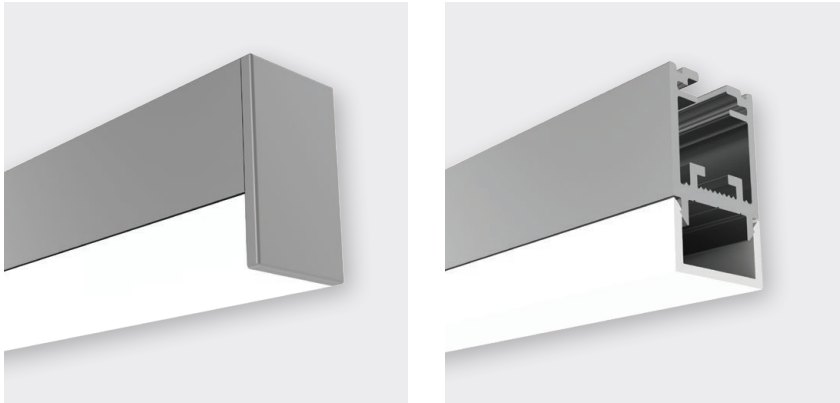




## BASELINE 07



### FEATURES

- W18.5mm × H31mm
- Rectangle frosted acrylic diffuser
- Anodised aluminium, black, or white powder-coat
- Suspend or surface mount
- Provides thermal management for LED ribbon up to a maximum of Pro 30 or equivalent
- For best visual performance LED ribbon up to a maximum of Pro 12 or equivalent is recommended for glare management.

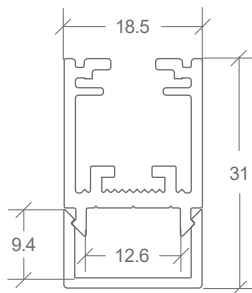
DIFFUSER	FINISH	CODE
OPAL	ANODISED	BL-LP-B07AO-XX
	BLACK	BL-LP-B07BO-XX
	WHITE	BL-LP-B07WO-XX

XX = (2M) 2 METRE or (4M) 4 METRE LENGTHS

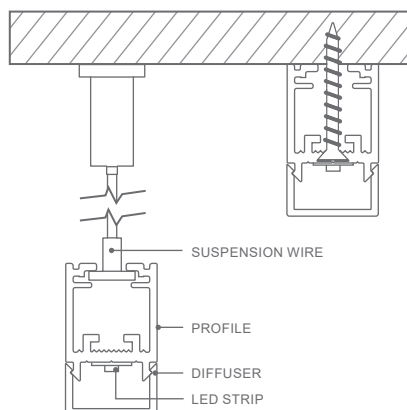
ACCESSORY	CODE
ALUMINIUM END CAP <i>W18.5 × H31 × D2MM</i>	BL-LP-B07X-EC
JOINER STRAIGHT	BL-LP-J101S
JOINER 90° CORNER	BL-LP-J102C
JOINER 120° CORNER	BL-LP-J121C
CABLE BASE SURFACE MOUNT	BL-LP-S104X
CABLE BASE RECESSED	BL-LP-S105X
CABLE BASE MINI 38MM	BL-LP-S112X
SUSPENSION WIRE WITH BASE	BL-LP-S106X

END CAPS SOLD INDIVIDUALLY  
X = (A) ANODISED, (B) BLACK, OR (W) WHITE

### DIMENSIONS



### INSTALLATION



BL-LP-S104X



BL-LP-S105X



BL-LP-S112X