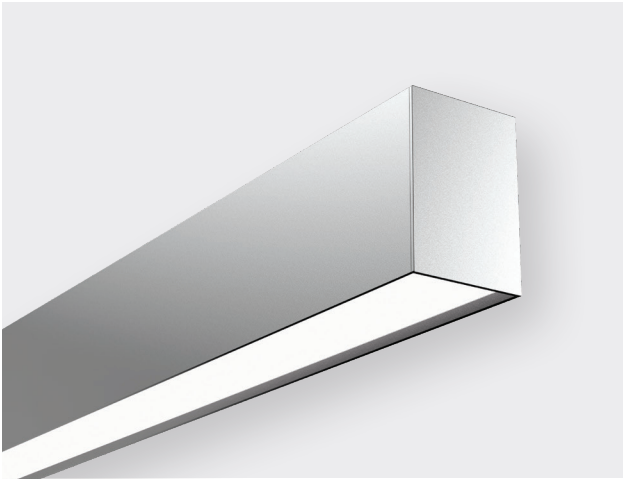


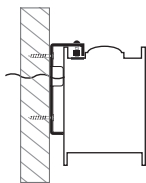
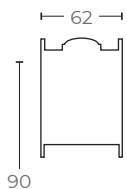
# ELEMENT

## ELEMENT 62 | WALL MOUNT | SPECIFICATIONS



### PHYSICAL

MODEL	ELEMENT 62
LIGHT DISTRIBUTION	Direct & indirect Direct only
HOUSING	NZ Made Aluminium
INGRESS PROTECTION	Indoor use only
FINISH	Metro Silver Pearl, Black, or Appliance White powder-coat <i>Custom-colour finishes available by request</i>
MOUNTING	Wall Mount via wall mount bracket
CABLE	1m clear flex <i>Custom lengths available by request</i>
WEIGHT	Minimum 2.4kg per linear metre Maximum 3.7kg per linear metre
OPERATING TEMP.	-10°C ~ +40°C
INGRESS PROTECTION	IP5X
WARRANTY	10 years

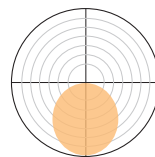


Wall Mounted

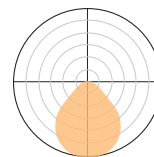
### LIGHT

LED BOARD	Constant current
LED COLOUR	3000K Warm White 4000K Natural White
CRI	90+
OPTICS	<b>Direct</b> Opal diffuser or Low Glare diffuser (UGR 19) <b>Indirect</b> Ceiling wash (standard)
LUMENS/M	1000–4000lm/m (Direct) 1500–3500lm/m (Indirect)
LIFETIME	>72,000H L80/B10
TM30	Reports available

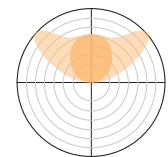
### LIGHT DISTRIBUTION



OPAL DIFFUSER



LOW GLARE DIFFUSER



CLEAR LENS (INDIRECT)

### POWER & CONTROL

INPUT	220–240V AC 50/60Hz
CONTROL	DALI, wireless control or fixed output

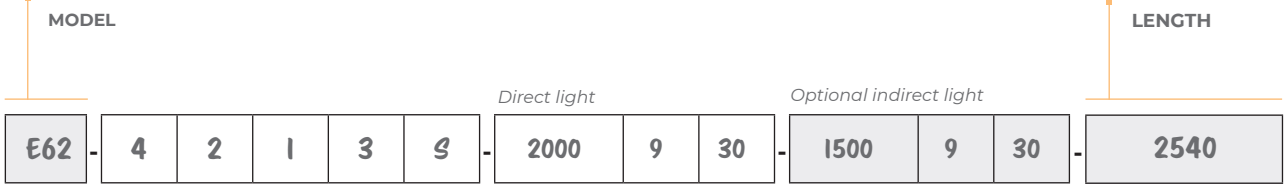
# ELEMENT

## ELEMENT 62 | WALL MOUNT | SPECIFICATION CODES

The coding guide below will provide a product code based on your desired lighting options.

**E62** ELEMENT 62. W62MM x H90MM

**MM**  
860MM\* - ∞  
Final length +/- 100mm.



### PHYSICAL PARAMETERS

MOUNT	LIGHT DISTRIBUTION	OPTIC	CONTROL	FINISH
1 Suspend	1 Direct	1 Opal	1 Fixed Output	S Silver
2 Ceiling Mount Std	2 Direct & Indirect	2 Low Glare**	2 DALI	B Black
3 Ceiling Mount Plug			3 Wireless Control	W White
4 Wall Mounted				C Custom
5 Recessed				

### DIRECT LIGHT

LUMENS/M	CRI	CCT
1000		
1500		30 3000K
2000	9 90+	
2500		
3000		40 4000K
3500		
4000		

### INDIRECT LIGHT

LUMENS/M	CRI	CCT
1500		
2000		30 3000K
2500	9 90+	
3000		
3500		40 4000K

### E62-4213S-2000930-1500930-2540

The example code above will create the luminaire:  
 Element 62, Wall Mount, Direct & Indirect, Opal diffuser, Wireless control, Silver finish, length 2450mm  
 Direct light: 2000lumens/m, CRI 90, 3000K.  
 Indirect light: 1500lumens/m, CRI 90, 3000K  
 Exact length will depend on board configuration and may differ by +/- 100mm

\* 860mm minimum for direct only fitting.  
 1140mm minimum for direct + indirect fitting (2000lm/m indirect)  
 \*\* UGR compliance up to 2000lm/m.