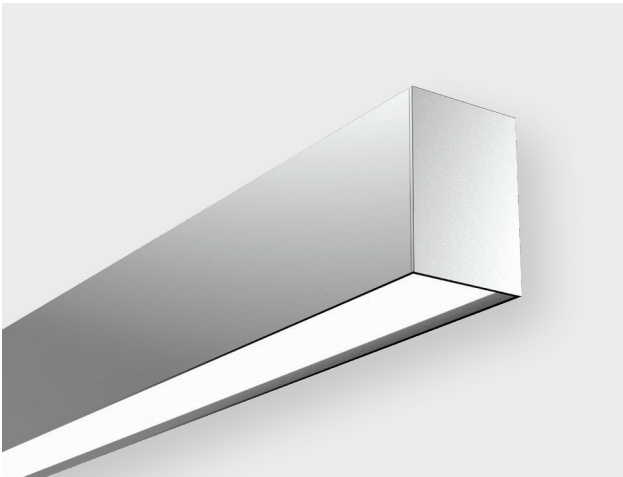


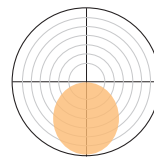
ELEMENT 62 | CEILING MOUNT | SPECIFICATIONS



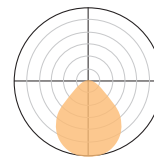
PHYSICAL	
MODEL	ELEMENT 62
LIGHT DISTRIBUTION	Direct only
HOUSING	NZ Made Aluminium
INGRESS PROTECTION	Indoor use only
FINISH	Metro Silver Pearl, Black, or Appliance White powder-coat <i>Custom-colour finishes available by request</i>
MOUNTING	Ceiling Mount via ceiling mount extrusion
CONNECTION	Standard 1m Cable Includes cable out the top of the fitting. Power Connector Built-in plug solution allowing a simple pre-install & electrical termination prior to luminaire fit-off. A good solution where ceiling access is limited.
WEIGHT	Minimum 2.4kg per linear metre Maximum 3.7kg per linear metre
OPERATING TEMP.	-10°C ~ +40°C
INGRESS PROTECTION	IP5X
WARRANTY	10 years

LIGHT	
LED BOARD	Constant current
LED COLOUR	3000K Warm White 4000K Natural White
CRI	90+
OPTICS	Direct Opal diffuser or Low Glare diffuser (UGR 19)
LUMENS/M	1000–4000lm/m
LIFETIME	>72,000H L80/B10
TM30	Reports available

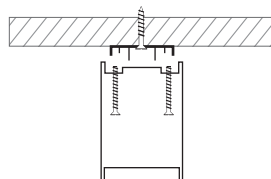
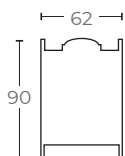
LIGHT DISTRIBUTION



OPAL DIFFUSER



LOW GLARE DIFFUSER



Ceiling Mounted

POWER & CONTROL

INPUT	220–240V AC 50/60Hz
CONTROL	DALI, wireless control or fixed output

ELEMENT

ELEMENT 62 | CEILING MOUNT | SPECIFICATION CODES

The coding guide below will provide a product code based on your desired lighting options.

E62 ELEMENT 62. W62MM × H90MM

MODEL

MM
860MM* – ∞
Final length +/- 100mm.

LENGTH

Direct light

E62 - **2** **1** **2** **2** **W** - **2000** **9** **40** - **4780**

PHYSICAL PARAMETERS					DIRECT LIGHT		
MOUNT	LIGHT DISTRIBUTION	OPTIC	CONTROL	FINISH	LUMENS/M	CRI	CCT
1 Suspend	1 Direct	1 Opal	1 Fixed Output	S Silver	1000		
2 Ceiling Mount Std	2 Direct & Indirect	2 Low Glare**	2 DALI	B Black	1500		30 3000K
3 Ceiling Mount Plug			3 Wireless Control	W White	2000	9 90+	
4 Wall Mounted				C Custom	2500		
5 Recessed					3000		
					3500		40 4000K
					4000		

E62-2122W-2000940-4780

The example code above will create the luminaire:

Element 62, Ceiling Mount Standard, Direct only, Low Glare diffuser, DALI control, White finish, 2000lumens/m, CRI 90, 4000K, 4780mm

Exact length will depend on board configuration and may differ by +/- 100mm

* 860mm minimum for direct only fitting.
** UGR compliance up to 2000lm/m.

