

D2 TOUCH PANEL | D SERIES



CODE

BL-PC-D2

INPUT VOLTS 12-24V DC

LOAD CURRENT 4A×2CH Max 8A

MAX OUTPUT POWER 12V DC - 96W  
24V DC - 182W

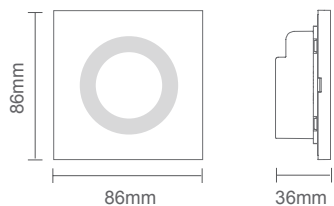
DIMENSIONS W86 x L86 x D36mm

OPERATING TEMP. -30°C ~ +55°C

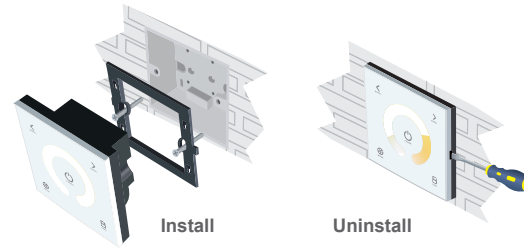
WEIGHT 208g

INGRESS PROTECTION Indoor use only

WARRANTY 5 years

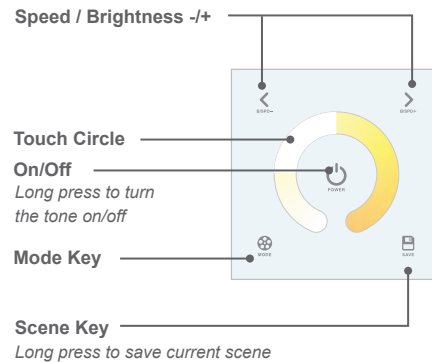


1. INSTALLATION INSTRUCTIONS

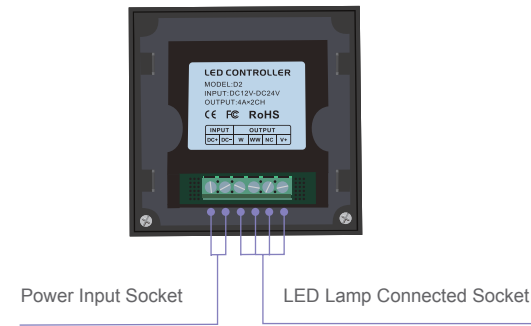


No wall flush box supplied/required. Units come with a mounting plate, simply screw it through the wall and cut out a hole in the centre

2. KEY FUNCTIONS

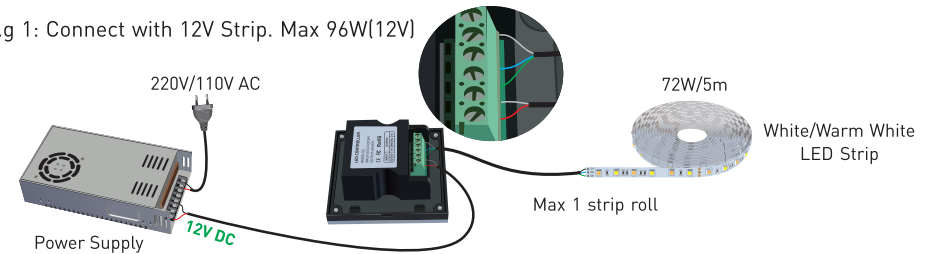


3. GREEN BLOCK



4. WIRING DIAGRAM

E.g 1: Connect with 12V Strip. Max 96W(12V)



E.g 2: Connect with 24V Strip. Max 192W(24V)

