

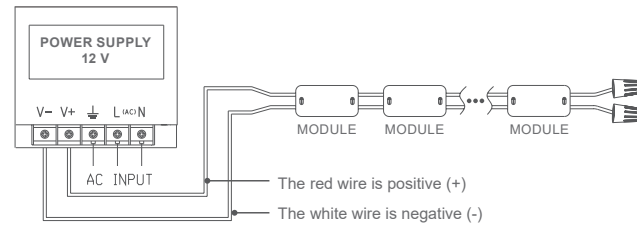
## 1 WATTS PER MODULE | IP65



COLOUR	CODE
COOL WHITE 6000K	BL-MOD-923-CW

LED WATTS	1W per module
INPUT VOLTS	12V DC constant voltage
INPUT AMPS	83mA per module
OPERATING TEMP.	-25°C ~ +60°C
MAX. CASCADE RUN PER POWER FEED	25 modules
LUMENS	160lm per module
BEAM ANGLE	160°
WARRANTY	3 years
DIMENSIONS	Module W16 × H7.5 × L79mm
CUTTING LENGTH	125mm cable between each module can be cut
INGRESS PROTECTION	IP65
MOUNTING	3M adhesive backing and provision for screw mounting
CONTROL	Dimmable by PWM signal

### CONNECTION DIAGRAMS

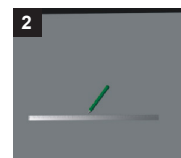


Ensure the correct +/- polarity between module and power supply.

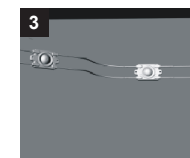
### INSTALLATION STEPS



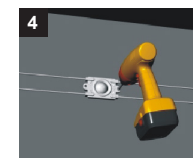
1 Clean the installation surface



2 Determine the installation position for modules and the required quantity. Make sure to install from the middle.



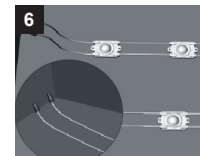
3 Peel off the double-sided backing tape, adjust to best position, then stick module on surface.



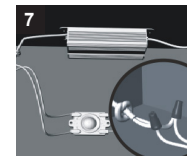
4 Secure module by screws.



5 Cut off the modules to the desired quantity and strip wires about 10mm. Note: Cut the wire in the middle between modules.



6 When the wire is exposed, screw in terminals and ensure waterproof seal



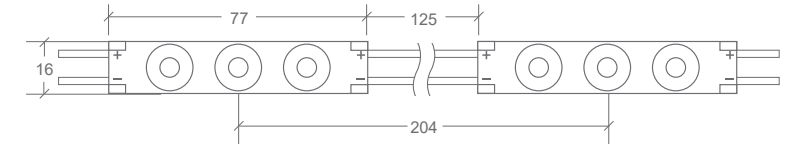
7 Connect the +/- and signal wire of the modules to the controller correctly. Ensure there is a waterproof seal.

### ILLUMINATION FIGURES

LIGHT BOX DEPTH	SPACING BETWEEN EACH UNIT (MM)	DENSITY (PCS / M <sup>2</sup> )	SURFACE ILLUMINATION RANGE (LUX)
A=40mm	B=90	123	10000-12000
A=60mm	B=140	56	5800-6800
A=80mm	B=160	43	3700-4500
A=100mm	B=190	28	2800-3000
A=120mm	B=200	23	2200-2600

Figures tested using acrylic white board with 3mm depth and 54.4% light transmittance. Illumination data is the minimum value tested on even surface. Average values are for reference only.

### DIMENSIONS



Maximum of 25 modules cascade per power feed.

Cascade can be increased to 50 modules if powered from both ends.

### ATTENTION

- The product shall be installed and serviced by a professional electrician.
- Do not disassemble or modify the modules; do not touch LED surface with sharp tools
- Do not install while the electricity cables are live
- During installation please ensure that all exposed wires and connections are sealed with a suitable silicone and/or heat shrink to ensure water tightness
- Use 18AWG or larger wires to avoid over-current which may cause overheating
- Do not use with a dimmer
- Do not exceed 50pcs modules in one string
- The power cable between the module and the power supply should be no longer than 10 metres
- This product is applicable to the inside of light box or signage lighting, do not use directly outdoors

