

## 12W/M COB LED RIBBON | IP66 EXTERIOR

COLOUR	CODE	LUMENS
WARM WHITE 3000K	BL-LS-COB12-WW-IP66	1036lm/m
NATURAL WHITE 4000K	BL-LS-COB12-NW-IP66	1145lm/m

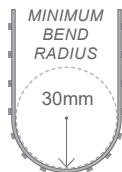
COLOUR VARIANCE +/- 200K  
ELECTRICAL & OPTICAL DATA VARIANCE +/- 10%  
SOLD BY THE METRE

LED WATTS	12W/m
INPUT VOLTS	24V DC constant voltage
OPERATING TEMP.	-25°C ~ +50°C
MAX. RUN PER POWER FEED	5 metres
CUTTING LENGTH	15.62mm
SOURCE LIFE	50,000 hours
WARRANTY	3 years
MOUNTING	3M adhesive backing <i>A Bright Light approved aluminium profile is required for thermal management and UV / Sunlight protection</i>
INGRESS PROTECTION	IP66 - General exterior & interior use Encased in silicone sleeve. Protection established by use of silicone connections (W12.5 x H7mm) <i>Not suitable for submerged applications</i>
CONTROL	Dimmable by PWM signal

**ALWAYS UNCOIL BEFORE USE**

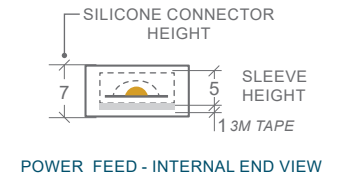
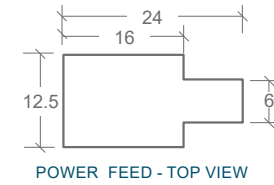
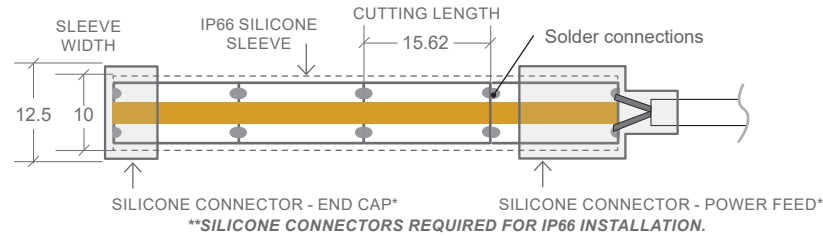


Do not twist the light or bend against the light surface



MINIMUM BEND RADIUS

30mm



### SILICONE CONNECTORS

CONNECTOR SILICONE - POWER FEED CONNECTOR (REQUIRES SOLDERING & SILICONE)	BL-LS-CS10-IP66-PF
CONNECTOR SILICONE - END CAP (REQUIRES SILICONE)	BL-LS-CS10-IP66-EC

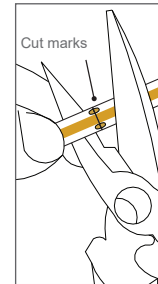
### CODE



### INSTALLATION FOR SILICONE CONNECTORS

#### CUT EXACTLY ON LINE

COB ribbon needs to be cut **exactly** on the cut line between the solder pads. The LED's are extremely close together and deviation from this line may result in blue light being visible from an LED being partially exposed at the end. If this occurs, either recut at the next cut line or add a touch of dark light-blocking silicone to prevent light bleed at the edge.

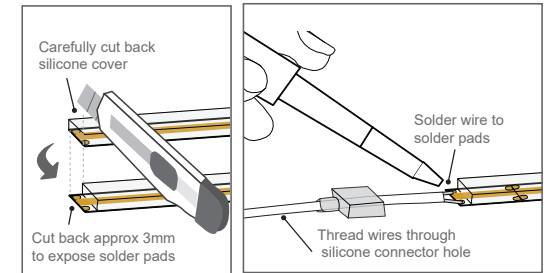


**To ensure IP66 rating:** All open LED COB ribbon ends need to be covered with a power connector or end cap. Do not leave any end exposed.

#### ADD A POWER CABLE CONNECTION

Use craft knife to carefully notch cut the silicone cover from LED ribbon strip solder pads (about 3mm). **Avoid cutting pcb or LED phosphor.**

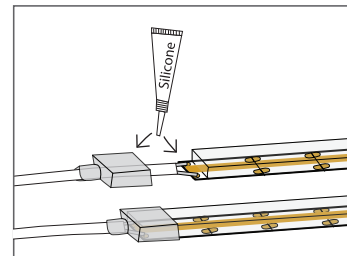
Cut and trim the wires to the appropriate length required. Thread wires through Silicone connector power feed hole and solder wire to the soldering pads at the end of the LED ribbon strip. Ensure the correct +/- polarity to form a continuous electrical circuit.



#### SEAL POWER CONNECTOR

Peel off 15mm of the 3M tape from back of the ribbon strip.

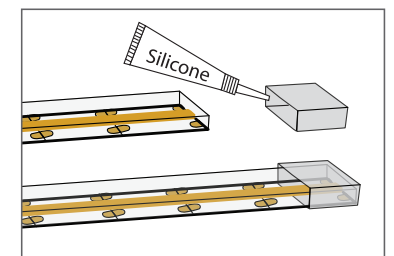
Insert liquid silicone to completely cover strip solder connection point (to at least 3mm depth). Then fill the silicone power feed connector with liquid silicone before fitting it over COB sleeve end to ensure IP66 rating.



#### SEAL END CAP

Insert liquid silicone into end cap and fit over end of ribbon. Allow silicone to set before use.

End cap required for IP66 rating.



Please note drawings are an installation guide only. Each LED Ribbon Strip application may have variable factors. Cable size may need to be specified to limit the voltage drop throughout the circuit.