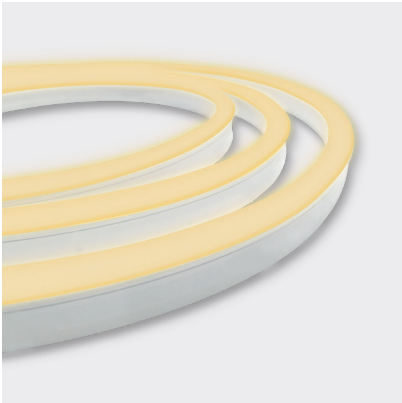


EX-STOCK
PRODUCT

NEON CLASSIC | TUNEABLE WHITE | PVC



COLOUR	CODE	COLOUR	LUMENS	CRI
2500 - 5000K TUNEABLE	BL-LS-4900	2460K ±120K	≥130lm/m	≥80
		5000K ±285K	≥130lm/m	

ELECTRICAL & OPTICAL DATA VARIANCE +/- 10%
SOLD BY THE METRE
IES FILES AVAILABLE

With the introduction of our indent range of Silicone encapsulated Neon LED ribbon, our local, end of line PVC stock is available with 3 year warranty using local connectors.

Neon Classic is domed top model of W16.5 × H29mm (W11.5mm at the base).

Tuneable White allows lighting to be adjusted to suit the environment and time of day. Warmer temperatures create a cozy feel that is perfect for evenings, while cooler temperatures simulate day light, creating a more alert feel.

Stock quantities vary - Talk to our team.

For more options consider our indent silicone Neon range - lead times apply.

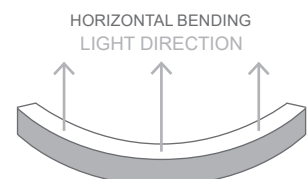
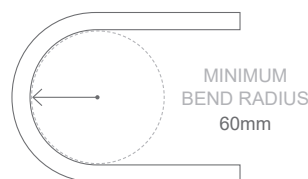
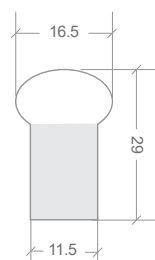
APPLICATIONS

- Ideal for applications where colour temperature adjustment is required
- Signage & cove lighting
- Architectural features
- Exterior or interior installations

FEATURES

- A perfect replacement for traditional glass neon tube
- UV & flame resistant
- Suitable for use around salt or chlorinated water

LED WATTS	12W/m	MINIMUM BEND RADIUS	60mm
INPUT VOLTS	24V DC constant voltage	BEND DIRECTION	Horizontal bending
OPERATING TEMP.	-20°C ~ +45°C	DIMENSIONS	W16.5 × H29mm (W11.5mm at the base)
MAX. RUN PER POWER FEED	10m using one feed 20m using two feeds (01 & 02 connectors)	INGRESS PROTECTION	Up to IP67 Protection established by use of connection type SEE PAGE 2.
BEAM ANGLE	180°	CUTTING LENGTH	83.3mm
SOURCE LIFE	50,000 hours	HOUSING	UV & flame resistant white PVC
WARRANTY	3 years	MOUNTING	Profile / clips available SEE PAGE 3.
		CONTROL	Requires 2-channel controller



NEON CLASSIC | TUNEABLE WHITE | PVC | CONNECTIONS

Neon products are IP rated based on the fitted connections (power feed / end caps).

Can be fitted on-site or pre-fitted by Bright Light.

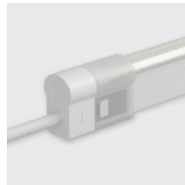
SLEEVE CONNECTIONS | IP40



TOP END FEED CONNECTOR SUPPLIED AS 1M CABLE

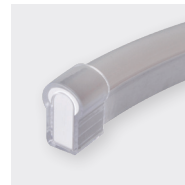
INSTALLATION WITH DOUBLE POWER FEED:
FEED 01 + FEED 02

CONNECTOR TOLERANCE +/-0.5MM



TOP END FEED

01 02



END CAP



INLINE
CONNECTOR



300MM FLEXIBLE
CONNECTOR

TUNEABLE WHITE

BL-LS-4905

BL-LS-4906

BL-LS-4502

BL-LS-4904

BL-LS-4907

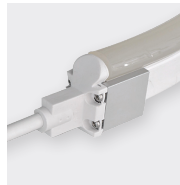
SCREW CONNECTIONS | IP65



TOP END FEED CONNECTOR SUPPLIED AS 1M CABLE

INSTALLATION WITH DOUBLE POWER FEED:
FEED 01 + FEED 02

CONNECTOR TOLERANCE +/-0.5MM



TOP END FEED

01 02



END CAP



300MM FLEXIBLE
CONNECTOR

TUNEABLE WHITE

BL-LS-4901

BL-LS-4902

BL-LS-4501

BL-LS-4903

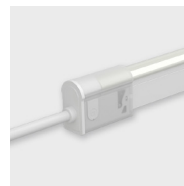
SNAP CONNECTIONS | IP67



TOP END FEED CONNECTOR SUPPLIED AS 1M CABLE

INSTALLATION WITH DOUBLE POWER FEED:
FEED 01 + FEED 02

MUST BE FITTED CORRECTLY FOR IP RATING



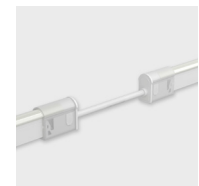
TOP END FEED

01 02



END CAP

01 02



300MM FLEXIBLE
CONNECTOR

TUNEABLE WHITE

BL-LS-4517

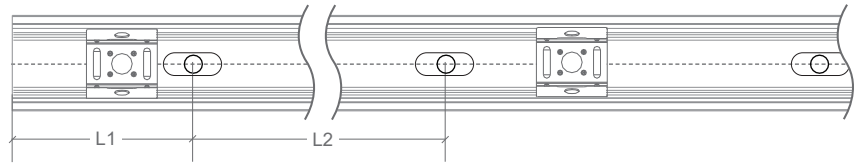
BL-LS-4518

BL-LS-4526

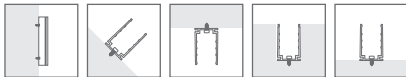
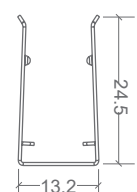
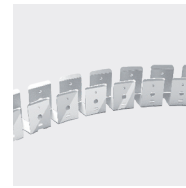
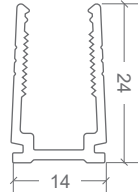
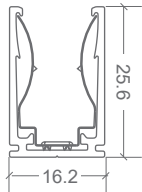
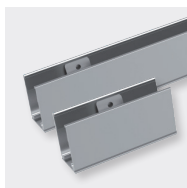
BL-LS-4527

BL-LS-4519

NEON CLASSIC | MOUNTING ACCESSORIES

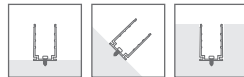


CODE	ACCESSORY	L1	L2	HOLE DIMENSIONS	HOLE NUMBER	CLIP NUMBER
BL-LS-4003	SELF-LOCKING ALUMINIUM PROFILE 2M	100mm	200mm	4 × 10mm	10	9
BL-LS-4004	SELF-LOCKING ALUMINIUM MOUNTING CLIP 35MM	5mm	25mm	4 × 10mm	2	1
BL-LS-4005	PLASTIC PROFILE 2M	100mm	200mm	Ø3.5mm	10	-
BL-LS-4006	PLASTIC PROFILE 1M	100mm	200mm	Ø3.5mm	5	-
BL-LS-4028	BENDABLE STAINLESS STEEL PROFILE 890MM MULTIPLE FIXING LOCATIONS	-	-	-	-	-

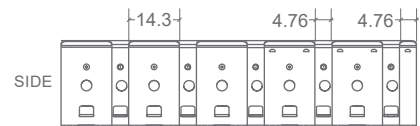


**SELF-LOCKING ALUMINIUM
PROFILE 2M / MOUNTING CLIP**

Not recommend for underwater use



PLASTIC PROFILE



**BENDABLE STAINLESS STEEL
PROFILE 890MM**