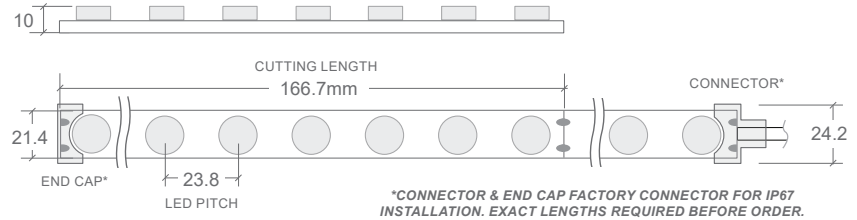
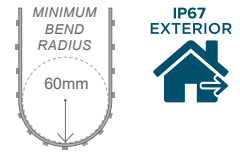




15W 24V WALL WASHER RIBBON | IP67



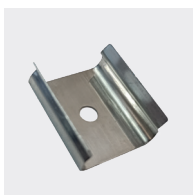
COLOUR	CODE	INGRESS PROTECTION	LUMENS	EFFICACY
EXTRA WARM WHITE 2700K	BL-LS-1200-27-IP67	IP67 connections are fitted at factory during the production process and can not be altered once produced. Lead times apply. Not suitable for submerged applications	1272lm/m	84lm/W
WARM WHITE 3000K	BL-LS-1200-30-IP67		1314lm/m	87lm/W
NATURAL WHITE 4000K	BL-LS-1200-40-IP67		1360lm/m	90lm/W

COLOUR VARIANCE +/- 200K. ELECTRICAL & OPTICAL DATA VARIANCE +/- 10%. SOLD BY THE METRE. AVAILABLE BY INDENT ORDER.

LED WATTS	15W/m	CRI	≥90	DIMENSIONS	W21.4 × H10mm (W24.2 × H12mm with connectors)
INPUT VOLTS	24V DC constant voltage	BEAM ANGLE	35°	MOUNTING	Aluminium Clips BL-LS-1200-MC (sold separately)
INPUT CURRENT	0.625A/m	SOURCE LIFE	50,000 hours	CUTTING LENGTH	166.7mm
OPERATING TEMP.	-25°C ~ +45°C	WARRANTY	3 years	CONTROL	Dimmable by PWM signal
MAX. RUN PER POWER FEED	5 metres			PROFILE	Suitable for Highline 01 / 02 / 03 / 04.

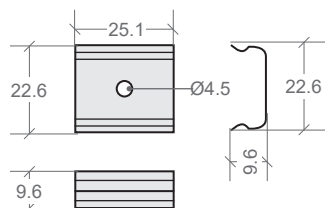
IP65 version available from local stock.
Connectors can be fitted by Bright Light or on-site

MOUNTING CLIP ACCESSORY



BL-LS-1200-MC

Minimum 4 clips per metre recommended



Screw-fix through central hole