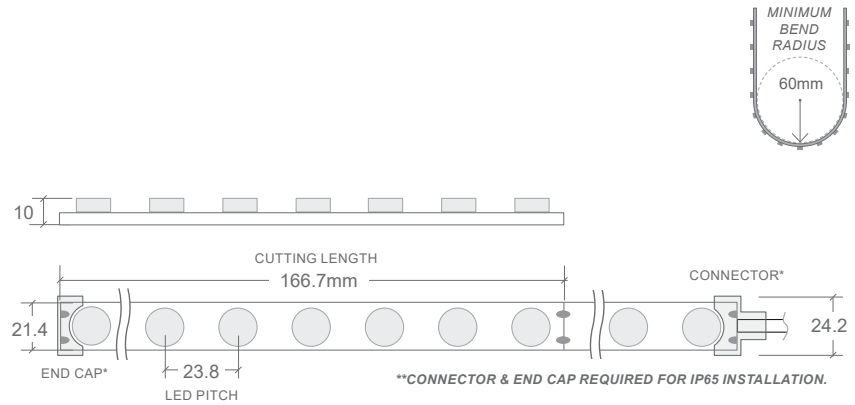


## 15W 24V WALL WASHER RIBBON | IP65



COLOUR	CODE	INGRESS PROTECTION	LUMENS	EFFICACY
EXTRA WARM WHITE 2700K	BL-LS-1200-27-IP65	IP65 - General interior use. Connector & end cap required for IP rating. With the appropriate protection, this product can also be used in some outdoor applications.	1272lm/m	84lm/W
WARM WHITE 3000K	BL-LS-1200-30-IP65		1314lm/m	87lm/W
NATURAL WHITE 4000K	BL-LS-1200-40-IP65		1360lm/m	90lm/W

COLOUR VARIANCE +/- 200K  
ELECTRICAL & OPTICAL DATA VARIANCE +/- 10%  
SOLD BY THE METRE

LED WATTS	15W/m	CRI	≥90	DIMENSIONS	W21.4 × H10mm (W24.2 × H12mm with connectors)
INPUT VOLTS	24V DC constant voltage	BEAM ANGLE	35°	MOUNTING	Aluminium Clips (sold separately) L25.1 × W22.6 × H9.6mm
INPUT CURRENT	0.625A/m	SOURCE LIFE	50,000 hours	CUTTING LENGTH	166.7mm
OPERATING TEMP.	-25°C ~ +45°C	WARRANTY	3 years	CONTROL	Dimmable by PWM signal
MAX. RUN PER POWER FEED	5 metres	PROFILE			Suitable for Highline 01 / 02 / 03 / 04.

**IP67 version available via indent order.**  
**Connectors fitted at factory during production process.**

ACCESSORIES	CODE
WALL WASHER RIBBON POWER CONNECTOR W23.3 × L26 × H8.3MM	BL-LS-1200-PF
WALL WASHER RIBBON END CAP W24.2 × L13.4 × H8.3MM	BL-LS-1200-EC
MOUNTING CLIP FOR WALL WASHER LED RIBBON MINIMUM 4 CLIPS RECOMMENDED PER METRE	BL-LS-1200-MC

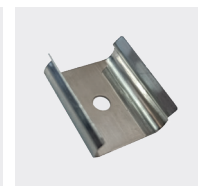
CONNECTOR & END CAP WITH SILICONE ADDITION REQUIRED FOR IP65 PROTECTION.



BL-LS-1200-PF



BL-LS-1200-EC



BL-LS-1200-MC