



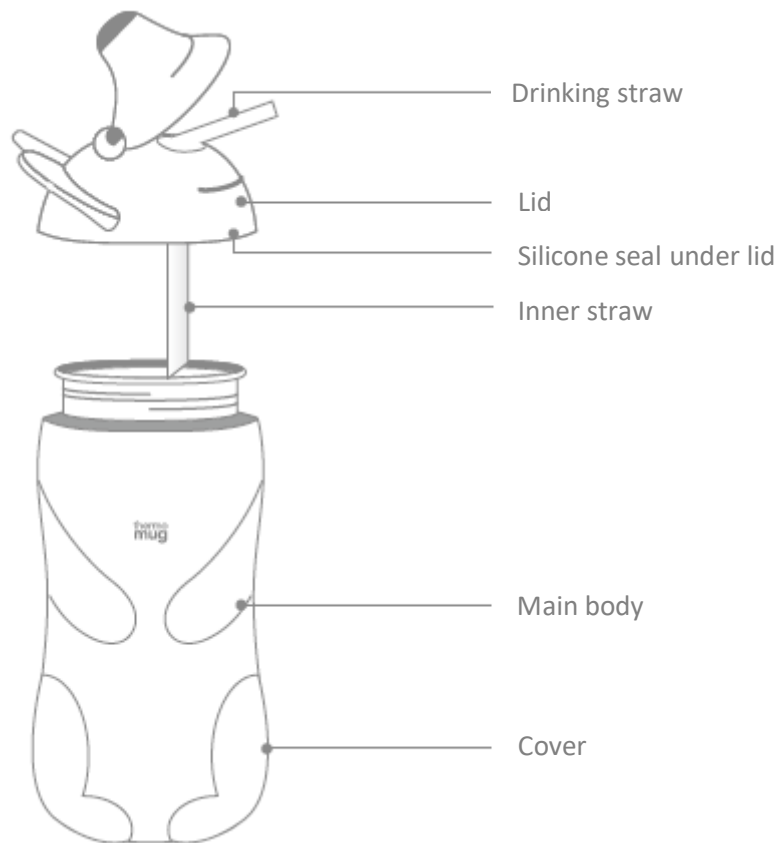
Instruction manual (translated from Japanese by Majime Life with consent from thermo mug)

**Model:** AB20-38

**Name:** Animal Bottle Bear

**Volume:** 0.38 L

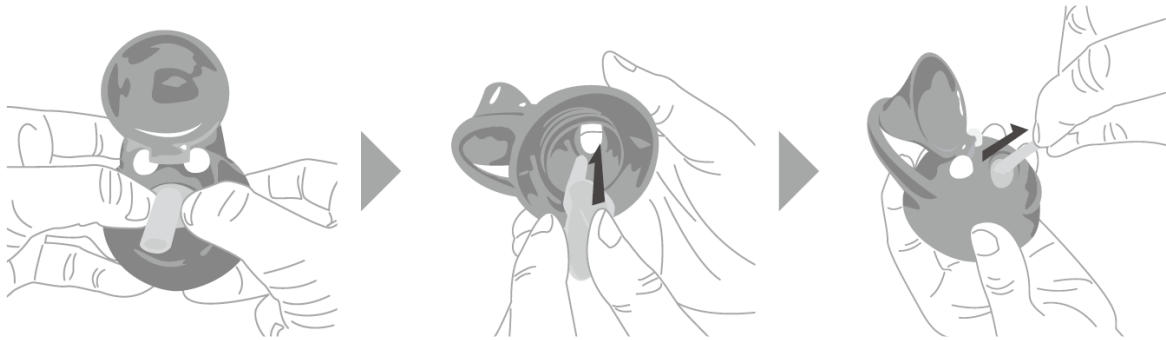
Designed by thermo mug in Japan. Made in China.



## Maintenance

How to remove and install the drinking straw

1. To remove, push the base of the drinking straw on both sides inwards as shown in the diagram.
2. To install, insert the drinking straw into the underside of the lid.
3. Pull the tip of the straw outwards while pushing from inside, so that the base of the drinking straw fits securely into place.



Before use:

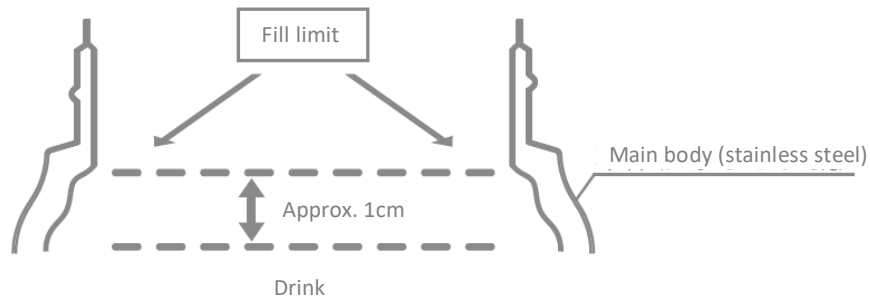
- Wash the bottle and lid in warm water mixed with mild detergent before use. If smell persists, wash in warm water mixed with cooking vinegar.
- Make sure all silicone seals are present in the lids and caps before use, and that they are fitted properly. Leaks can occur if seals are not present or fitted incorrectly.
- Do not soak in hot water

After use:

- Always remove the drinking and inner straws and silicone seal under the lid for washing after use. Make sure to dry thoroughly after wash and prior to use.

## Warning

- This water bottle has been designed for children over 6 years old in mind.
- Adult supervision recommended for children under 6 years old.
- Do not fill with very hot drinks as it may lead to burns or harm.
- Do not hang over neck with the strap attachment while playing as it may lead to suffocation.
- Do not microwave. Do not wash in dishwasher or dry in a dish dryer.



- Fill to approximately 1cm of the fill limit line. Overfilling the bottle will lead to spillage when closing the lid, or leakage during use.

### Parts information

Part	Material	Higher temperature limit	Lower temperature limit
Lid	Polypropylene and ABS Resin	80°C	-30°C
Drinking straw and lid seal	Silicone rubber	80°C	-30°C
Inner straw	Polyethylene	80°C	-30°C
Main body	Stainless steel		
Cover case	Acryl		

### Insulation properties

The table indicates the temperature of water inside the bottle after 1 or 2 hours, when either water at  $4^{\circ}\text{C} \pm 1^{\circ}\text{C}$  is filled, bottle is capped and lid shut, and left at a room temperature of  $20^{\circ}\text{C} \pm 2^{\circ}\text{C}$ .

Time	Starting temp $4^{\circ}\text{C} \pm 1^{\circ}\text{C}$
Temp after 1 hour	Below $12^{\circ}\text{C}$
Temp after 2 hours	Below $16^{\circ}\text{C}$

### Usage caution

- Bottle is not 100% leak proof.
- Fill approximately 1cm under the fill limit line.
- Store upright in your bag to minimize any risk of leakage/spillage.
- The drinking straw and silicone seal will deteriorate over time. Check the condition of these parts prior to use. If deteriorated, refrain from using as it could be mistakenly ingested.
- Avoid licking the coating of the bottle.
- Do not bite the drinking straw. Check if the drinking straw has been bitten off.
- Condensation may develop on the outer surface if cold drinks are filled.
- The cover case is not water resistant and does not have any insulation properties.
- Do not place in direct sunlight for long periods of time as the cover case may discolour or fade in colour.
- The cover case may result in colour fading, discolouration or colour transfer due to water, sweat or chaffing with another surface.

- A wet cloth can be used to wipe off any dirt or stains from the cover case.
- If the cover case is wet, mold may develop, or colours may fade. Please dry as soon as possible.
- Do not place next to an open flame. Heat may transfer to the bottle, which may result in burns.
- Do not fill with boiling liquid or very high temperature drinks as it may cause deformation or damage to the bottle, or burns.
- Make sure to firmly tighten the lid on the body. Make sure the silicone seal is in place before using. Loosely fitted lid may result in leakage.
- There is a risk of cracks or damage if the bottle is dropped or exposed to a hard shock. If there is any damage due to this, stop using the bottle immediately.
- There is risk of scratching or denting if the bottle makes hard contact or dropped on a hard object or surface.
- Do not store in the freezer as there is a risk of damage.
- Do not fill with anything other than drinks for human consumption.
- Consume your drink as quick as possible. If left for too long, there could be a risk of drink poisoning due to spoilage, bottle rusting, and discolouration. If there is a drink spoilage, gases could be released leading to the lid popping off due to high pressure or breaking into many pieces.
- Make sure to consume milk or dairy, or fruit drinks as quickly as possible, as these can lead to gases being released when spoilt.
- Avoid filling with liquids that contain food pieces, such as soups, teas with leaves or fruit juices with flesh.
- Do not fill with dry ice, carbonated drinks or alcohol.
- There is risk of scratching if hard brushes, scrubbers, or detergents with microparticles are used during washing.
- Do not fill with any organic solvents such as thinners or benzene.
- Do not use bleach or other chlorine products.
- Do not soak in water for long periods when washing.
- Please follow the maintenance steps after usage.