

Simple Serums

effective + straightforward

These serums were designed to address the current market demands for simple and effective serums that can be layered with other CLAMAR skincare items, or your end-consumer's current skin-care regimen

Toner Essence

(for dull and patchy skin) – A lightweight essence, packed with 8 fruit extracts and alpha hydroxy acids. Pat gently onto skin post-cleanse and pre-moisturizer/oils. Combats the visible signs of dullness and scaliness.



Step 1: Choose your formula
Step 2: Choose your component
Step 3: Supply Your artwork

CLAMAR cosmetics inc.

Niacinamide 5% Serum + Matrixyl Synthe 6

(for dull and patchy skin) – A lightweight essence, packed with 8 fruit extracts and alpha hydroxy acids. Pat gently onto skin post-cleanse and pre-moisturizer/oils. Combats the visible signs of dullness and scaliness.



Hyaluronic Acid + B5 (for hydration and moisture)

(for dull and patchy skin) – A lightweight essence, packed with 8 fruit extracts and alpha hydroxy acids. Pat gently onto skin post-cleanse and pre-moisturizer/oils. Combats the visible signs of dullness and scaliness.

Vitamin C

A brightening Vitamin C Serum + Kakadu Plum Extract at active levels, which aids in Free radical scavenger due to high vitamin C and polyphenol contents.



AM Protection and Repair Serum with Matrixyl 3000

A super-charged Day-time serum to help protect and repair from the effects of Blue Light pollution. Matrixyl 3000 is a tried and true anti-wrinkle and repair complex which helps to re-build the skin by stimulating the skin's collagen repair mechanisms which improve overall skin elasticity, firmness, and texture.

Essentials Collection

Step 1: Choose your formula
Step 2: Choose your component
Step 3: Supply Your artwork

CLAMAR
cosmetics inc.

fundamentals in self-care

High penetration product forms like creams, lotions and cleansers for daily use. Fortified with effective and well-accepted active ingredients

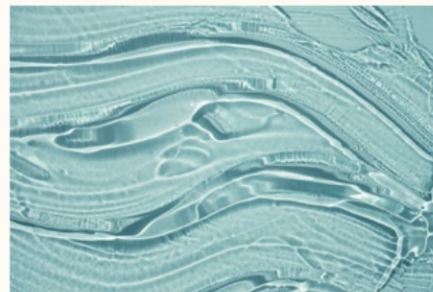
Essential Face Moisturizer

(with Niacinamide + HA + Squalane - A high penetrative moisturizing emulsion made with Hyaluronic acid, niacinamide, squalane and allantoin.



Jelly-Jam Mask

- A K-Beauty inspired gelly mask. Easy application and easy rinse off! Contains fruit acids for re-surfacing, arnica for de-puffing, willowherb and elderberry for nourishment, and aloe vera oil for calming tired congested skin.



Creamy Face Wash

Soothing and Cleansing - A gentle, creamy face wash, infused with extracts from Seabuckthorn, Green Tea, Calendula, Chamomile and Aloe Vera. SLS and harsh soap free

Essential Eye Cream (NEW!)

(Fight the appearance of fatigue with firming and brightening effects. Peptide complex, lingonberry stem-cells, chicory root and squalane.

Smoothie Hand-Cream

- plumping with peptides - A rich, non-greasy formulation fortified with hyaluronic acid, panthenol and peptides for preventative care. Shea butter helps with nourishment and soothing properties.

Light All Over Lotion

- The most versatile lotion for head to toe usage. Botanical oils: jojoba, grapeseed, coconut and sunflower help with nourishment. Creamy butters of cupuacu and shea aid with soothing and moisturizing properties.

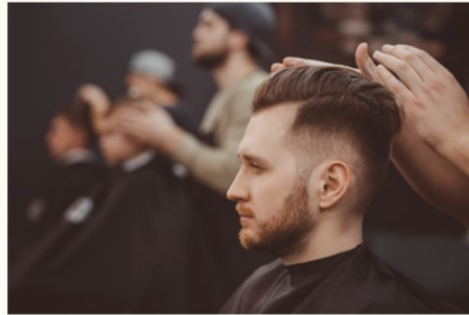
Gentlemen's Collection

**elevated
grooming
needs
formulated for
men**

The Brushless Shave Cream

A unique brushless formulation which creates a comfortable cushion for shaving. Fortified with Canadian Willowherb for moisture and soothing properties.

Step 1 : Choose your formula
Step 2: Choose your component
Step 3: Supply Your artwork



The Aftershave Balm

A light emulsion which leaves a non-greasy finish for after-shave use. Contains jojoba, grapeseed, coconut and sunflower help with nourishment. Creamy butters of cupuacu and shea aid with soothing and moisturizing properties.

The Medium Hold Pomade

For more flexible styles, this medium hold pomade is water-based, versatile and easy rinse-off. Contains bamboo extract for nourishment and dries down with a demi-matte finish.

The Texture Powder

A game changing technology! This unique powder to cream creates fullness, texture and hold in all hair types. Creates body for thinning hair. Pair with a pomade!



The Gravity Hair Paste

Ultimate pliability, this strong hold pomade helps to create textured styles. Contains bamboo extract for nourishment and dries down with a matte finish.

Standard Component Options

suitable for:
creams + gels:



2oz Frosted Glass with White
Lined Smooth Cap

suitable for:
serums + liquids



1oz and 2oz Frosted Glass with Dropper



2oz Amber PET with Smooth
Lined Cap



2oz and 4oz PET Clear Bottle with
Natural Flip Cap

Discover the most flexible Private Label program in the industry

Q: How does your private label program work?

A: We have the most flexible private label program in the industry with the lowest possible MOQs. Our customers have the option to choose our standard containers OR to supply their own chosen containers even at low order quantities

Q: What is the MOQ (minimum order qty)?

A: For our private label products, our MOQ is 250pc. Modified or customized products may be subject to a higher MOQ

Q: How can I customize my product and differentiate myself from others who also purchase your private label products?

A: The sky's the limit! Customers have the option to supply their own containers, labels, cartons and even add on any additional assembly services that they need* (extra charges may apply)
For those who would like to choose Glamar's standard containers, customers will provide their own artwork on either a solid label, or clear labels.

Q: Can I customize the standard formulations?

A: Yes! Please contact us for details

Q: I need a fully customized product. Can Glamar help?

A: Yes! Please contact us for details

Q: What other products can you private label?

A: Glamar has thousands of in-house formulations for colour cosmetics, skin care, body care, pet care and hair care products. We may have standard formulations, please contact us with your inquiries!