

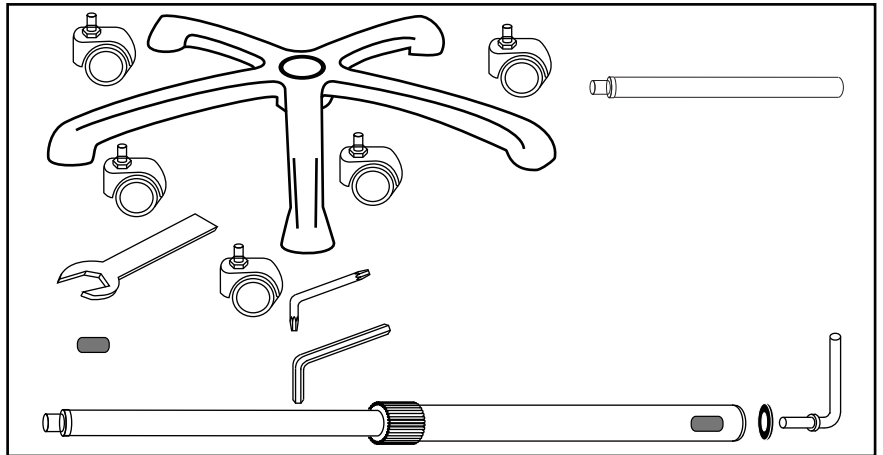


Heavy Duty Mobile Stand & Connecting Pole Add-on

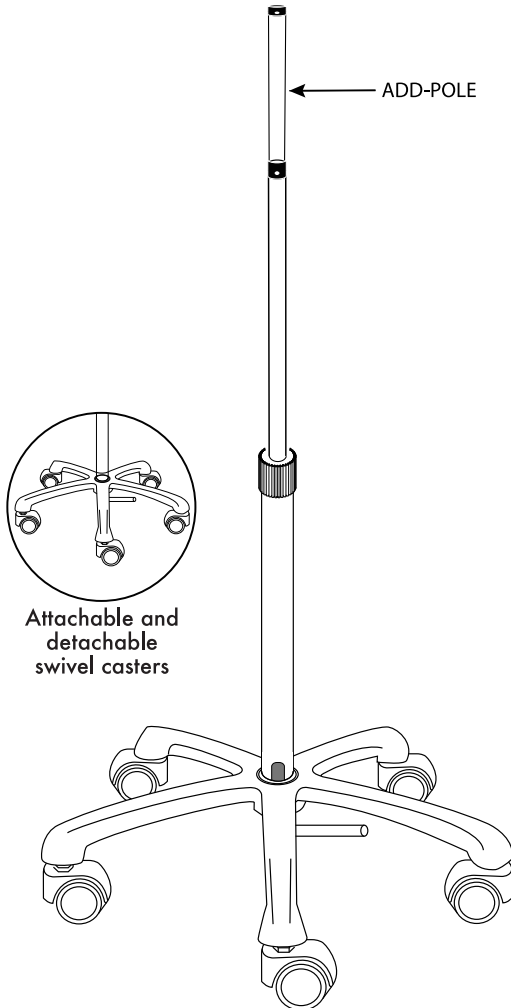
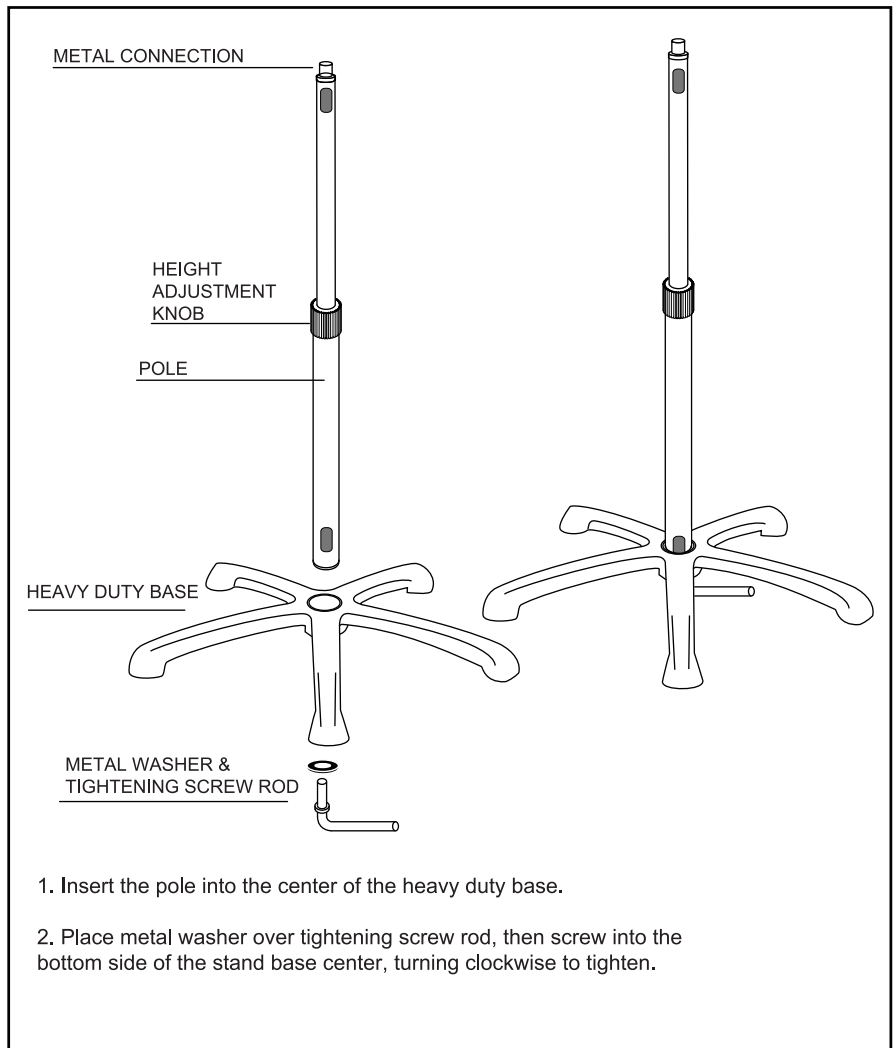
INSTRUCTION MANUAL

ADD-HFS & ADD-POLE

Package Contents:



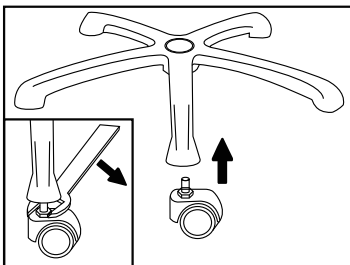
Stand Assembly:



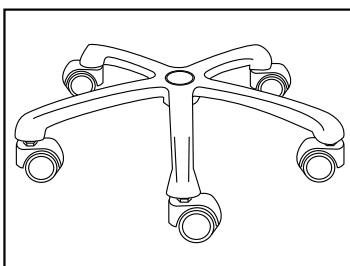
Attachable and detachable swivel casters

Attaching wheels:

Connect wheels to stand base before attaching pole.



Screw wheels into floor base by hand, then use wrench to tighten.



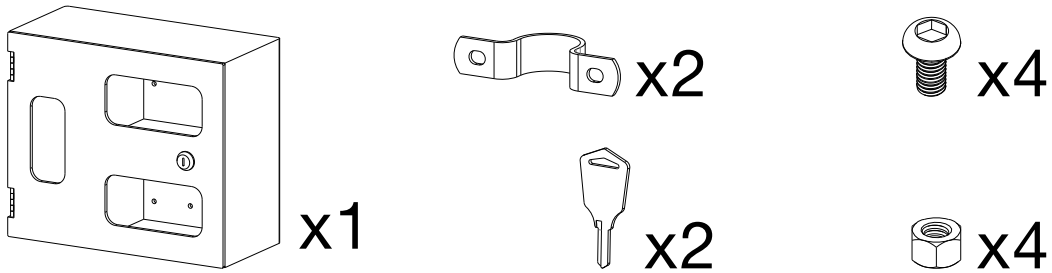


Security Acrylic Sanitizing Station

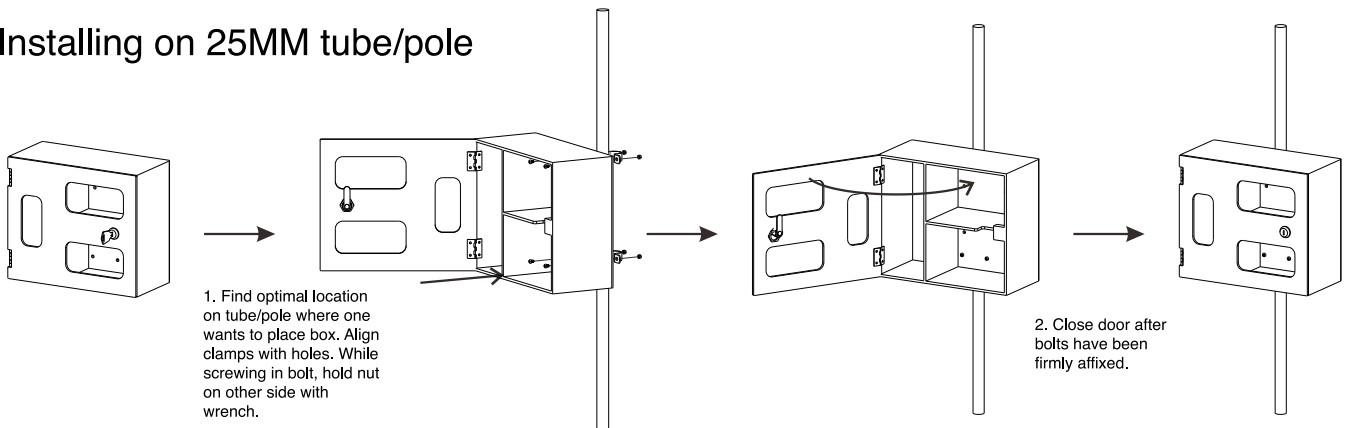
INSTRUCTION MANUAL

ADD-GLVBOX

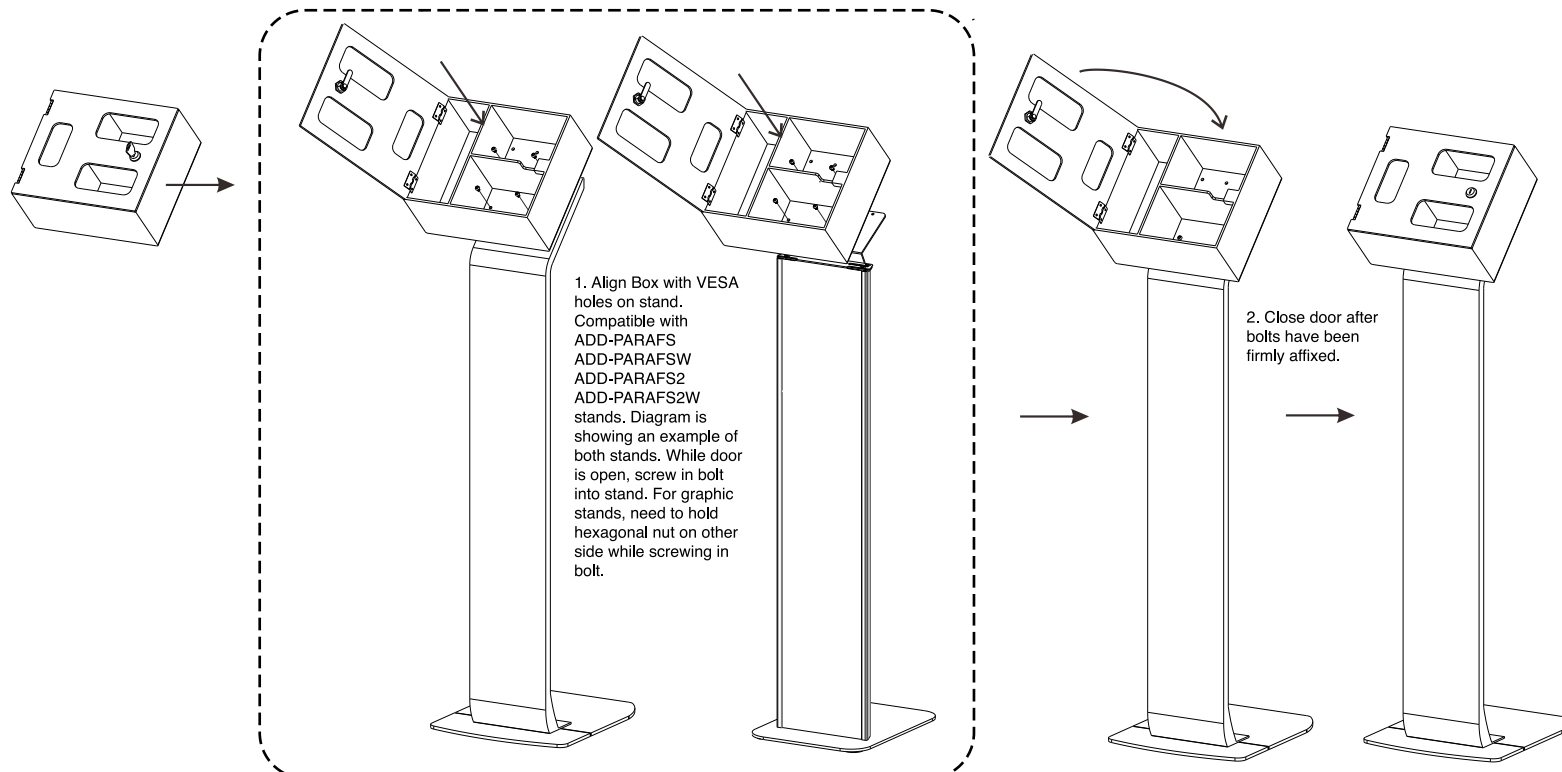
Component Checklist



Installing on 25MM tube/pole



Installing on a VESA 75x75 size

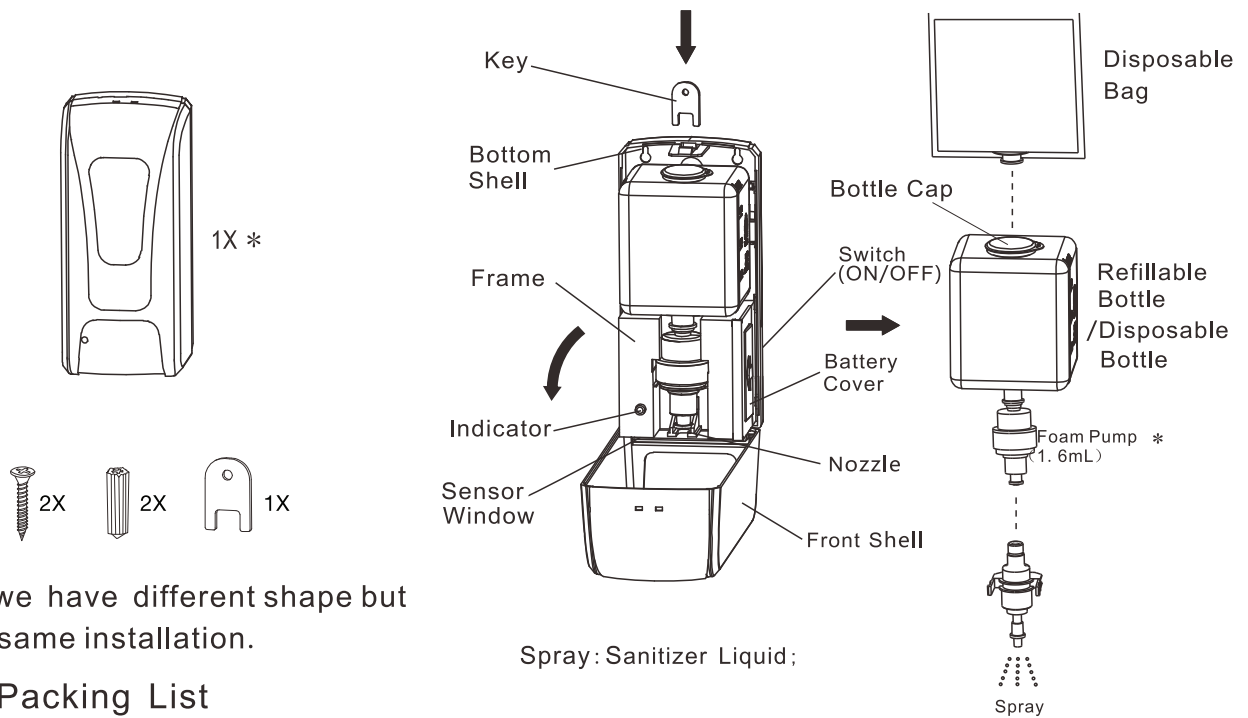




Automatic Hand Sanitizer Dispenser

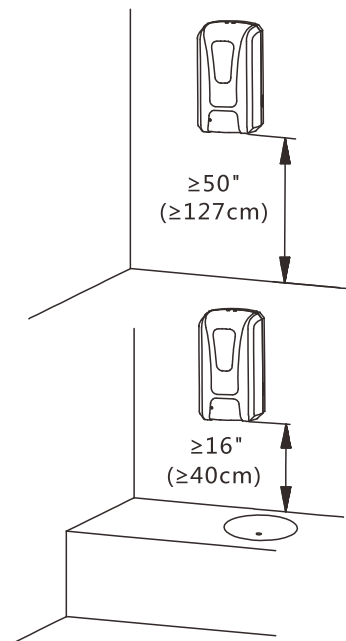
INSTRUCTION MANUAL

ADD-AUTOSP



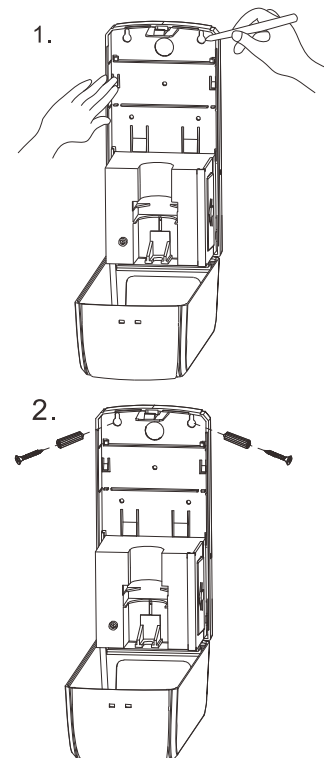
A Packing List

B Part Name

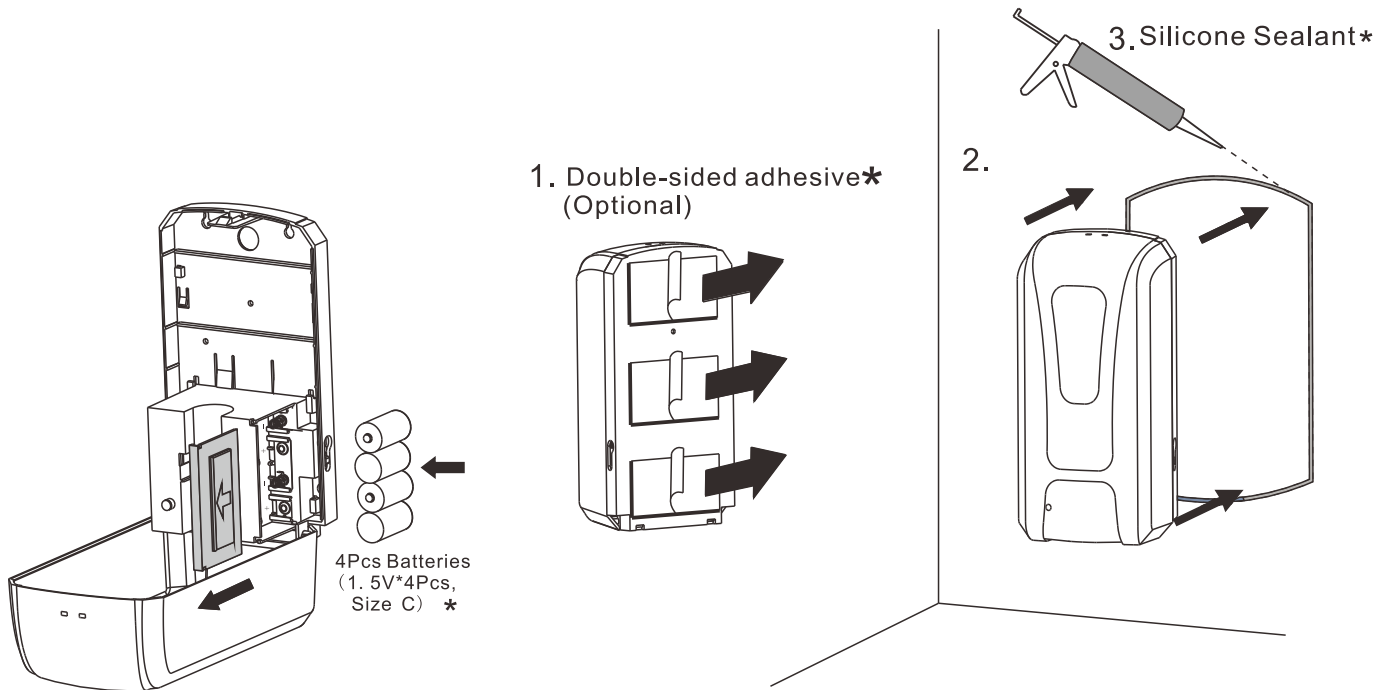


* keep away from sunshine and humid place

C Height from Floor/Table



D Way for Screw

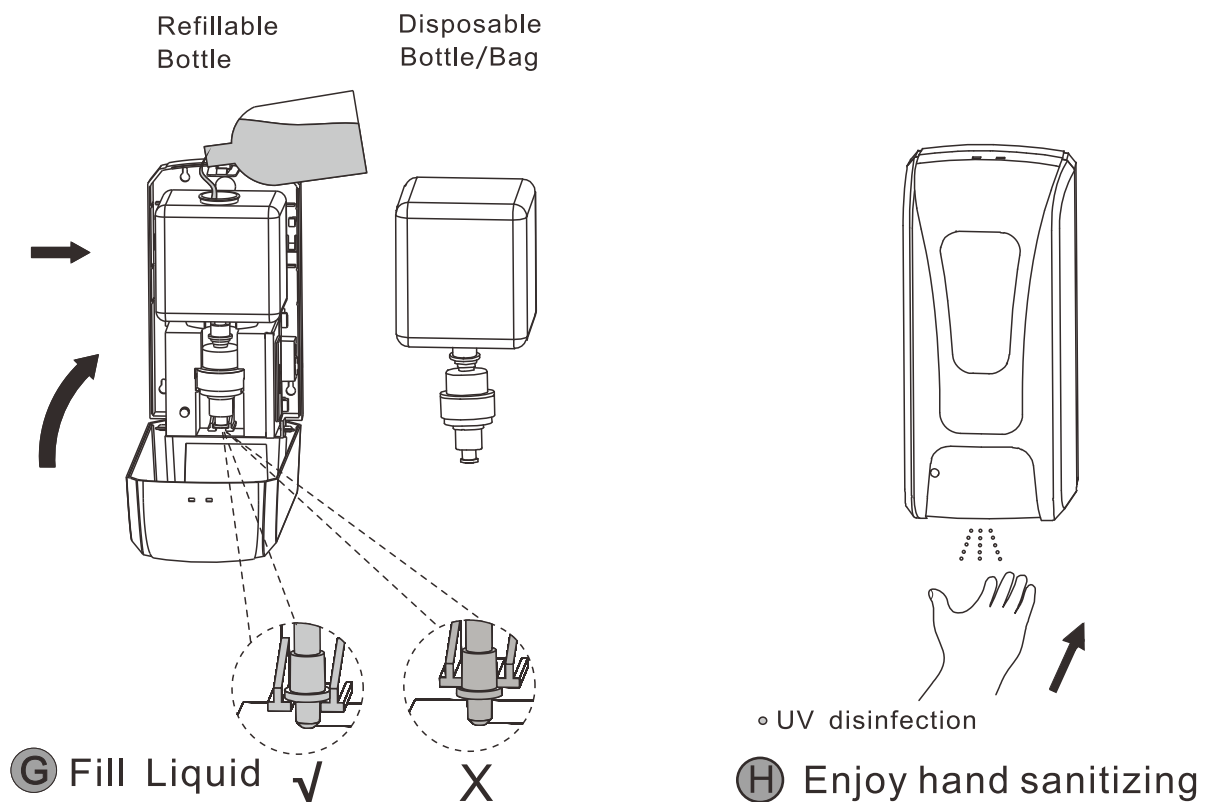


* The Standard Packing is not including and Batteries

* The standard Packing is not including Double-sided adhesive and Silicone sealant

E Install Batteries

F Installation with Adhesive Backing (no screws)



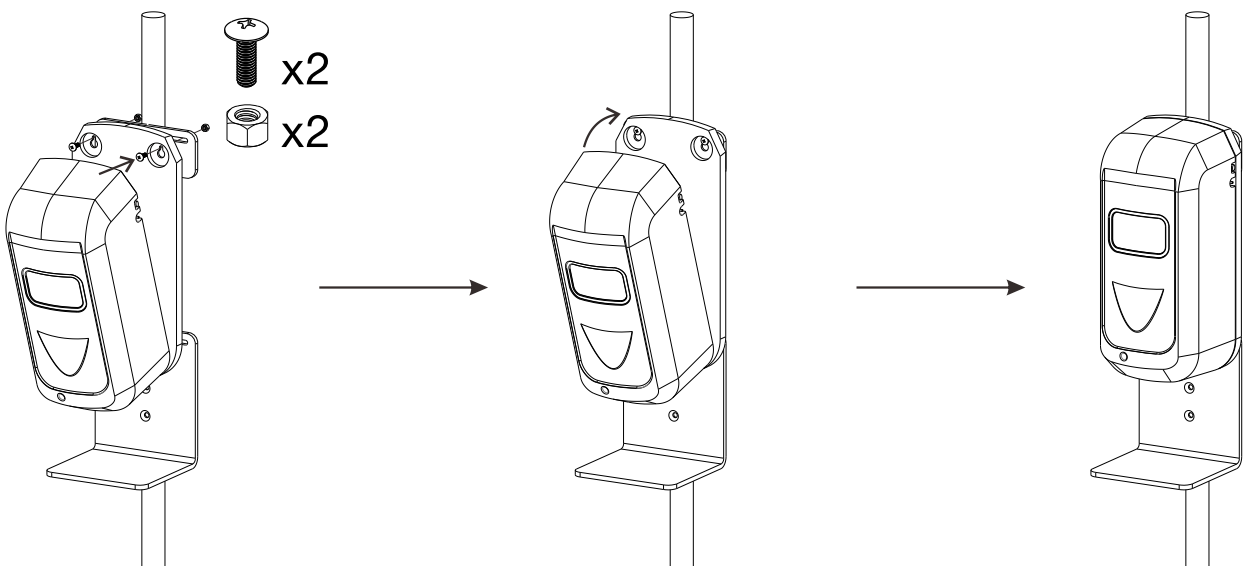
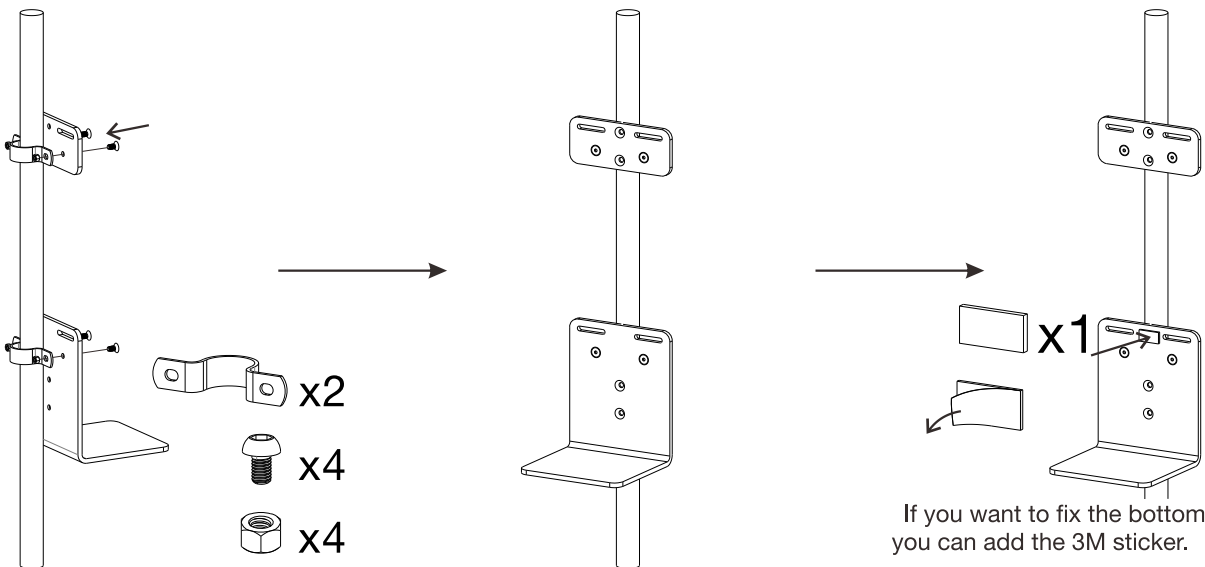
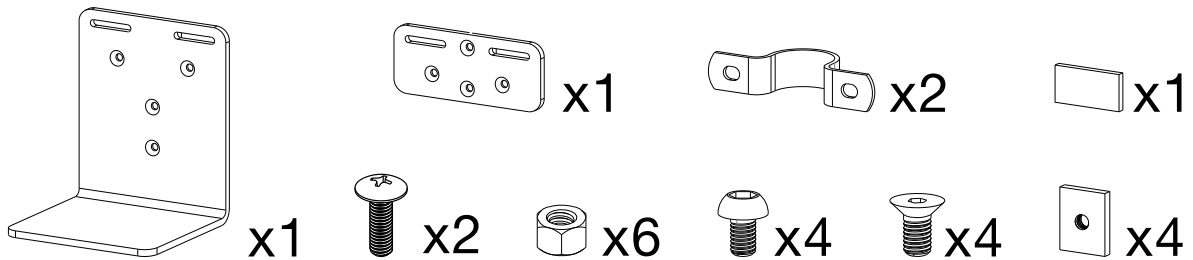


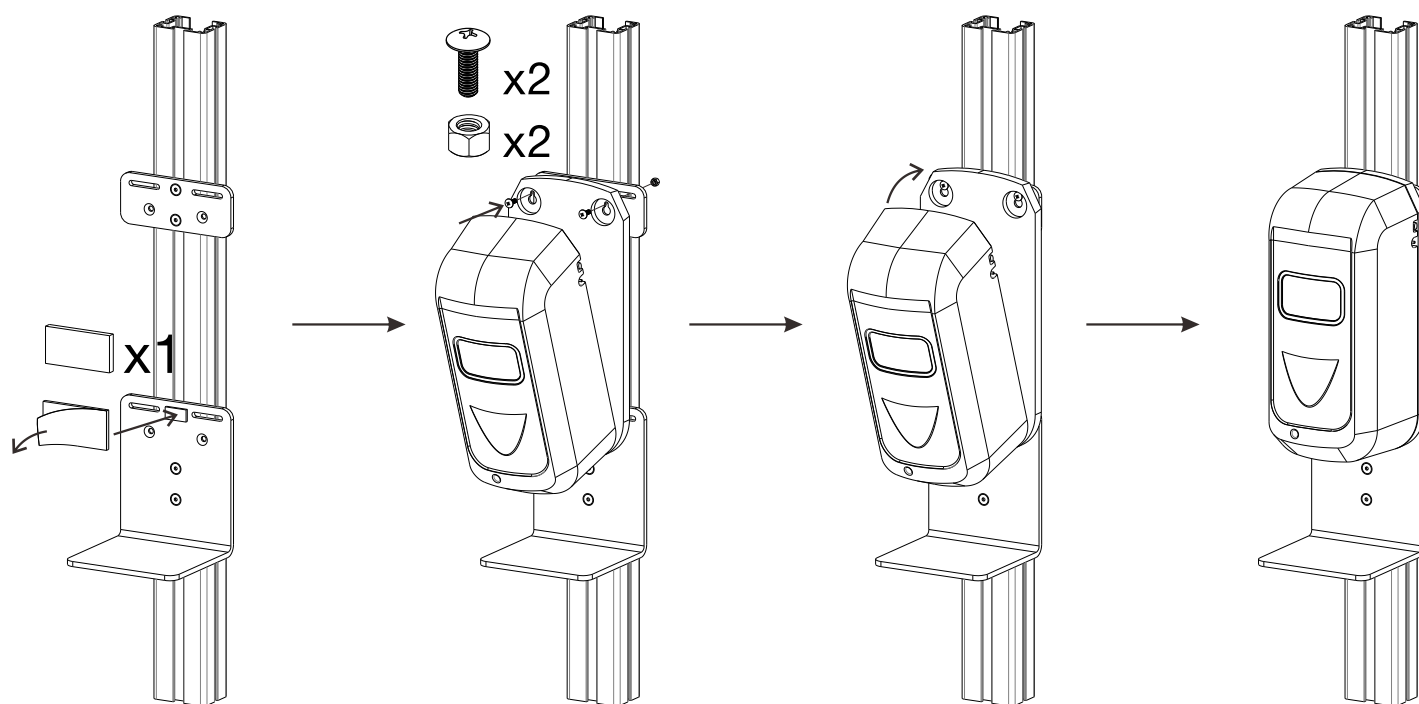
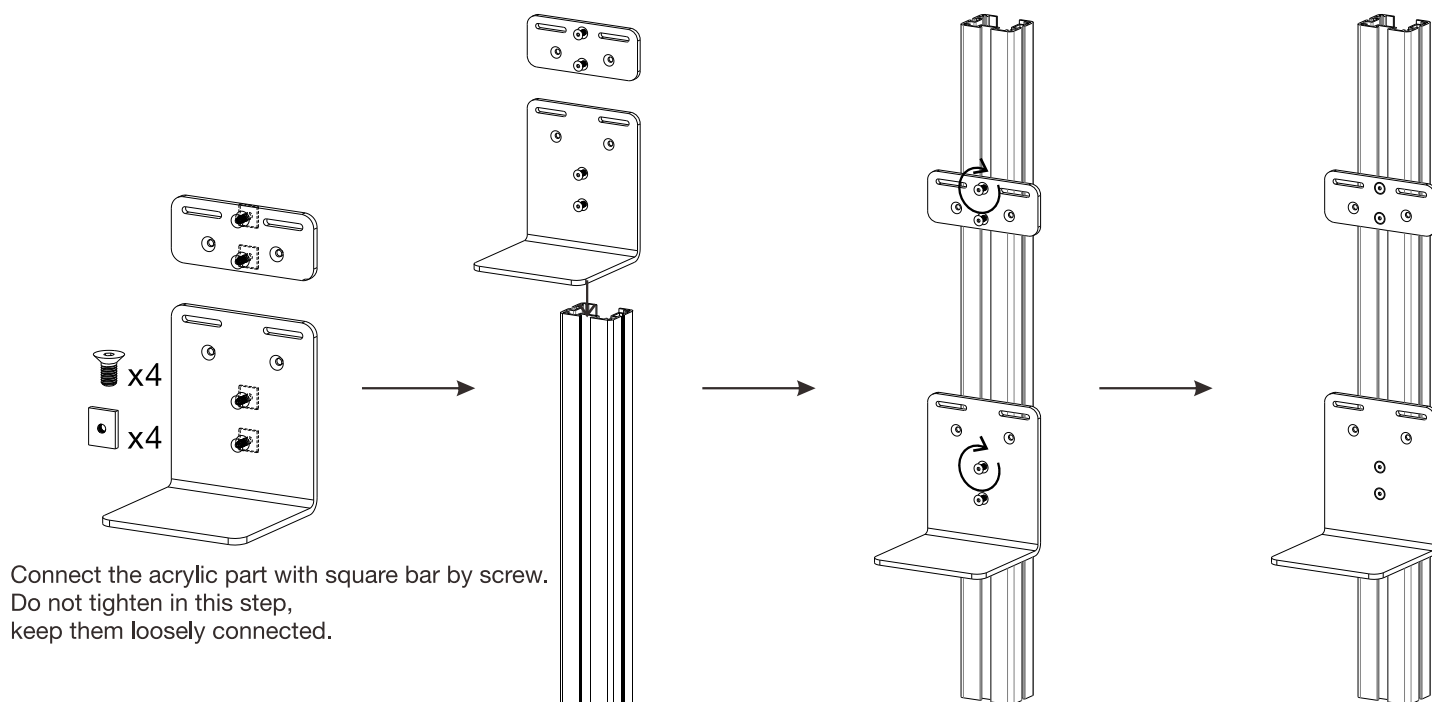
Universal Acrylic Soap Dispenser Holder

INSTRUCTION MANUAL

ADD-ASDH

Component Checklist





If you want to fix the bottom as well, you can add the 3M sticker.