



QPC-WMPW

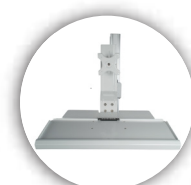
All-in-One Wall Mounted PC Workstation with PC Cradle, VESA Mount and Keyboard



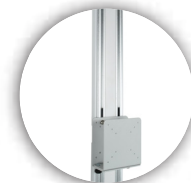
This one device keeps your computer easily accessible when you need it and conveniently stowed out of the way when you don't. The All-in-One Wall-Mounted PC Workstation is able to hold up a 10kg CPU, 5kg keyboard, and 9kg monitor (most displays up to 40inches are beneath the weight limit, but check factory specifications for your specific monitor). The articulating arm allows the display and keyboard to extend up to 1018mm from the wall, and the ergonomic keyboard tray allows you to comfortably type while looking at the screen without putting undo stress on your shoulders, neck or back. When not in use, the entire device folds flush against the wall it's attached to. This support system was designed for a doctor's office or anywhere you need an easily-accessible and reliable sit-and-stand work station.

Features:

- Complete sit-stand workstation accommodating LCD screen, Keyboard and CPU
- Extend LCD and keyboard up to 1018mm from wall
- Equipment folds neatly against the wall when not in use
- Ergonomic keyboard tray
- Sturdy aluminum posts



Ergonomic Keyboard



Adjustable PC Tower Holder



Workstation Fold Away Capability



Arm for adjustability

Specifications:

- Dimensions: 90.5mm (X) x 500mm (L) x 20mm (W)
- CPU Holder weight capacity: 10kgs
- Keyboard holder weight capacity: 5kg
- Max monitor holder weight capacity: 9kg

Package Contents:

- (1) Full Workstation
- (1) Installation Components



	Quantity	Width	Height	Depth	Weight	UPC Barcode
Packaging	-	-	-	-	-	656777016685
Master	-	-	-	-	-	10656777016682