

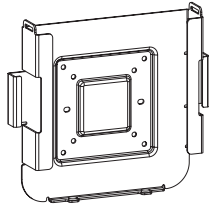


# VESA Compatible Mac Mini Mount

PC-MACMINI

INSTRUCTION - MANUAL

## CONTENTS:



A (x1)



B (x1)



C (x4)  
M4x12



D (x4)  
M4



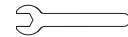
E (x2)  
ST4.2x16



F (x2)  
ST4.2x30



G (x2)  
Ø6x30

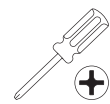
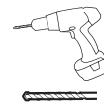
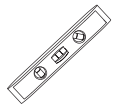


H (x1)  
7mm

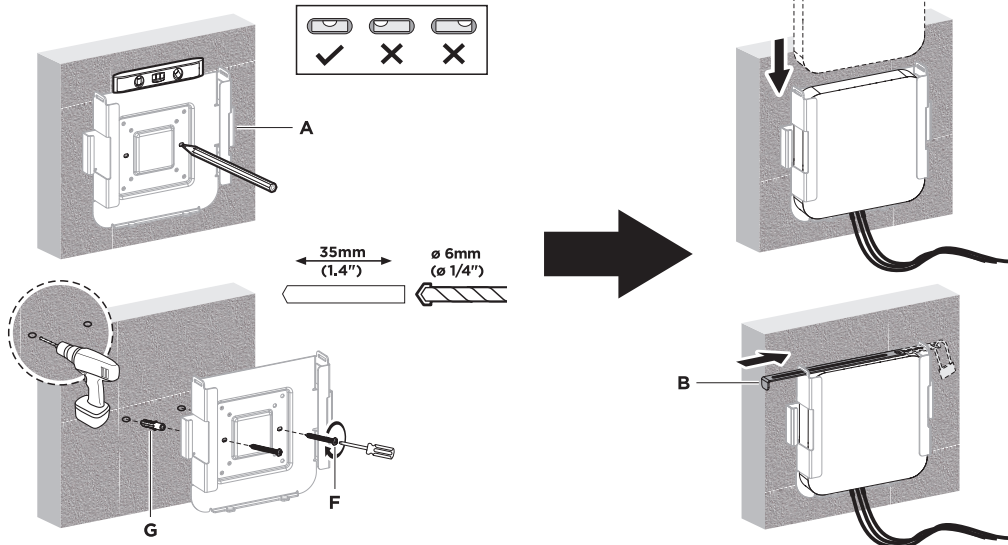
## INSTALLATION:



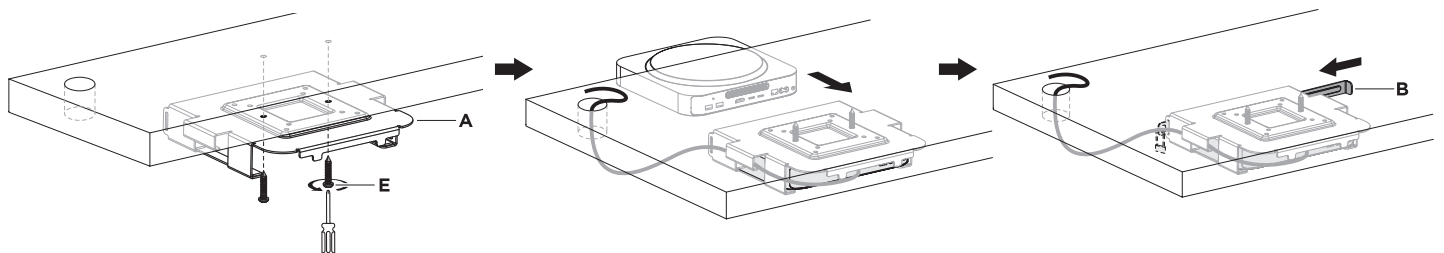
\*\*BELOW : TOOLS REQUIRED FOR INSTALLATION BUT NOT INCLUDED



### a For mounting on the concrete wall



### b For mounting under the desk surface



# C For mounting on 75x75, 100x100 VESA plate

(C D H are needed for the installation)

