

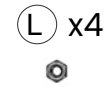
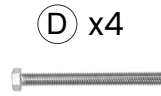
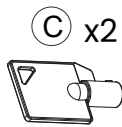
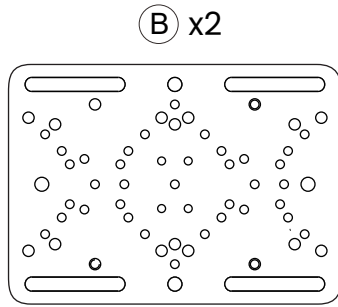
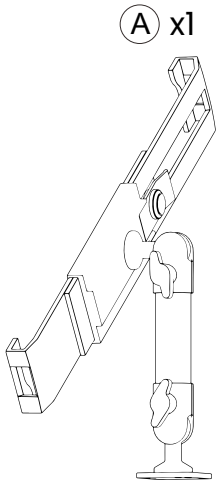


# Tablet Security Forklift Mounting Kit with Universal Mounting Plates and Adjustable Holder

PAD-TSFK

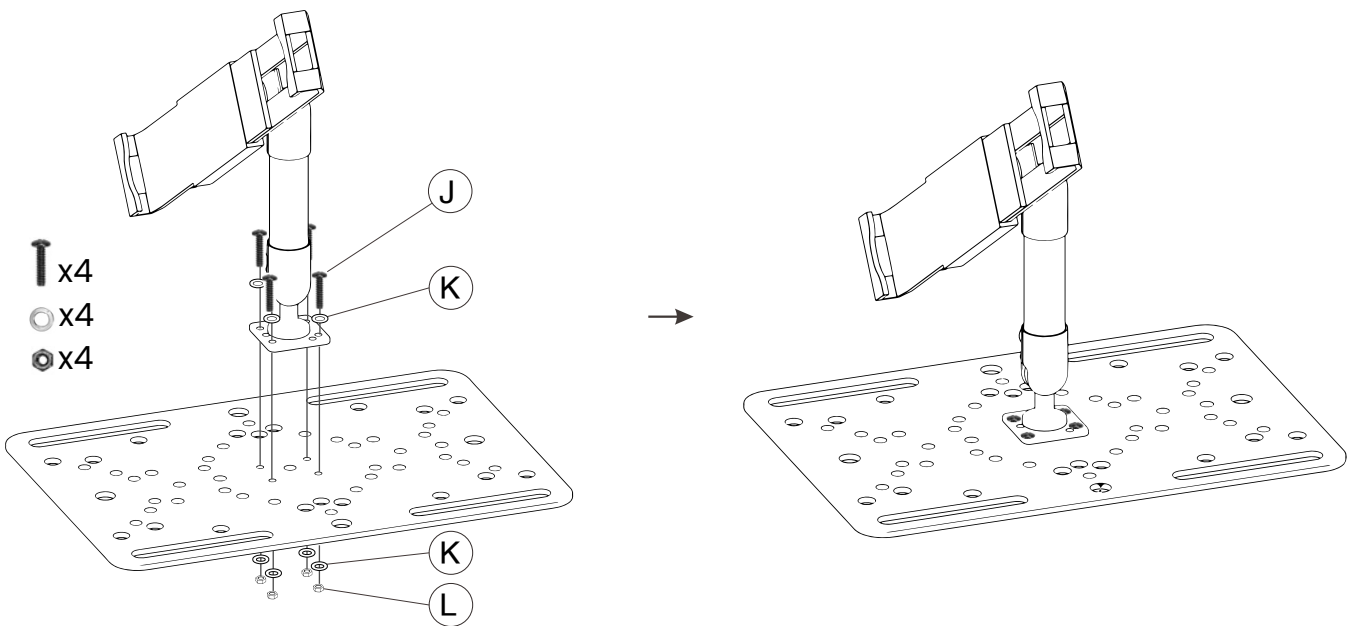
INSTRUCTION - MANUAL

## CONTENTS:



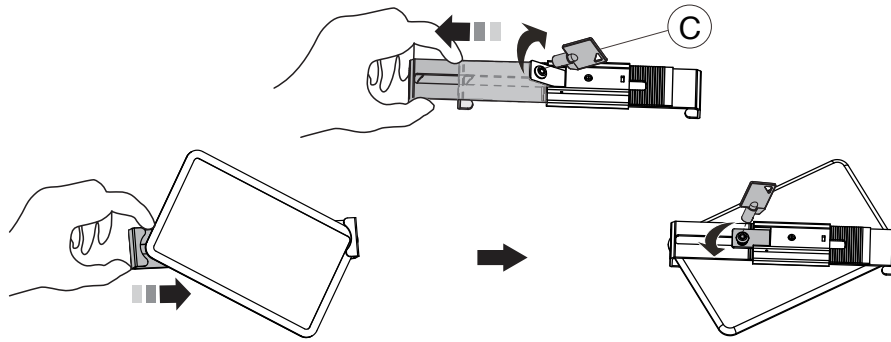
## INSTALLATION:

### 1. Setting up holder into metal plate:



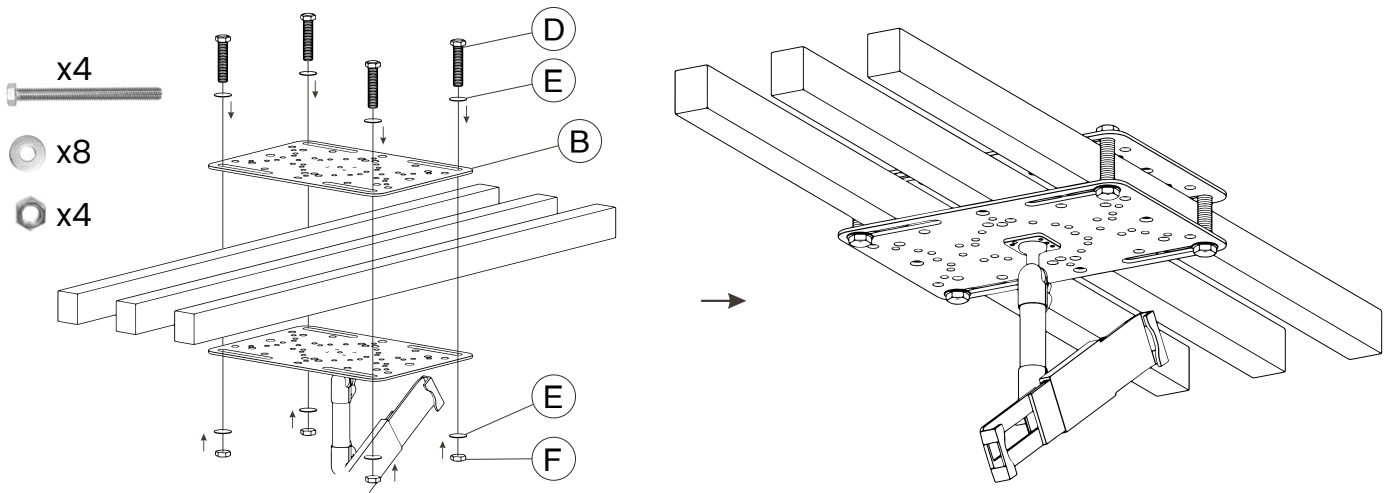
1A. Use the included screws, washers and nuts (J, K, L) and place them through the holder base into the square metal plate (B) holes, screw it in with a screw driver while holding the nuts from behind with your fingers until securely tightened.

## 2. Installing your device and adjusting the tablet holder



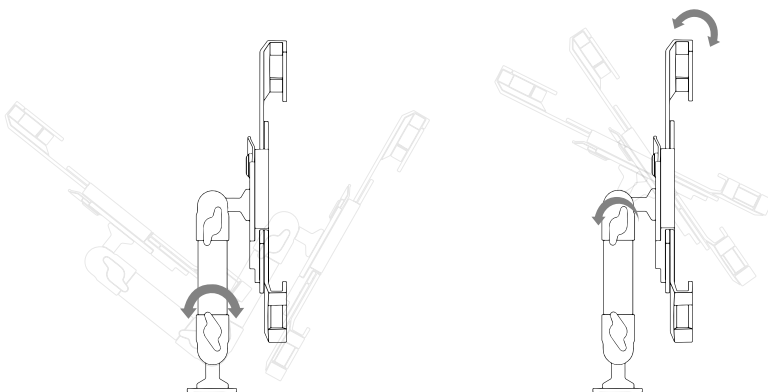
2A. Insert key (C) into lock at back of holder. Turn counterclockwise to unlock, then slide to open. Insert tablet against fixed end, then slide down to hold tight. Turn key clockwise to lock.

## 3. How to attach it to the forklift



3A. First, take the two metal rectangular plates (B) and sandwich the forklift roof bars as illustrated and insert bolts, washers and nuts (D, E, F) rotate them until securely tightened.

## Adjustability



3A. Loosen the knobs to adjust tablet to desired angle then tighten knobs to secure it in place.

### AMPS

- 50\*50mm holes
- 60\*60mm holes
- VESA (75-170)\*75mm holes,
- 90/180\*90mm holes
- VESA (100-200)\*100mm holes
- 120\*120mm holes,
- (75-225)\*150mm holes



### Safety Precautions

Use caution during installation when handling heavy metal plates to avoid injury. CTA Digital Inc. assumes no responsibility of liability for injury or death due to the installation or use of this mount.