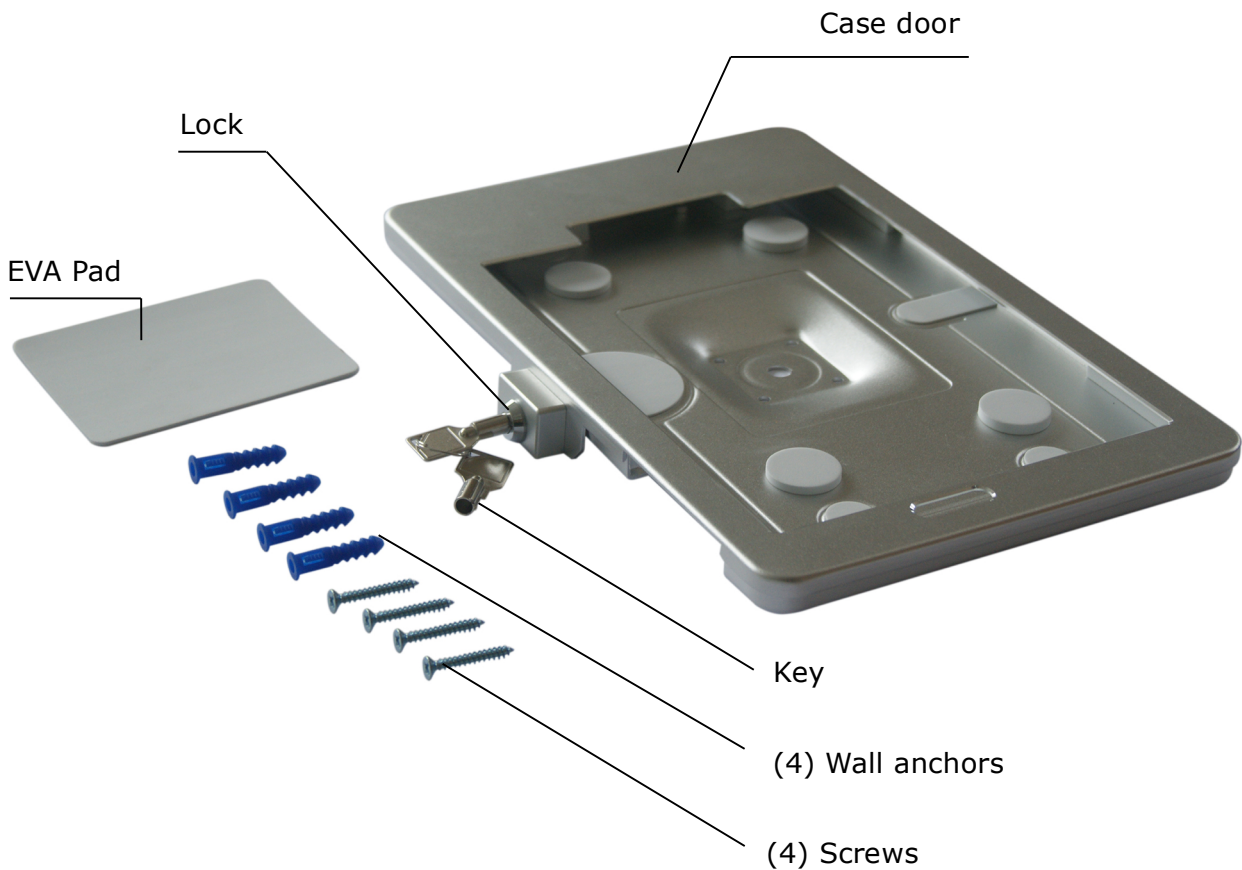




PRODUCT MANUAL

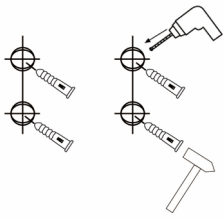
Product Name: Security Wall Enclosure for Samsung Galaxy Tablets

Package Contents

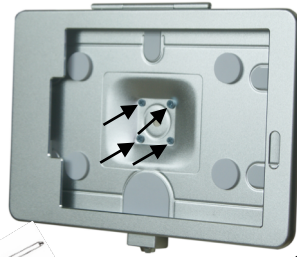


Mounting the enclosure:

- 1) Use a pencil to mark mounting locations and drill 4 holes in wall. Use a hammer or mallet to install wall anchors.
- 2) Align drilled holes with enclosure holes and use a screwdriver and screws to screw into wall anchors.
Stick the EVA pad in the middle of the bracket.

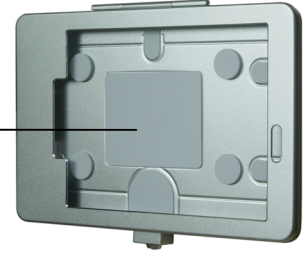


1

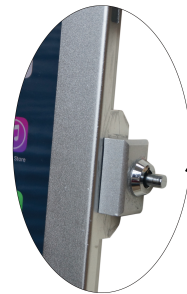
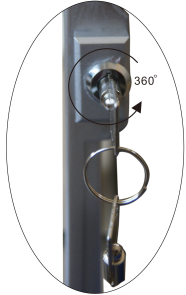


2

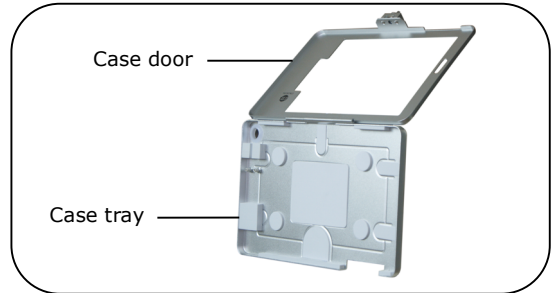
EVA Pad



- 3) Insert the key and turn it 360° to release the lock, and then open the case door.



Unlocked



Case door

Case tray

- 4) Insert tablet then close the case door. Press the button.



Tablet



Press

