



CTA DIGITAL

Security Wall Enclosure

for iPad(2017), iPad Air, and iPad Pro 9.7

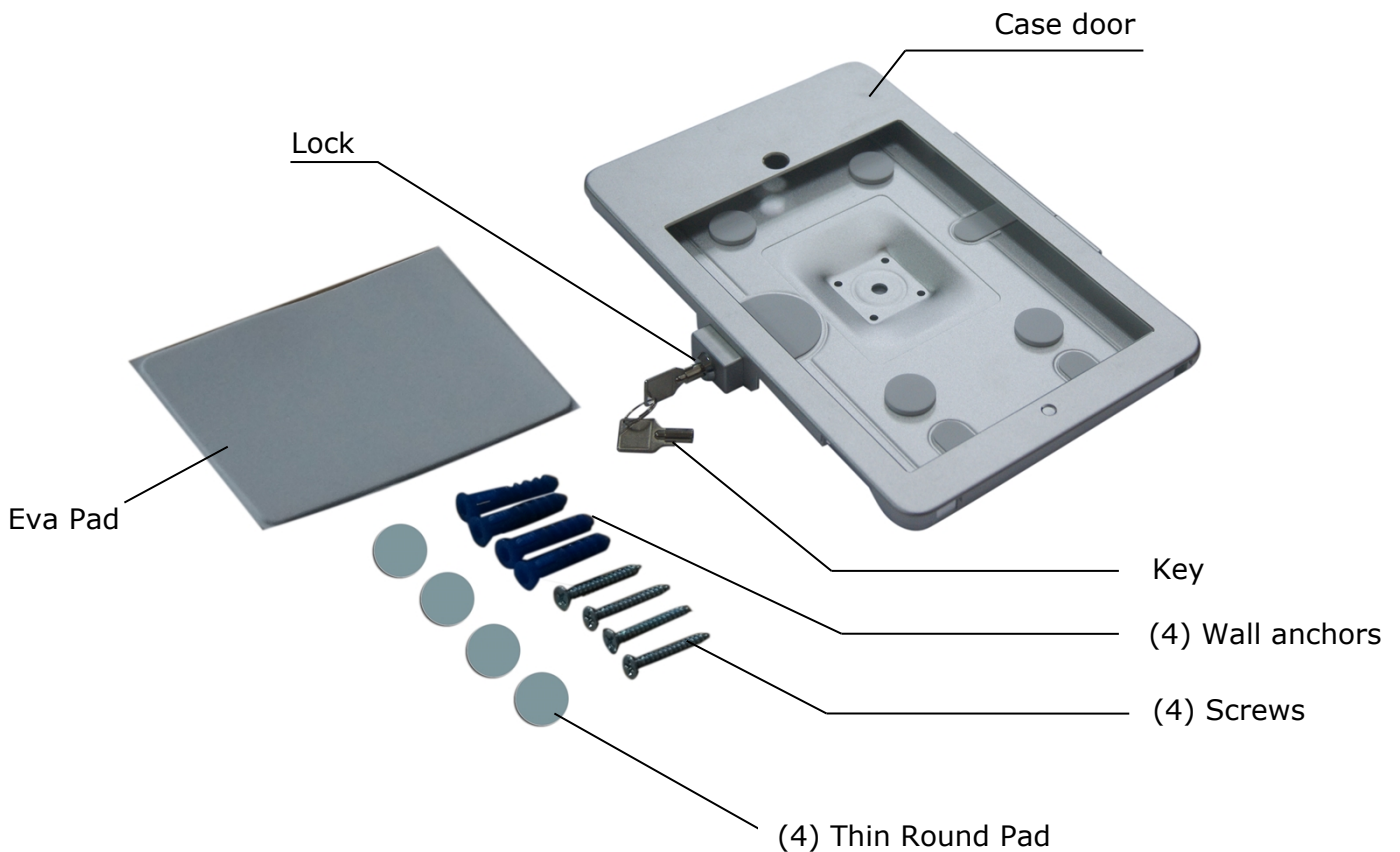
INSTRUCTION MANUAL

PAD-SWE

Please follow the guidelines and instructions as laid out in this instruction manual.

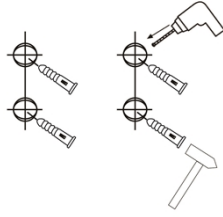


Package Contents



Using the bracket:

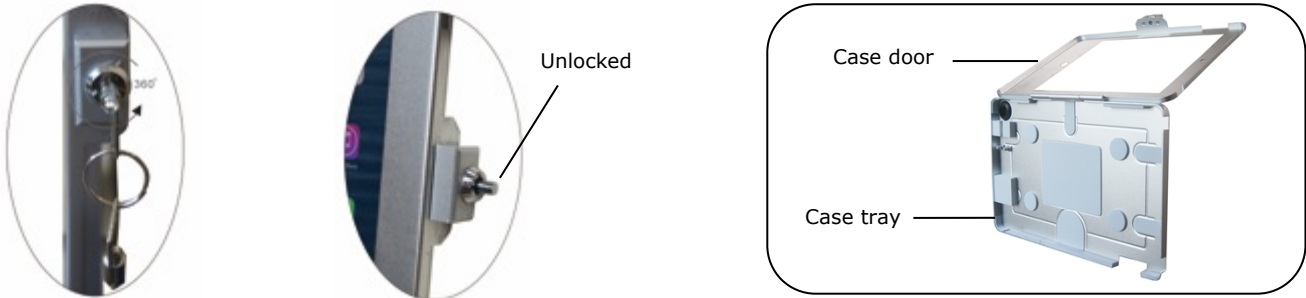
- 1) Use a pencil to mark mounting locations and drill 4 holes in wall. Use a hammer or mallet to install wall anchors.



- 2) Align the hole on the bracket and use a screwdriver and screws to install mount into wall anchors. At last, Stick the EVA pad on the middle of the bracket.



- 3) Use the key to unlock the iPad enclosure, and then open the Case door.



- 4) Insert your iPad into the enclosure and hold it firmly in place and close and lock the enclosure by pushing in the lock button. *Can be installed left, right, or vertically.

