

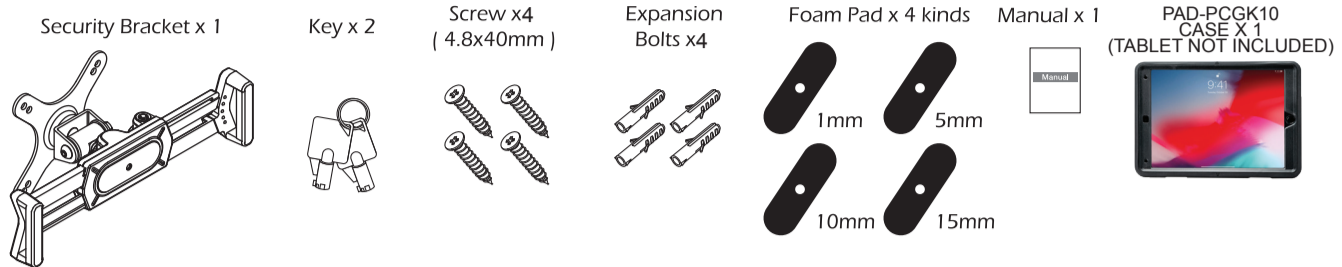


Protective Case with Built-in 360 Degree Rotatable Wall Mount Solution

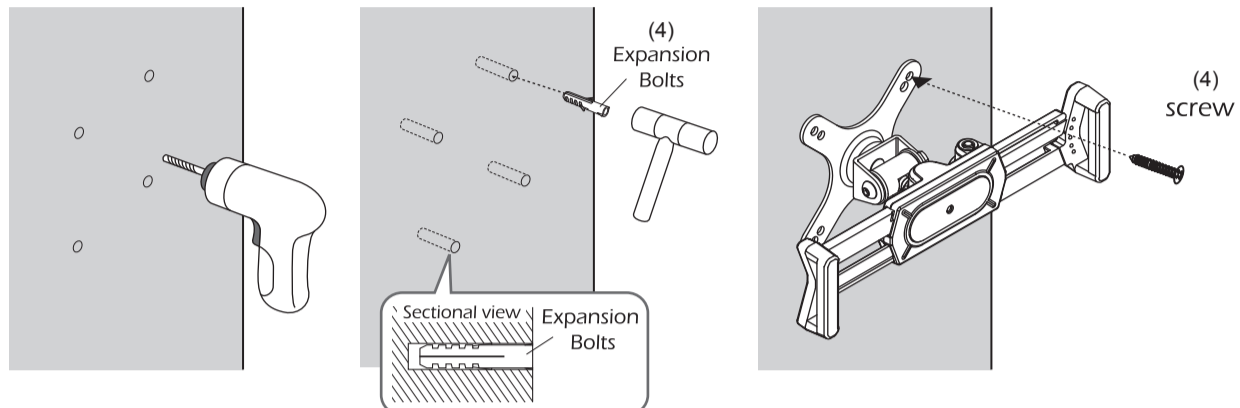
PAD-SVWMB10

INSTRUCTION - MANUAL

Contents

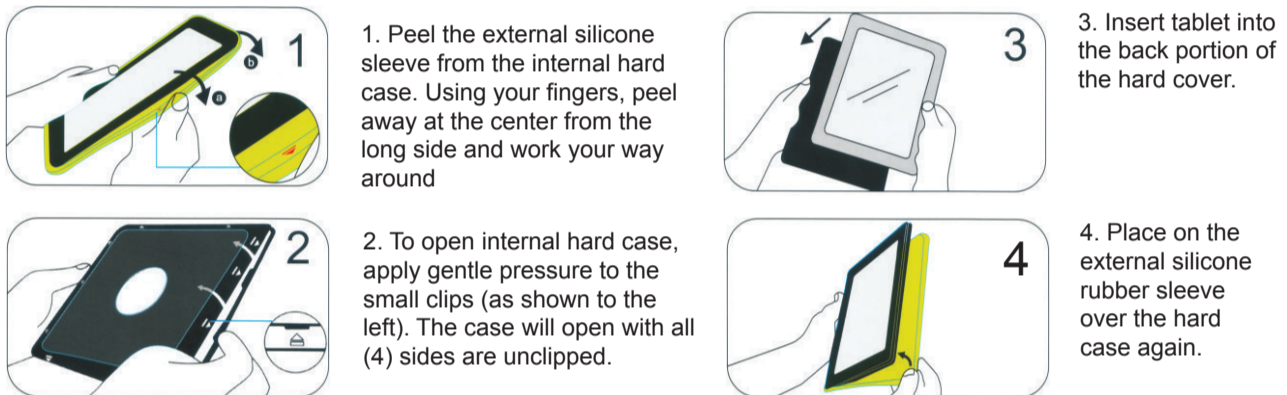


Mounting Bracket On The Wall



1. Drill a hole in the wall to these specifications:
diameter: 6.5~7mm
depth: 40~45mm
2. Knock the (4) expansion bolts completely into the wall. (AS SHOWN)
3. Fix it with (4) screws on the wall. (AS SHOWN)

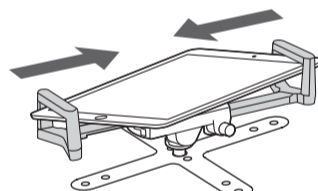
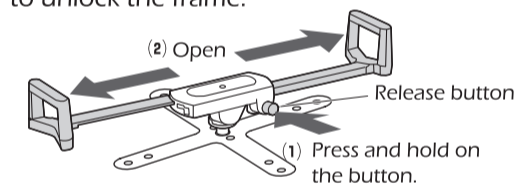
Inserting Tablet into Case



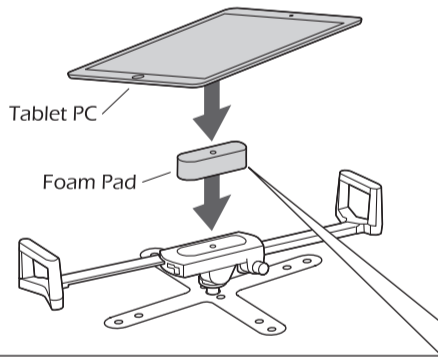
Page 1 of 2

How to install a tablet PC

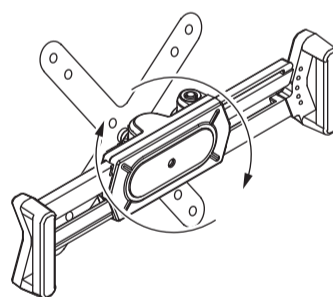
1. Press and hold on the release button to unlock the frame.
2. Install the tablet PC on the frame.
3. Adjust the frame to fit your tablet PC.



2. Install the tablet PC on the frame.

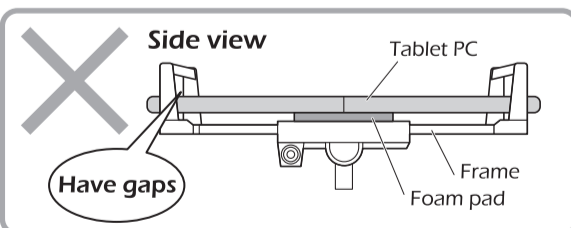
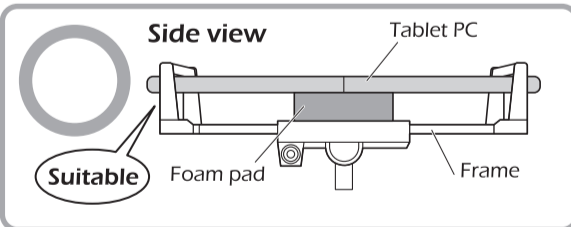


Adjustable Angle



Can adjust thickness with foam pad

Use the sponge to adjust the thickness between the tablet and the stand.



Paste method

1. Tear off the backing paper on the foam pad.
2. Stick the foam pad to the frame as shown in the right picture.

Page 2 of 2