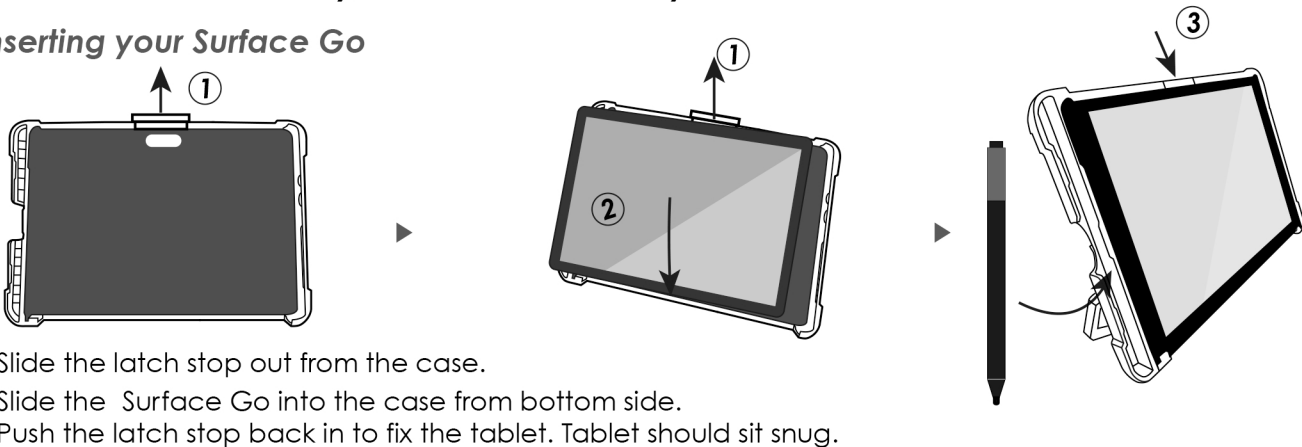


\* This item is designed for Microsoft Surface Go

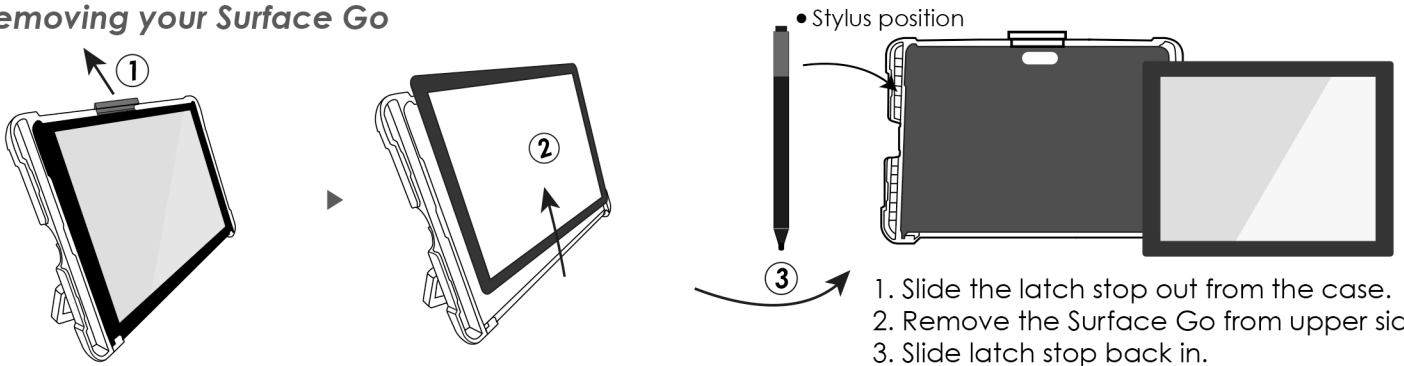
\* Contents: Case Main body, Cable Lock with key, Manual.

## ■ Inserting your Surface Go



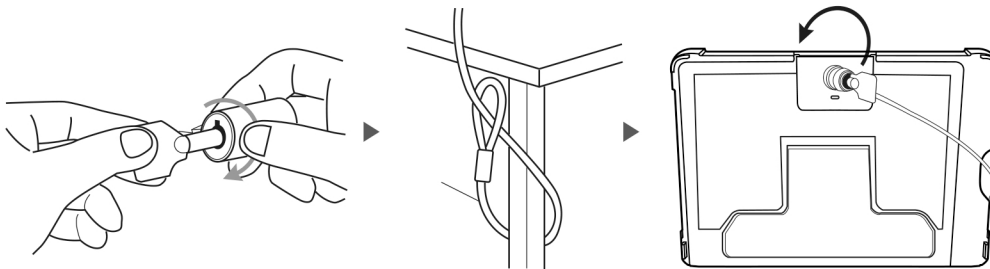
1. Slide the latch stop out from the case.
2. Slide the Surface Go into the case from bottom side.
3. Push the latch stop back in to fix the tablet. Tablet should sit snug.

## ■ Removing your Surface Go



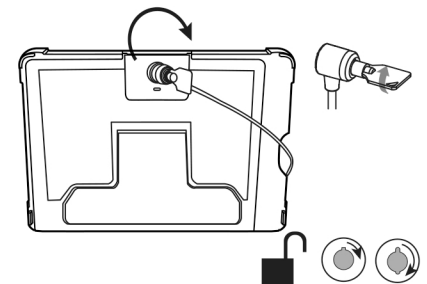
1. Slide the latch stop out from the case.
2. Remove the Surface Go from upper side.
3. Slide latch stop back in.

## ■ Using the lock



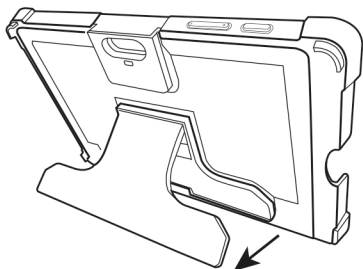
1. Insert key into cable lock head and turn to unlock.
2. Pass cable through looped end around a table or other fixture.
3. Insert the tip of lock into the case lock slot.
4. Turn the key to lock, then remove key.

## ■ Unlocking



1. Insert key and turn to unlock.
2. Remove cable.

## ■ Using the kickstand



1. Pull out the stand from case
2. Adjust to desired angle.