



Protective Case with Built-in 360 Degree Rotatable Grip Kickstand & Pen Slot

For Samsung Galaxy Tab S7+, S8+ & S7 FE

PAD-PCGKS8P

INSTRUCTION - MANUAL

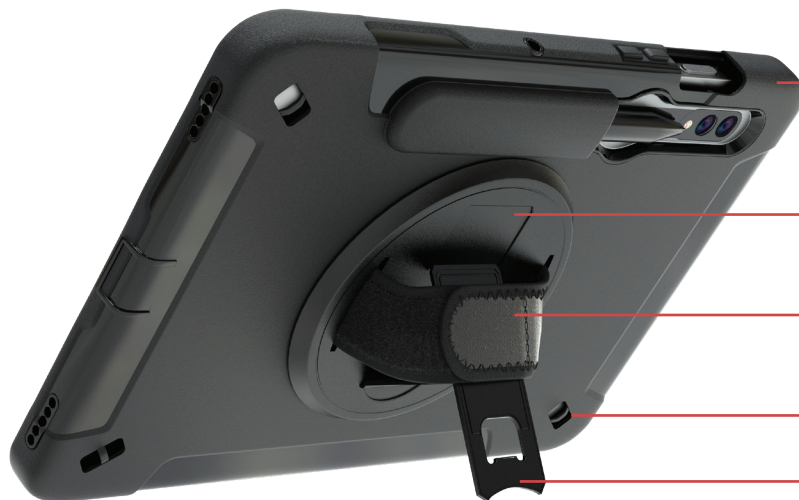
CONTENTS



X1

**Tablet Not Included

TABLET CASE FEATURES



Impact case to protect your iPad

360° rotation

Adjustable hand strap

Carry strap hooks

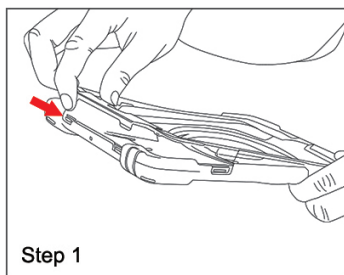
Foldable kickstand designed to provide maximum safety

**Tablet Not Included

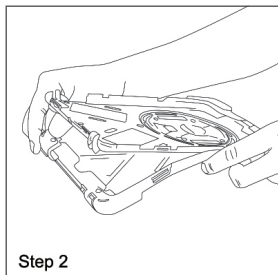
INSTRUCTIONS

**f your iPad has a previously installed screen protector, please remove it before continuing.

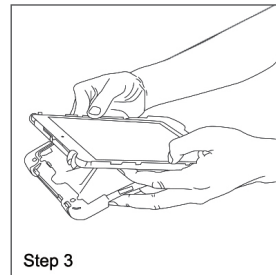
1. How to insert tablet into case



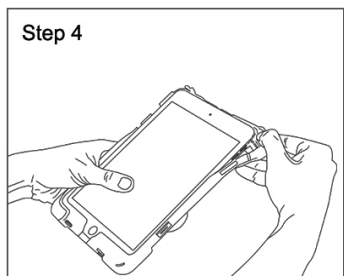
1A. Peel away plastic frame starting with the bottom of the case as shown to the left. Work your way around the perimeter, unclipping the frame where there are clips.



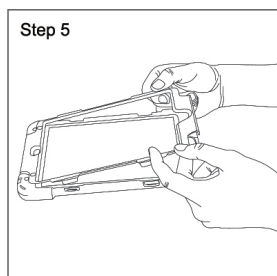
1B. Starting at a corner of the case, peel away the silicone jacket. Work your way around until only the back half of the hard case remains



1C. Insert tablet into the back portion of the hard case

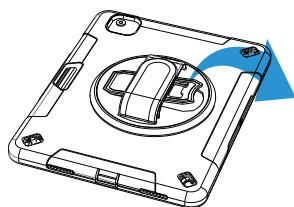


1D. Starting at a corner, re-apply silicone jacket around the back portion of the hard case

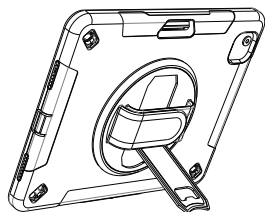


1E. Re-insert the front frame back on. Make sure you go around the perimeter of the case and clip all the clips securely and tight.

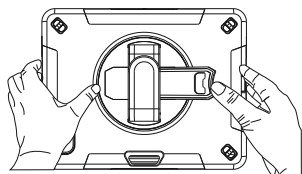
2. How to flip out kickstand



2A. Locate kickstand at case rear and fold out underneath strap.



2B. Display tablet at desired viewing angle.



2C. Press kickstand back in to return to handheld mode.

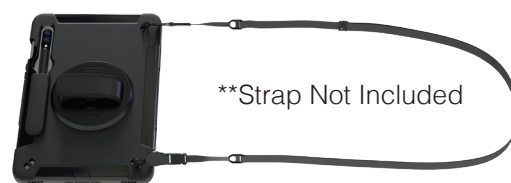
3. How to use in handheld

**Tablet Not Included



3A. Identify velcro handstrap and adjust to fitted size. Insert your hand as shown and you're ready for mobile setup.

4. Attaching carry strap



4A. If you have the corresponding shoulder strap (sold separately), insert the ends into the strap holes. Then tie them up and clasp the front as shown to the left.