



Protective Case with Built-in 360° Rotatable Grip Kickstand For Lenovo P11 Gen2 tablet

PAD-PCGK2P11

INSTRUCTION - MANUAL

CONTENTS



X1

**Tablet Not Included

TABLET CASE FEATURES

Impact case to protect your tablet

360° rotation

Adjustable hand strap

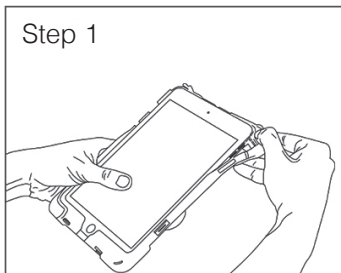
Foldable kickstand designed to provide maximum safety

Carry strap hooks

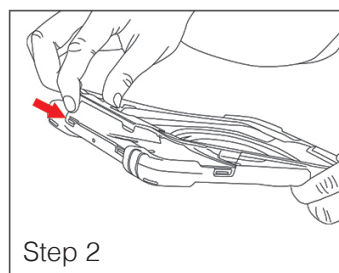
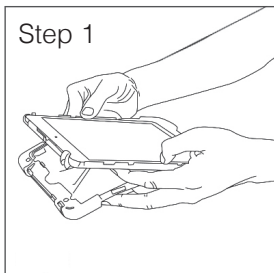


**Tablet Not Included

1. How to insert tablet into case

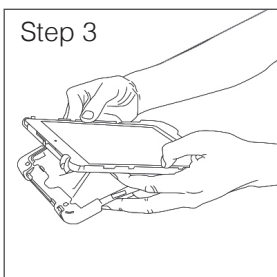


Starting at a corner of the case, peel away the silicone jacket. Work your way around until only the hard case remains.

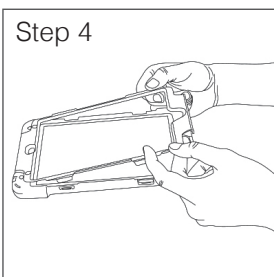


Step 2

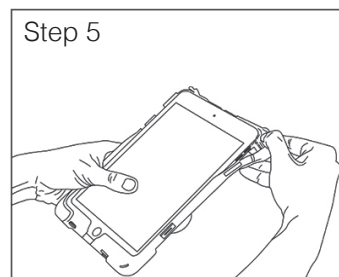
Peel away plastic frame starting with the bottom of the case as shown to the left. Work your way around the perimeter, unclipping the frame where there are clips.



Insert tablet into the back portion of the hard case

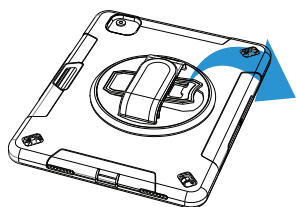


Re-insert the front frame back on. Make sure you go around the perimeter of the case and clip all the clips securely and tight.

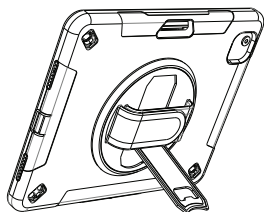


Starting at a corner, re-apply silicone jacket around the back portion of the hard case and you're all set.

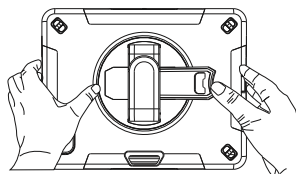
2. How to flip out kickstand



2A. Locate kickstand at case rear and fold out underneath strap.



2B. Display tablet at desired viewing angle.



2C. Press kickstand back in to return to handheld mode.

3. How to use in handheld

****Tablet Not Included**



3A. Identify velcro handstrap and adjust to fitted size. Insert your hand as shown and you're ready for mobile setup.

4. Attaching carry strap



****Strap Not Included**

4A. If you have the corresponding shoulder strap (sold separately), insert the ends into the strap holes. Then tie them up and clasp the front as shown to the left.