



Magnetic Splash-Proof Case with Metal Mounting Plates and Table Stand

for iPad 8th Gen 10.2", iPad Air 4, iPad Pro 10.5" and More

INSTRUCTION MANUAL

Thank you for choosing CTA Digital's product. We hope that you will enjoy using it.
Please follow the guidelines and instructions as laid out in this instruction manual

CONTENTS:



x1

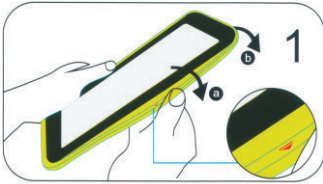


x1

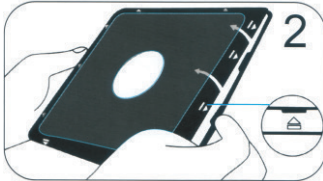
**Stand comes fully assembled

INSTRUCTIONS:

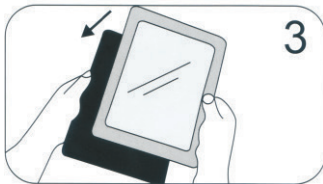
1. Locate tablet case and insert device.



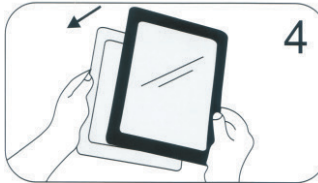
1. Peel the external silicone sleeve from the internal hard case.



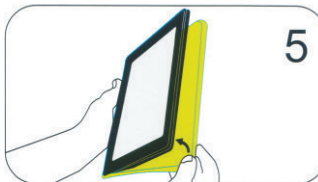
2. To open internal hard case, apply gentle pressure to the small clips (as shown to the left). The case will open with all (4) sides are unclipped.



3. Insert tablet into the back portion of the hard cover.



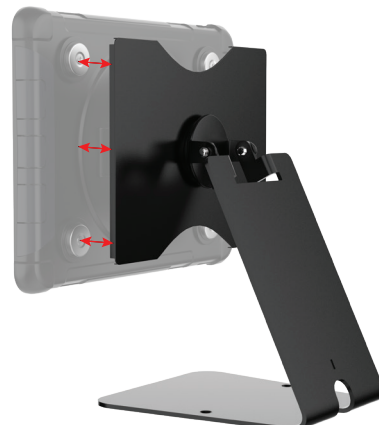
4. Clip the front screen with the back portion of the hardcover around all the edges.



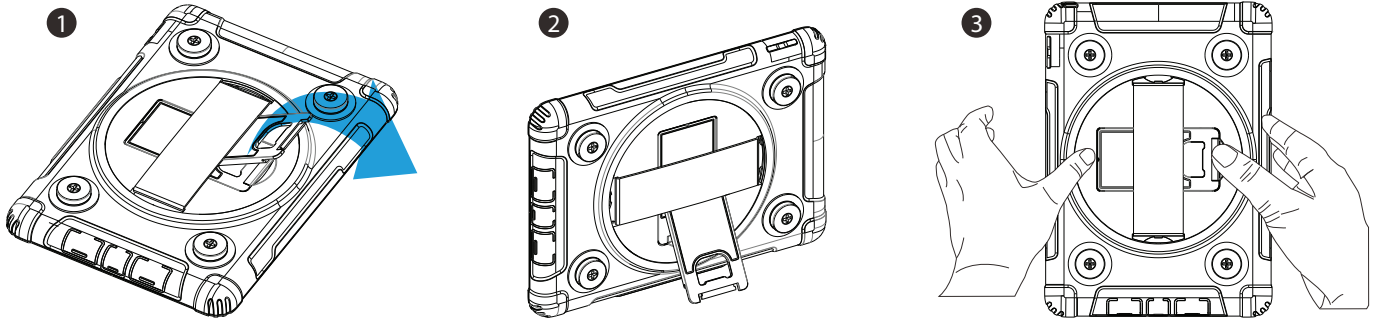
5. Place on the external silicone rubber sleeve over the hard case again.

2. Placing magnetic tablet case on stand

Take a PAD-MSPC10 series case and align PAD-MSPC10 series case magnets to the (4) corners of the metal stand. Adjust omni-directionally and tilt to your preference.



How to fold out tablet kickstand:



1. Locate kickstand at case rear and fold out underneath strap
2. Display tablet at desired viewing angle
3. Push kickstand back into the original spot to return to handheld mode.