



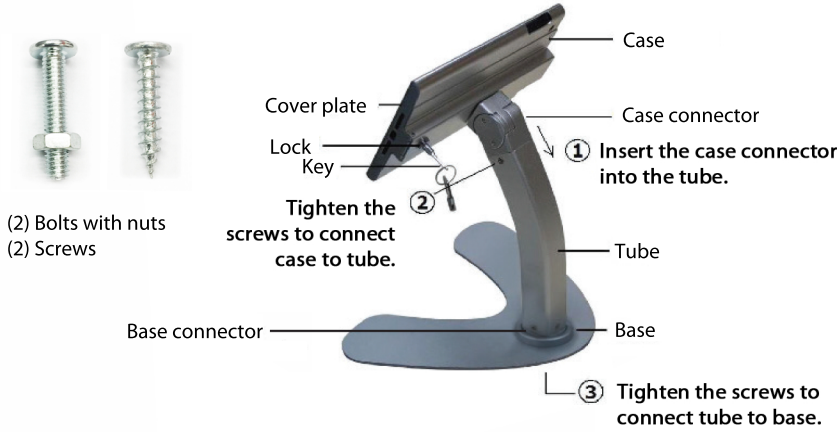
CTA DIGITAL

# Dual Security Kiosk Stand with Locking Case and Cable for iPad mini 1st-4th Generation PAD-ASKMB

PAD-ASKMB

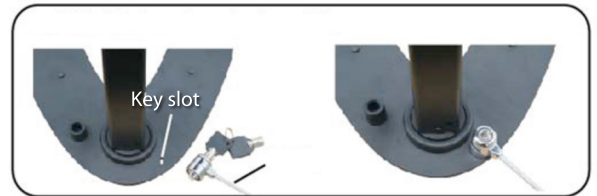
Thank you for choosing CTA Digital's product. We hope that you will enjoy using it. Please follow the guidelines and instructions as laid out in this instruction manual.

## PACKAGE CONTENTS (ASSEMBLED)



### Using anti-theft cable:

1. Attach cable to slot at base of stand or back of case..
2. Attach opposite end to any permanent fixture using loop.



## Inserting your iPad mini



- 1 Insert key into lock and turn to unlock.



- 2 Pull open cover plate using a finger or the key.



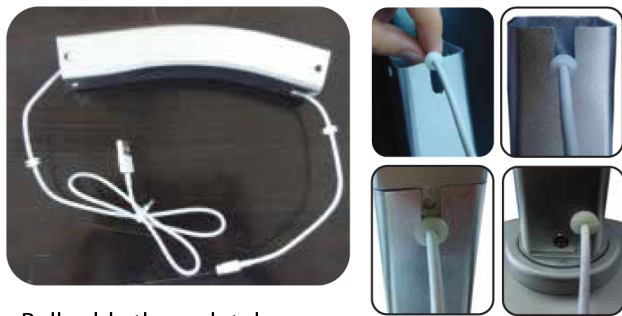
- 3 Insert iPad mini into the case and close the cover plate. Turn key to lock.



## Cable management system



Slide protectors over the cable.



Align protectors so opening is perpendicular to slot openings on tube.

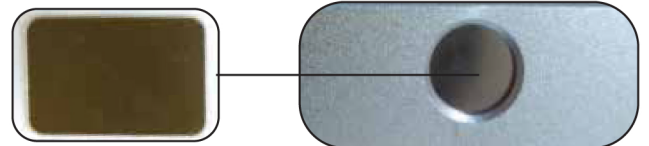
Pull cable through tube.

## Optional accessories

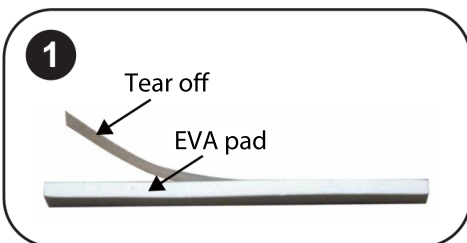
Stick adhesive pads to bottom of stand base for scratch protection and temporary mounting.



Metal insert to cover the Home button



## Using the adapters for iPad mini 1, 2, and 3



1. Remove adhesive sticker from EVA pad.
2. Insert EVA pad into the top of the inside of the case, using Allen key to press into place.
3. Insert iPad mini.
4. Shut and lock the case.