

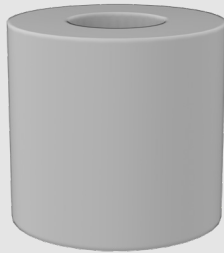


ADD-WEIGHT

Add-On Heavy Duty Steel 8lb Weight for CTA Rolling Floor Stands



**Floor stand and tablet shown for example and NOT included



Add-On Heavy Duty Steel 8lb Weight for CTA Rolling Floor Stands

CTA Digital's handy 8-pound weight stabilizes floor stands with multi-jointed arms that hold tablets, enclosures, and monitors. Simply slide the cylindrical weight down the center pole of CTA's line of floor stands. It's light grey matte coating looks great with any color or finish, and helps maintain the appropriate center of gravity, allowing users to safely extend joints, longer goosenecks, or other adjustments requiring counterbalance.



Features:

- Light grey matte finish
- Robust steel material construction
- Cylindrical shape with center hole is simple to add to floor stands

Specifications:

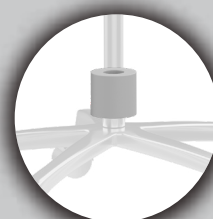
- Dimensions: 3"H x 4" diameter
- Opening: 1-3/4"
- Weight: 8 lbs.

Package includes:

(1) Weight



Robust Steel



Easy Installation



Matte Finish

	Quantity	Width	Height	Depth	Weight	UPC Barcode
Packaging	-	-	-	-	-	656777022624
Master	-	-	-	-	-	10656777022621