

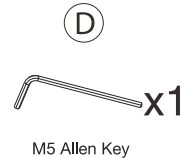
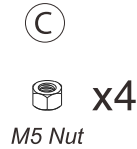
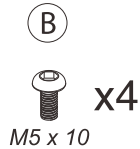
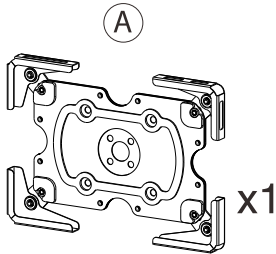


Sleek Universal Holder (Black/White) For 9.7"-12.9" Tablets

ADD-SUHW / ADD-SUHB

INSTRUCTION - MANUAL

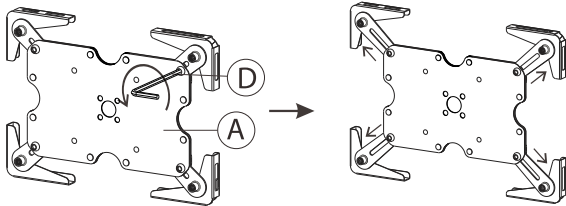
CONTENTS:



INSTALLATION:

1. Setting up Holder & Tablet

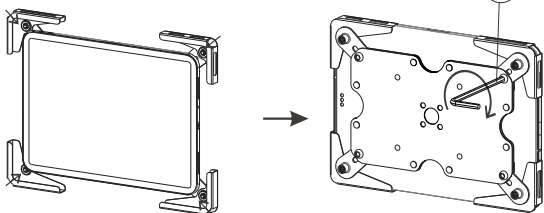
****JUST LOOSEN THE SCREW BY HALF A TURN TO RELEASE THE CORNERS.**



1A. Begin by loosening the four holder arms. Find the screw on the body (A) as illustrated and loosen all with provided tool (D).

1B. After loosening, extend the arms outwards as far as the range can go.

****TABLET IS FOR ILLUSTRATION PURPOSES AND NOT INCLUDED**

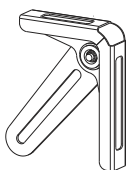


1C. Insert tablet and retract the arms to the corners for a secure and tight fit.

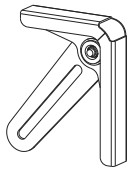
1D. Use provided tool (D) and rotate as illustrated to tighten and secure the holder arms in place.

3. Swapping out Corner Arm (optional)

Exposed Corner



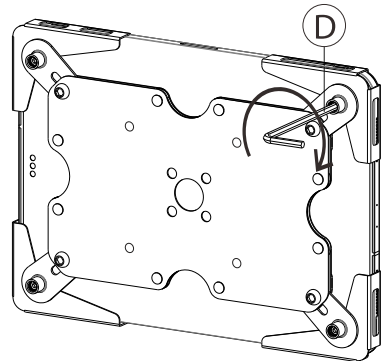
Solid Corner



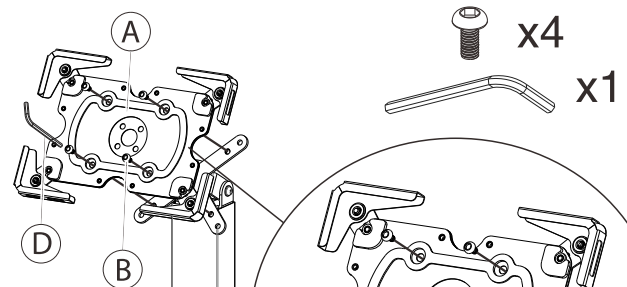
3A. You can switch out the corner arms from an exposed arm to a more solid arm or vice versa as preferred. Exposed corners allow more access to the buttons, ports and openings. Simply unscrew and replace.

2. Adjusting the Depth

2A. After properly inserting tablet into the holder, use the provided tool to securely fit the tablet with regards to the depth. Rotate clockwise until securely fastened. Repeat this for all four holder arms at the extruded screw spot as illustrated to the right.



4. When Mounting to a VESA Compatible Item



****Floorstand shown for illustration only NOT INCLUDED.**

4A. Align VESA holes of tablet holder to that of the VESA compatible item. Rotate from above as illustrated using provided tool (D) and screws (B) until securely fastened. Make sure to do this step BEFORE tablet is inserted.