



ADD-PROBE

Probe Holder

For Ultrasound and Medical Equipment



***Floor Stand & Accessories are being used to illustrate a possible setup and are not included.*

Features:

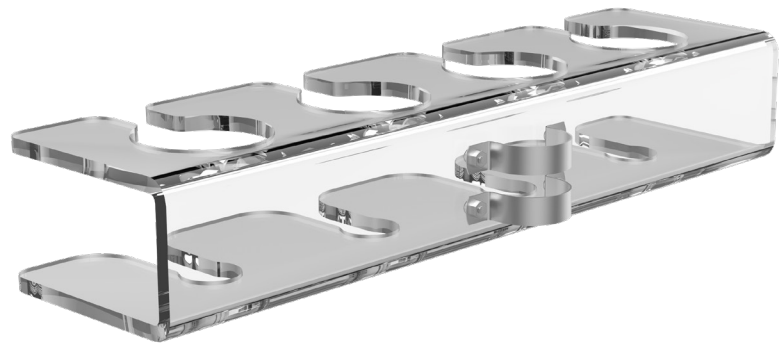
- Sturdy acrylic holder
- C-clamp attaches to any 1" diameter pole
- Compatible with all CTA mobile floor stands

Specifications:

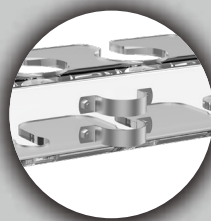
- Dimensions: Overall 14-7/8"L x 3-7/8"W x 2-1/2"H
- Weight: 1 lb 2.2 oz

Package includes:

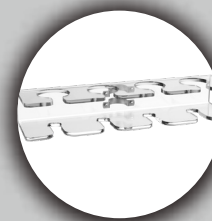
- (1) Probe holder
- (1) Set mounting hardware



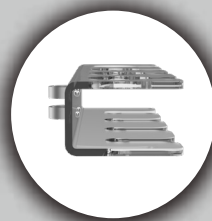
This acrylic probe holder is a small-but-mighty add-on that neatly stows ultrasound equipment – including everything from long intracavity, large 4D OB standard size probes to narrower MSK probes. This rack attaches to standard medical cart poles via one simple clamp. It works seamlessly with CTA Digital’s popular Medical Mobile Floor Stand with Heavy-Duty Gooseneck and Paragon Enclosure, making this component the ideal accessory for all hospital radiology tasks.



Sturdy Clamp Mount



Multi-Rack Design for Multiple Pieces of Equipment



Compact and Lightweight

	Quantity	Width	Height	Depth	Weight	UPC Barcode
Packaging	-	-	-	-	-	656777018634
Master	-	-	-	-	-	10656777018631