

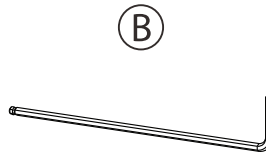
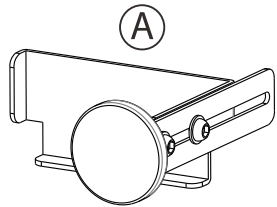


ID & Card Holder for Card Scanning w/ Magnetic Attachment (Black)

ADD-IDMAG

INSTRUCTION - MANUAL

CONTENTS:

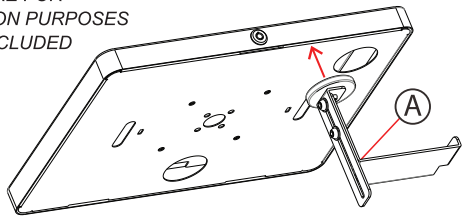


M5 Allen Key (1)

INSTALLATION:

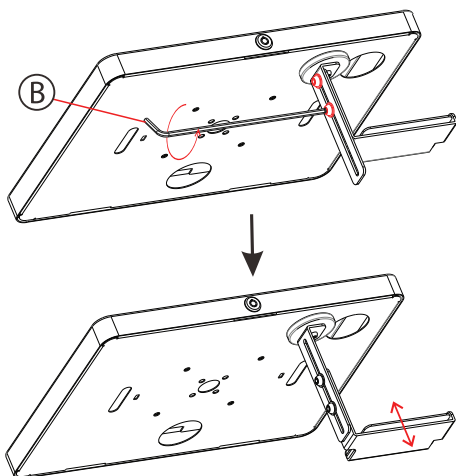
1. Attaching Holder

****ENCLOSURE FOR ILLUSTRATION PURPOSES AND NOT INCLUDED**



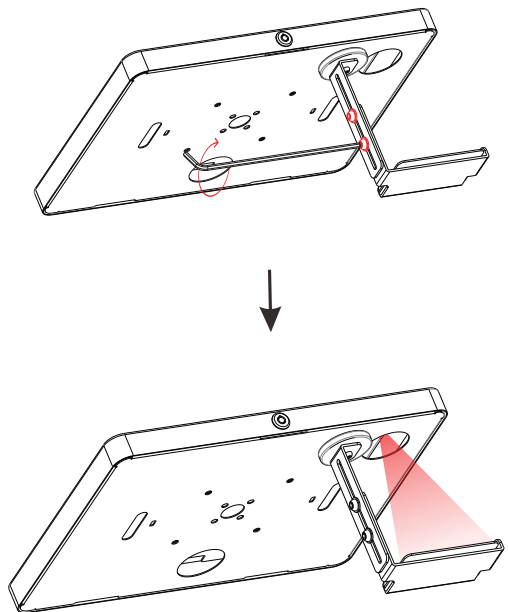
1A. Magnetically attach holder (A) to CTA Digital enclosure (not included) or compatible item as illustrated above. Be sure to place where the camera opening is located for the intended use.

2. How to Adjust Range



2A. Located the screws on the side of the holder. Using provided tool (B), rotate to loosen the screws. This will allow for an adjustability range. Extend or retract the range until preferred setup.

3. Completing Setup



3A. Take the provided tool (B) and rotate side screws until securely tightened. Place ID or Card on the holder and you're ready to go.