

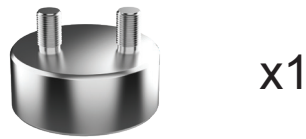


Floor Stand Add-On For Dual Goosenecks

ADD-GNA2

INSTRUCTION - MANUAL

CONTENTS:



INSTALLATION:

***Phone, Tablet and Floor Stand Not Included
For Illustration Purposes Only*



1. Screw on goosenecks counterclockwise from top and floor stand from bottom until firmly secured.