



ADD-CRH

# Universal Card Reader Holder For Readers from 3"-5.25"

## Universal Card Reader Holder

This Universal Card Reader Holder can be easily attached to all CTA Metal enclosures or any metal surface by a super strong adjustable magnetic pad. The card reader holder is width adjustable to fit different size card reader machines. It's perfect for POS at any restaurant, coffee shop or retail store.



### Features:

- The Universal Card Reader Holder allows for various mounting orientations
- Adjustable width to fit different size card readers. Suitable for credit card readers from 3" to 5 1/4".

### Specifications:

Dimension: 3.2 x 6.7 x 0.8"

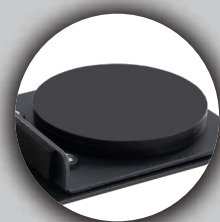
Weight: 1.0lbs

### Package includes:

- (1) Universal Card Reader Holder
- (1) Set of hardware



Adjustable to Fit a Variety of Holders



Heavy-Duty Magnet for Flexible Solutions



Compact Design for Optimal Locations

	Quantity	Width	Height	Depth	Weight	UPC Barcode
Packaging	-	-	-	-	-	656777018061
Master	-	-	-	-	-	10656777018068