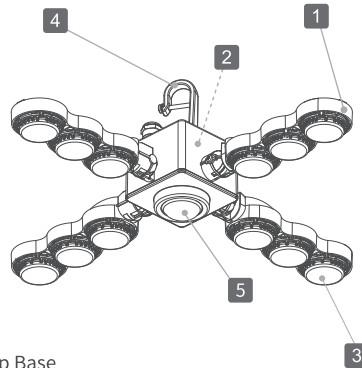


LED Wing Light User Guide

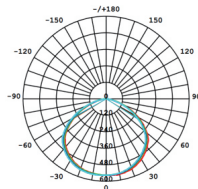


Product overview



1. Lamp Base
2. Power Supply Driver
3. LED Light Source
4. Hanging Hook/Screw Base
5. Infrared Induction Probe

Light distribution curve



Technical data

Model:	C21FS-AE-60W-IR (Lifting Mounting) C21FS-AE26-60W-IR (Screw Mounting) C21FS-AE27-60W-IR (Screw Mounting)
Rated input:	100 - 277 V~, 50/60 Hz
Rated power:	60 W
LED light source (Qty.):	12
Rated current:	0.66A
Beam angle:	60°/120°
Power factor:	0.9
Color rendering index:	80
Color temperature:	5000 K
Operating ambient temperature:	-10 - +40 °C
Operating ambient humidity:	10 - 95% RH
Lifespan:	50000 h
Lamp socket:	E26/E27
Mounting method::	Screw Mounting / Lifting Mounting
Color:	Bronze
Net weight:	Approximately 1.0 kg
Dimensions (L x W x H):	AE: approx. 417 x 417 x 160mm (unfolded) approx. 149 x 149 x 160mm (folded) AE26/AE27: approx. 417 x 417 x 112mm (unfolded) approx. 149 x 149 x 120mm (folded)

SANSI

Warranty & Contact

5-year warranty

Email: service@sansitech.us

Web: www.sansiled.com

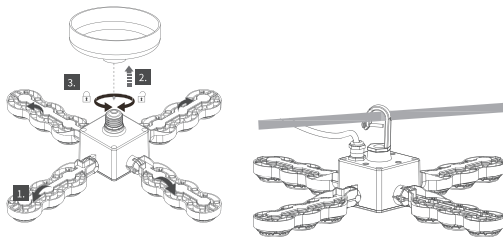
Installation

Use the Lamp Socket

⚠ NOTE: Tighten the bolts, nuts and all fastening sets. Do not overtighten these fastening sets.

⚠ NOTE: Ensure the voltage given on the rating label / in the instruction manual complies with the power supply.

1. Slightly unfold the light base a bit if necessary for easy installation.
2. Align the screw base with the lamp socket and then screw the product onto it (step 2 and 3). Do not overtighten the screw base.
3. Adjust the lamp base to the desired angle (0-90 °) and ensure that the lamp is in a horizontal position.



Use the Lifting Rope

Use a lifting rope to lift the lamp if a hook is not suitable for a bar or beam. (The style and specification of the lifting rope may vary slightly depending on the actual shipment and design changes)

Operations

There are two working modes of this lamp: normal mode and infrared mode.

- Normal Mode: the lamp always keeps on with 100% brightness.
- Infrared Mode: the lamp keeps on with approximately 20% brightness when no human movement sensed and turns on with 100% brightness once sensed human movement. Again the lamp returns to 20% brightness when no more human movement sensed. Under this mode, if turn off the lamp and turn on again after 5 seconds, the lamp will be on with 100% brightness and stayed for 30 seconds and then turned back to low light status.

Note:

Mode switching can be achieved by using the On-Off-On action. Please note that, this action should be done in about 5 seconds. When the light source flashes three times and stays in low light status (20% brightness) indicating the mode switching is successful; Otherwise the mode switching fails and the lamp stays in the original status.

Safety warnings

1. The product is suitable for indoor plant growth lighting, e.g greenhouses, plant factories, plant growth rooms, plant cultivation cabins, captures etc.
2. Read the instruction manual thoroughly before first use. Follow all the safety instructions and information.
3. Do not place any objects on the product. Mechanical loads may damage the product.
4. Do not cover the product e.g with paper or textiles.
5. Risk of burns! Do not touch the light source or the housing during use.
6. Ensure the voltage given on the rating label or in the instruction manual complies with the power supply.
7. Do not continue to use the product if the products or components are damaged or the product does not work properly.
8. Do not open the housing of the product without authorization; Do not insert fingers or other objects into product gaps.
9. Do not stare at the operating light source or direct the beam at other people or animals to prevent eye damage.
10. Assemble the product according to the intended use and as described in this manual.
11. Do not assemble the product in adverse ambient conditions or in rooms where heat sources, hot steam, corrosive gas, flammable gas, vapors or dust are present.
12. Make sure that the mounting surface (e.g. ceiling, beam) can support its weight when installing.
13. Do not assemble / install the product under live conditions.
14. Do not allow children or pets to swallow and bite products or the accessories, so as to avoid injury or product failure.
15. All internal components of the product cannot be repaired by the user;
16. Do not connect the product into the circuit with dimmer.
17. If the external flexible cable or cord is damaged, it shall be exclusively replaced by the manufacturer, the service center or a qualified specialist to avoid hazards.
18. The light source and power supply driver of this product are not replaceable. When the light source or power supply driver reaches its end of life, the whole luminaire shall be replaced.

