

boss

Your "Go To" Supplier for all things Piping!



Fusion Catalogue

INTRODUCTION

Piping Specialty Supply Service (PSSS), was established in 2012 by Managing Director John Wilton. With some 30+ years' experience servicing & supporting the Australian Pipeline and construction sectors, John leads a small dedicated & committed team, proud to be the 'Go-To' supplier for their clients.

Piping Specialty Supply Service sells and hires an extensive range of equipment, tooling, and consumables.

Equipment sold or hired can be used across the 'whole of life' of a pipeline i.e., Through:

- Pipeline Construction
- Pipeline Maintenance
- Pipeline Preservation

If you need equipment, tooling, or consumables for these segments, PSSS is your first point of call!

PSSS proudly represents their supply partners including:

Axis, CDI, DMI, Dyna Torque - Lone Star, Enerpac, SRJ, Guardian, Hy-Ram, Mirage, Pipeline Innovations, Royal Oil and Gas - Fast Fusion, Rosen, Sawyer Mfg, SPC, SPX and many more!

With an ongoing commitment to innovation, manufacturing and an ever-expanding product range, PSSS is a dedicated 'solutions' focused supplier of high-quality equipment and tooling, combined with a top team dedicated to ensuring you get what you need when you need it!

MOBILE FUSION TRAC (MFT)



ALL WEATHER

Fusing within a cab keeps you out of the elements – anything from snow to wind to rain stays outside and away from the fusion joint and the operator.

70% MORE PRODUCTIVE

By speeding the pipe fusion cooling process, the MobileFusion Trac is proven to be much more productive than conventional fusion.

EXPERIENCE INNOVATION WITH FASTLOAD®

Our FastLoad® self-loading front boom makes HDPE pipe fusion a one-person operation. Load the pipe easily with no extra heavy equipment on site to load or hold the pipe in place.

A SAFER FUSION SITE

By protecting the fusion operator in a cab and using the FastLoad boom, you're removing heavy equipment and you're creating a safer fusion site.

No matter how extreme the weather, Fast Fusion MobileFusion Trac (MFT) machines handle the pipe effectively without the use of tents or containers. The pipe is strung joint-to-joint on the right-of-way and the MFT machine moves forward straddling the pipe. The FastLoad® self-loading front boom is used to pick up the pipe and load the pipe into the fusion machine. The machine welds the pipe using industry-known pipe fusion equipment and the fully automatic Fast Fusion® weld cooling temperature control is applied. The machine then simply moves through the pipe to the next pipe joint to be joined. It all comes down to time saved – money earned. It is the safest way to fuse pipe!

MOBILEFUSION TRAC® 12 (MFT)

- ✔ Item For Sale ✔ Item For Hire

For 4" to 12" OD (110 to 315mm) HPDE Pipe

- Caterpillar® engine provides the power to move through the pipes assuring confidence of a quality power plant.
- Track pads are rubber, yielding less footprint disturbance.
- Eliminates any need for a tent, giving assurance of quality welds and no wasted time.



MOBILEFUSION TRAC® 20

- ✔ Item For Sale ✔ Item For Hire

For 6" to 20" OD (160 to 500mm) HPDE Pipe

- The MFT20 has a user-friendly design, meaning one operator in the cabin is all that's needed. No extra personnel or heavy equipment. Additionally, the "Quick Change" design inside the cabin allows any fusion equipment supplier components to be used.



MOBILEFUSION TRAC® 36

- ✔ Item For Sale ✔ Item For Hire

For 6" to 36" OD

- The design incorporates top-of-the-line auxiliary components like Caterpillar® engines and drive systems.
- Fully automatic system equipped with a display screen with operator input keys for the Fast Fusion® weld bead temperature control. No guesswork.
- A full exterior lighting package





✔ Item For Sale

✔ Item For Hire

Cool Pack 36
4" to 36" OD - (110 to 900mm)

Cool Pack 48
4" to 48" OD - (110 to 1200mm)

Cool Pack 500
4" to 20" OD - (110 to 500mm)

Size Range to Accommodate 4" - 80"



Sizes are available to accommodate from 4" (110mm) up to 80" OD (2000mm) HDPE pipe. Cool Pack® machines include Fast Fusion® technology for weld bead cooling plus a diesel engine. The complete innovative package allows the operator to DOUBLE the welds per hour by reducing fusion welding costs by 50%.

Double Productivity



- Cool Pack® machines are self-contained and compact, with the ability to be easily transported to the field.
- Operator-friendly
 - The connection time of the Cool Pack® to the fusion machine takes only minutes.
 - Skid mounting allows Cool Pack® to move along with the butt fusion welding equipment.
- We have created an easy way to improve your productivity.

Compressor Pack & Accessory Kit



- Compressor pack and accessory kit available
- Kit includes an umbilical connection to the diffuser box that applies air to the circumference of the HDPE weld.
- The Fast Fusion® Controller allows the operator to set the pipe weld cooling specifications for a guaranteed weld each time.



SELF-CONTAINED DIESEL ENGINE

All TracStar fusion machines are powered by self-contained, liquid-cooled, or turbo-diesel engines. Each machine's engine has a fuel tank and an operational capacity to perform a full day's work bringing fuel efficiency to the job site.

DITCH READY

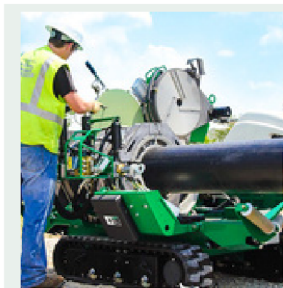
The TracStars incorporate an interchangeable 4-jaw carriage, which can be easily removed for close-quarter, in-ditch fusion. For tight installations, the outer fixed jaw and skid can be removed from the carriage converting it to a 3-jaw carriage for an even more compact fusion unit.

TACKLES THE TOUGHEST TERRAIN

TracStar's rugged, dual rubber tracks bring the best in all-terrain mobility to job sites. They can travel easily across mud, loose soil, snow, and grades of up to 30%. The track system features a zero-degree turning radius while evenly dispersing the weight which keeps it from sinking in the soft soil.

Item For Sale
 Item For Hire

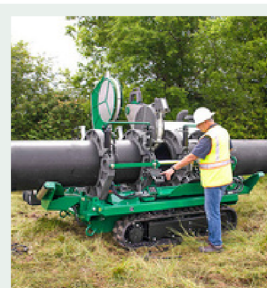
The TracStar® fusion machines are the number one choice on jobsites fusing long pipelines with their ease of maneuverability and freedom of movement. Self-propelled via rubber crawler tracks, these vehicles can traverse rough terrain and grades up to 30%. All of the TracStars are self-contained with all of the necessary electrical equipment on board. The carriage is mounted on the track-driven chassis for easy pipe loading and movement along the pipe. The carriage is also removable so that pipe can be fused on special applications in the ditch.



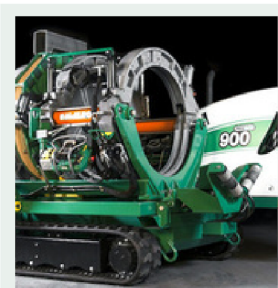
Tracstar 500
6" IPS - 20" OD (160MM - 500MM)



Tracstar 618
6" IPS - 18" OD (160MM - 450MM)



Tracstar 630
8" IPS - 24" OD (225MM - 630MM)



Tracstar 900
6" IPS - 20" OD (160MM - 500MM)

HYRAM WELDMASTER

- Integrated RFID reader – monitoring training status & Operator ID & USB Connectivity
- Touchscreen – 7" TFT Intuitive User Interface
- Menu-driven data entry plus touchscreen 'QWERTY' Keypad Bluetooth Connectivity for smartphone apps and BDI tool Embedded GPS for precise weld location stored with each joint record
- 'Scroll-back' On-screen review of all joint data
- Simple Text and Animated Graphic representation of 'Next-step'
- in welding cycle
- Internal Memory for in excess of 1 million Joint Records
- Option of bespoke Joint Data Analysis Software
- Programmed with UK and International Welding Standards Programmed for 3 different types of Plastic Materials
- Automatic 'Dummy' Weld Cycle when welding to the WIS standard Early Warning Error Messages
- On board Diagnostics software – Graphically driven for simplicity Customisable for welding of non-standard or 'special' pipe

Item For Sale
 Item For Hire






MCELROY INSERTS	MCELROY DATA LOGGER 7
	
<p>The surface is hardened for longer life and are serrated for maximum grip.</p>	<p>Tablet, transducer, machine mount, micro SD card, removable battery, screen protector, carrying case.</p>
DITCH KIT	LOW PROFILE ROLLERS
	
<p>The lift kit is only for the lifting of the generator, not the entire machine.</p>	<p>Pipe diameter range 4" IPS - 18" IPS (100mm - 450mm) Load Capacity: 907.1 Kg per pair</p>
PIPE SUPPORT STANDS	STUB END HOLDER
	
<p>Height is adjustable to properly support, position and align pipe to be fused.</p>	<p>Holds a stub end firmly in place while fusing pipe.</p>

FAST FUSION - FULL RANGE OF SPARE PARTS AVAILABLE

RELATED EQUIPMENT

ROLLER SLINGS	KWIK ZIP	HORIZONTAL ROLLERS	PIPE CONES
			
<p>Pipe size range of 50mm-1200mm Lightweight for ease of use & transport</p>	<p>A non corroding, non-metallic casing spacer for Pipe-in-Pipe</p>	<p>Ideal for moving and maneuvering pipe</p>	<ul style="list-style-type: none"> Convenient sizes: <ul style="list-style-type: none"> 2"-8" 8"-12" 12"-36" 36"-48" Hire or buy
SQUEEZE OFF UNITS	LINE TAMER TRAILER	REPAIR CLAMPS	
			
<p>Manual & Hydraulic available in sizes from 16mm - 500mm</p>	<ul style="list-style-type: none"> Horizontal type with 32-75mm capacity Vertical type with 90-160mm capacity 	<p>Single, Double & Multi-part repair clamps, suitable for pipes from 50mm - 600mm.</p>	
PIPE END CAPS	INTERNAL & EXTERNAL DEBEADER	WELDING WIPES	
			
<p>Available for steel and poly pipes in a variety of sizes</p>	<p>Variety of sizes available in standard range.</p>	<p>Used to reduce the risk of a failed weld by cleaning potential contaminants</p>	

ELECTROFUSION WELDERS	RE-ROUNDING TOOLS	HYDRAULIC RE-ROUNDING TOOLS
		
<p>Suitable for low, medium, and high-pressure PE or PP pipework systems from 16mm to 400mm diameter (1/2" to 16").</p>	<p>Available in sizes 63mm - 400mm</p>	<p>Available in sizes 400mm - 710mm</p>

PIPE SCRAPERS & PEELERS		
		
<p>Available in a range of sizes</p>	<p>Available in sizes from 20mm - 315mm</p>	<p>Available in sizes from 20mm - 63mm</p>

ALIGNMENT CLAMPS		
		
<p>Available in a range of sizes</p>		

PSSS PROUDLY REPRESENTS...





Contact Information

Ph: 1300 794 096

Email: Sales@psssa.com.au

Website: www.psssa.com.au