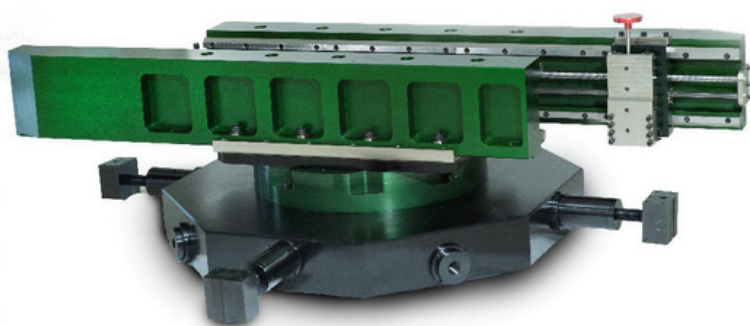


Bore Mount Flange Facing Machine 28 “-84” (711mm –2133mm)



FEATURES

- Heavy duty precision construction
- High torque planetary gear drive
- 6 continuous groove bi-directional facing feeds for a gramophone finish (ASME Standard).
- Auto boring feeds
- Heavy duty adjustable base clamping bolts and extensions for quicksetting and site operation
- Large section hardened slide ways to maintain long term accuracy
- Twin Arm Counterbalance –Doubles up as Milling Rail. Can use independently for milling applications
- Retractable Facing Arms
- 360 degree swivel tool post for groove details

SPECIFICATION

Min Facing Diameter	28” (711mm)
Max Facing Diameter	84” (2133mm)
Min Clamp Diameter	28” (711mm)
Max Clamp Diameter	72” (1828mm)
Tool Post travel	4” (102mm)
RPM	24
Pneumatic	2.7 Kw @ 6 Bar 80 CFM

W&Ds

Machine Weight	455 kg		1001lbs
Big base Assy	250 kg		550lbs
Shipping Box 1	1100 kg		2420lbs
Shipping Dimension	Length 208cms	Width 118cms	Height 90cms

FACING FEED RATES	IN/REV	MM/REV	GROOVE / INCH
1 -In	0.039”	0.31mm	81
1 -Out	0.021”	0.55mm	46
2 -In	0.018”	0.46mm	55
2 -Out	0.031”	0.79mm	32
3 -In	0.023”	0.60mm	42
3 -Out	0.039”	1.00mm	24

An internally mounted flange facing machine capable of producing a continuous groove gramophone finish to ASME Standard along with the capability to auto feed groove details.

The machine is supplied complete with the following items;

- ☐ All clamping bases, mounting feet and extensions
- ☐ Toolkit including tools and inserts
- ☐ Air filter lubricator
- ☐ Hose connection
- ☐ Storage / shipping box
- ☐ Packing list and manual

