



KANSA

Tools & Materials for
Decorative Stained Glass

KANSA

The Flour Mill, Wath Road, Elsecar, Barnsley, South Yorkshire, S74 8HW

Stained Glass Catalogue

Kansa are the main UK Importers and distributors of stained glass, tools and materials from America, Europe and the Far East. Established in 1976 and based at our large premises for over 38 years.

The products selected for this catalogue have been specially chosen as the very best value for money as well as high quality and reliability. We are main agents for Wissmach and Dynasty, giving us a wide range of high quality glass suitable for all types of stained glass work.

Sample sets are available for each glass supplier, details of these can be found on each supplier page throughout the catalogue. The Dynasty Ring Mottles and Ice glass however, can not always be truly represented by the samples due to their "Art Glass" nature.

Our Objective

To provide a fast, friendly and efficient service and aim to keep in stock all products listed in the catalogue.

Most products are maintained at the prices quoted in the price list, with the exception of lead and solder which may vary. The pictures in this catalogue are for illustrative purposes only and the goods supplied may differ slightly from those shown.

We have large showrooms displaying glass colours and materials, so customers can select their own products with the help of our experienced sales staff. If you are collecting your order on a Saturday (we are only open the first Saturday of each month) we recommend that you telephone or email your order in advance to save time as it can get very busy.

How To Order

Shop Online @ www.kansacraft.co.uk

Telephone: You can telephone your order on 01226 747424.

We will make every effort to ensure that telephone orders are despatched correctly, however, we will only take responsibility when the order is confirmed in writing before despatch.

E-mail: You can e-mail your order to stainedglass@kansacraft.co.uk

Collection: We are open: Monday to Friday - 9:00am to 5pm (except Bank Holidays).
The first Saturday of every month - 10am to 2pm (except the first Saturday in May which will change to the second Saturday due to the May Day Bank Holiday).
Please note we are closed ALL Saturdays throughout August.

Payment: We accept cash and the following credit cards:
Visa, Visa Delta, MasterCard, Maestro, Solo and Electron.

Returns: Goods can only be returned for credit within 10 days of purchase and with prior arrangement with our sales staff. A valid receipt must be provided and all returned items are subject to a 20% restocking fee. The cost of return must be borne by the customer and damage during transit is at the customer's own risk.

Delivery

We aim to send out all orders on the day we receive them if the order is placed before 2pm, and these should be delivered the following working day except small orders sent by post.

Full sheets of glass are despatched in wooden crates. A tail lift delivery can be arranged when ordering, please request this option if required. Please see price list for UK mainland delivery charges and enquire for UK offshore and export delivery charges.

Full Sheets of glass are packed in wooden crates (minimum order of 6 sheets or an additional carriage charge will apply) strapped to pallets to ensure minimum breakage. Full crates hold a maximum of 32 sheets. All types of glass can be mixed in a crate.

For safety reasons we prefer not to send single sheets / half sheets of glass in a crate, however, if necessary these can be cut to fit a box (maximum order of 6 sheets). In this case we cannot guarantee against breakage.

Contents

1	Ordering & Delivery Information
2	Contents
3	Wissmach Aqualite Glass
4	Wissmach English Muffle Glass
5	Wissmach Corella Classic Glass
6	Wissmach Various Glass
7	Wissmach Various Glass
8	Dynasty Cathedral Glass
9	Dynasty Clear Textures & Herringbone Glass
10	Dynasty Opalescent Glass
11	Dynasty Ring Mottles & Ice Glass
12	Clear Glass & Clear Float
13	Clear Glass & Mirror
14	Cutting Glass - Cutters & Cutting Tools
15	Soldering - Irons & Equipment
16	Tiffany Technique - Copper Foil & Tools
17	Leaded Work - Tools & Materials
18 / 19/ 20	Lead Came - Mommer Lead Came & Strengthening
21	Grinders & Grinding
22 / 23	Decorative Items - Rondels, Jewels, Crystals & Nuggets
24	Bevels - Standard Shapes & Pencil Bevels
25	Bevels - Bevel Clusters
26	Miscellaneous Items
27 / 28	Glass Painting - Brushes & Paints
29	Paragon Kilns
30	Lamp Bases - Fan Bases, Figures & Large Deco Lady
31 / 32	Lamp Bases - Small & Medium Size.
33	Lamp Fittings - Vase Caps, Harps, Finials & Multi Bulb Fittings
34	Lamp Fittings - Pendant Suspensions, Chain, Cable & Lampholders
35	Lamp Fittings - Brass Pressings
36	Lamp Fittings - Brass Channel & Banding
37	Our Showrooms
38	Local Attractions
Back Cover	Premises & Map

Wissmach Aqualite

A smooth, water like cathedral glass with a medium obscurity, available in a range of pale tints and colours. From the Wissmach factory in West Virginia USA. 3mm uniform thickness.

Can be Laminated to float glass.



AQ100SDY
Clear Seedy
**Also available as double sheet*



AQ100
Clear
**Also available as double sheet*



AQ110
Very Pale Amber



AQ1102
Pale Amber



AQ1108
Mid Amber



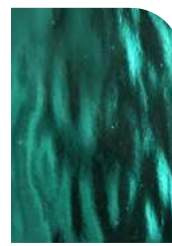
AQ121
Pale Green



AQ125
Emerald Green



AQ526
Lime Green



AQ523
Medium Turquoise



AQ5232
Pale Turquoise



AQ130
Very Pale Blue



AQ132
Pale Blue



AQ140
Pale Rose



AQ142
Medium Purple



AQ5437
Violet



AQ591
Light Peach / Bronze



AQ598
Medium Peach / Bronze



AQ191
Champagne Pink



AQ171
Red / Orange

Wissmach Aqualite Cathedral Glass Available in the Following:

Full Sheet
813 x 1066mm
0.87M²
(32" x 42")

***Double Sheets**
813 x 2132 mm

Half Sheet
813 x 533mm
0.435M²
(32" x 21")

Quarter Sheet
406 x 533mm
0.22M²
(16" x 21")

Handicraft
203 x 266mm
0.05M²
(8" x 10½")

Wissmach Aqualite
Sample Set;
(SAMPAQ)
All Sample Pieces:
76 x 51mm
(3" x 2")

Wissmach English Muffle

A reproduction of the textured cathedral glass used in Victorian & Edwardian leaded windows.
From the Wissmach factory in West Virginia USA. 3mm uniform thickness.

Can be Laminated to float glass.



E4901B
Clear



E4906B
Flaxen Tint
(Pale Gold)



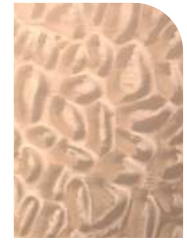
E4910B
Apricot Beige



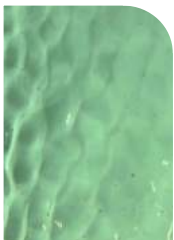
E4916B
Noble Brass
(Mid Amber)



E4917B
Regency Gold
(Pale Amber)



E4920B
Champagne



E4903B
Cornwall Green
(Pale)



E4907B
Sage Green
(Mossy Green)



E4914B
Sussex Green
(Mid Olive)



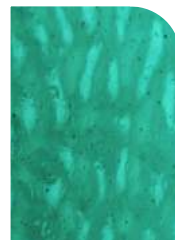
E4915B
Salem Green
(Pale Olive)



E4911B
London Fog
(Pale Grey)



E4904B
Windsor Blue
(Green/Blue)



E4908B
Aqua Mist
(Sea Green)



E4909B
Princess Blue
(Very Pale)



E4922B
Midnight Blue
(Dark Blue)



E4902B
Dusky Rose
(Rose/Brown)



E4905B
Scottish Heather



E4918B
Victorian Violet



E4919B
Clover Blossom



E4921B
Rose Red
(Soft Faded Red)

Wissmach English Muffle Cathedral Glass Available in the Following:

Full Sheet
813 x 1066mm
0.87M²
(32" x 42")

Half Sheet
813 x 533mm
0.435M²
(32" x 21")

Quarter Sheet
406 x 533mm
0.22M²
(16" x 21")

Handicraft
203 x 266mm
0.05M²
(8" x 10½")

Wissmach English Muffle
Sample Set;
(SAMPEM)
All Sample Pieces:
76 x 51mm
(3" x 2")

Wissmach Corella Classic

A reasonably priced, slightly textured cathedral glass, for general use.
From the Wissmach factory in West Virginia USA. 3mm uniform thickness.
Can be Laminated to float glass.



CX100
Clear



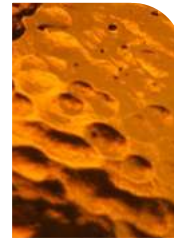
CX410
Clear / Amber
Streaky



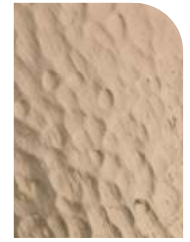
CX110B
Very Pale Amber



CX111B
Pale Gold



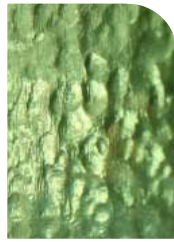
CX112B
Dark Amber



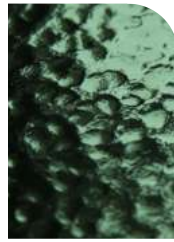
CX519B
Apricot



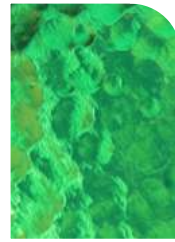
CX120B
Very Pale Green



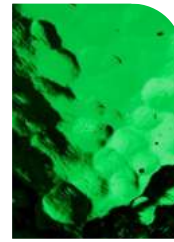
CX121B
Pale Green



CX123B
Sage Green



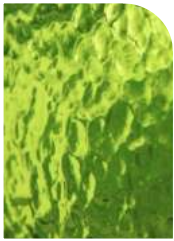
CX124B
Mid Green



CX125B
Emerald Green



CX523B
Teal Green



CX526B
Green Yellow



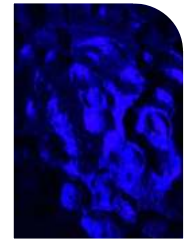
CX130B
Very Pale Blue



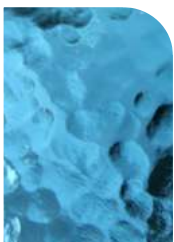
CX132B
Pale Blue



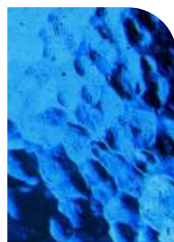
CX133B
Mid Blue



CX139B
Very Dark Blue



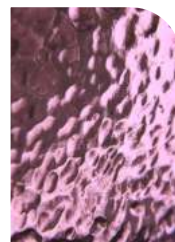
CX532B
Sky Blue



CX533B
Bright Blue



CX140B
Pale Rose



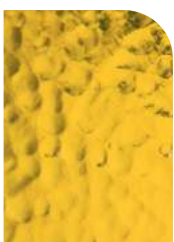
CX141B
Rose



CX142B
Purple



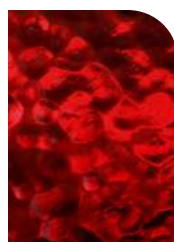
CX5437B
Dark Violet



CX161B
Yellow



CX171B
Orange



CX152B
Red



CX191B
Champagne

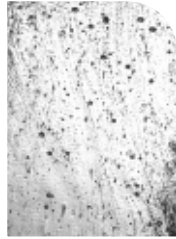
Wissmach Various

Restoration Cathedrals and Streaky Cathedrals from the Wissmach factory in West Virginia USA.
3mm uniform thickness.

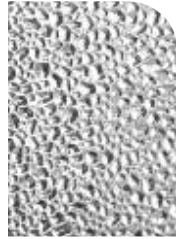
Can be Laminated to float glass.



W100RB
Clear Restoration



W100SDYB
Clear Seedy



WD100B
Clear Dewdrop



WF100B
Clear Florentine
(Muranes)



W410B
Amber / Clear
Streaky



W4120B
Green / Brown /
Clear Streaky



W420B
Green / Clear
Streaky



W430B
Blue / Clear
Streaky



W4320B
Blue / Green /
Clear Streaky



W4430B
Purple / Blue /
Clear Streaky



W450B
Red / Clear
Streaky

Wissmach Aqualite, Muffle, Corella & Wissmach Various Glass Available in the Following:

Full Sheet
813 x 1066mm
0.87M²
(32" x 42")

Half Sheet
813 x 533mm
0.435M²
(32" x 21")

Quarter Sheet
406 x 533mm
0.22M²
(16" x 21")

Handicraft
203 x 266mm
0.05M²
(8" x 10½")

Wissmach Various
Sample Set;
(SAMPW)
All Sample Pieces:
76 x 51mm
(3" x 2")

Wissmach Various

Opalescent and Wispy Glass from the Wissmach factory in West Virginia USA. 3mm uniform thickness.

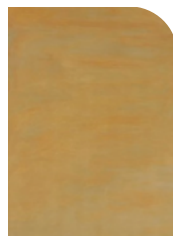
Can be Laminated to float glass.



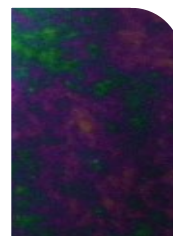
W200B
Dense White
Opal



W2001B
Onyx White
(Translucent)



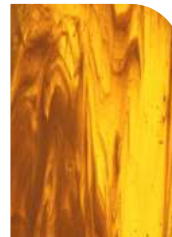
W315B
Amber White
Opal



W1188B
Iridised Dense
Black Opal



W309B
White on Clear
Wispy



W31902B
Pale Amber
White Wispy



W607B
Goldfish
Translucent



W832B
Light Turquoise
Translucent

Wissmach, Corella Classic & Corella Various Glass Available in the Following:

Full Sheet
813 x 1066mm
0.87M²
(32" x 42")

***Double Sheets**
813 x 2132 mm

Half Sheet
813 x 533mm
0.435M²
(32" x 21")

Quarter Sheet
406 x 533mm
0.22M²
(16" x 21")

Handicraft
203 x 266mm
0.05M²
(8" x 10½")

Wissmach Various
Sample Set;
(SAMPW)

All Sample Pieces:
76 x 51mm
(3" x 2")

Dynasty Cathedral Glass

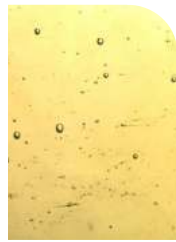
An old fashioned glass with excellent cutting properties. 3mm uniform thickness. Made in China.
Ideal for restoration work, having good clarity yet obscured with random seeds and reams.



D100
Clear



Di100G
Clear Iridised
Granite Back



D110
Very Pale Amber



D1101
Pale Amber



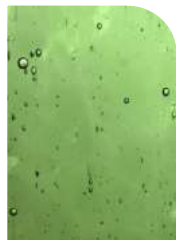
D111
Mid Amber



D112
Dark Amber



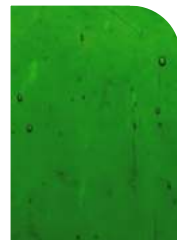
D120
Very Pale Green



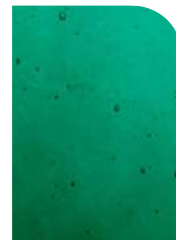
D1204
Pale Leaf Green



D124
Mid Green



D125
Dark Green



D523
Teal Green



D526
Lime Green



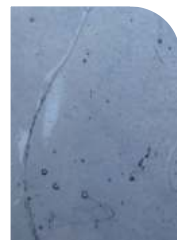
D5283
Light Sage Green



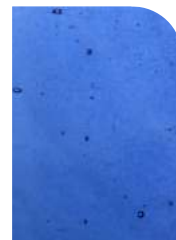
D5286
Dark Sage Green



D130
Very Pale Blue



D1301
Pale Blue



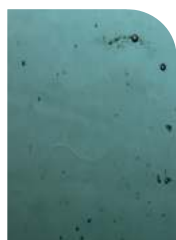
D132
Mid Blue



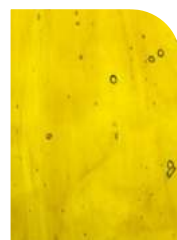
D139
Dark Blue



D532
Sky Blue



D5231
Turquoise



D161
Yellow



D171
Orange



D155
Red



D140
Pale Rose



D1406
Light Rose



D141
Rose



D543
Purple

Dynasty Clear Textures

Clear cathedral patterned glass with excellent cutting properties. 3mm uniform thickness. Made in China. Ideal for restoration work, having good clarity yet obscured by different textures and some seeds.



D100P
Clear Orange Peel
(heavily obscured)



D100MH
Clear Medium Hammered



D100FR
Clear Fine Ripple



D100SM
Clear Stretched Muffle Style

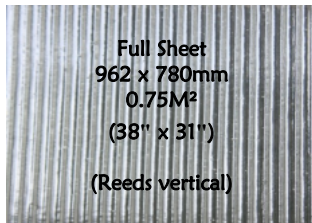


D100CH
Clear Fine Irregular Chord



D100QR
Clear Quarter Inch Reeded
(with some bubbles)
***Also available as double sheets**

In addition to the stock sizes listed below, Dynasty Clear Quarter Reeded Glass is also available in the following:



Dynasty Herringbone

Cathedral glass with a heavy texture to obscure backgrounds. 3mm thick. Made in China. Perfect for windows and lamps.



D100HG
Clear Herringbone



D111HG
Amber Herringbone



D124HG
Green Herringbone



D532HG
Sky Blue Herringbone



D141HG
Rose Herringbone



D543HG
Purple Herringbone

Dynasty Cathedral Glass, Clear Textures & Herringbone Available in the Following:

<p>Full Sheet 962 x 780mm 0.75M² (38" x 31")</p>	<p>Half Sheet 780 x 481mm 0.375M² (31" x 19")</p>	<p>Quarter Sheet 481 x 390mm 0.19M² (19" x 15")</p>	<p>Handicraft 260 x 240mm 0.06M² (10" x 9½")</p>	<p>Dynasty Cathedral Sample Set: (SAMPDC) All Sample Pieces: 76 x 51mm (3" x 2")</p>
---	--	--	---	--

Dynasty Opalescent Glass

Opal glass with good light transmission and excellent cutting properties.
3mm uniform thickness. Made in China.



D305
Swirled White



D31507
Pale Amber
White Wispy



D315
Amber White



D325
Green White



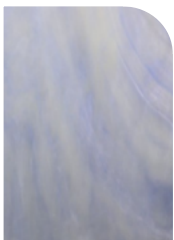
D327
Green
Translucent



D622
Two Green Mix



D623
Blue Green



D335
Blue White



D633
Two Blue Mix



D833
Sky Blue
Wispy



D3396
Dark Blue
Wispy



D365
Yellow White



D375
Orange White



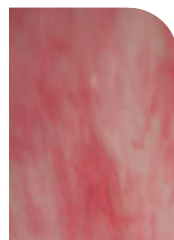
D675
Red Orange



D355
Medium Red



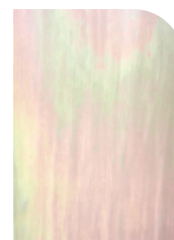
D3496
Dark Purple
Wispy



D395
Pink White



D188
Black



D1305
White Opal
Iridised



D1315
Amber Opal
Iridised

Dynasty Ring Mottles

Opaque Art Glass with a varying mix of colours, suitable for Tiffany reproduction work.

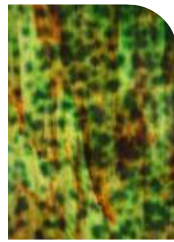
Please note that the colours in "Art Glass" vary throughout the sheets. Samples cannot always show all the colours in the glass.



DMOT1
Amber / Yellow
Ring Mottle



DMOT2
Green
Ring Mottle



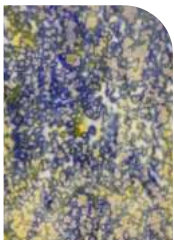
DMOT25
Green / Red
Ring Mottle



DMOT26
Green / Yellow
Ring Mottle



DMOT3
Blue
Ring Mottle



DMOT35
Blue / Yellow
Ring Mottle



DMOT5
Red
Ring Mottle



DMOT7
Orange
Ring Mottle



DMOT9
Pink
Ring Mottle

Dynasty Ice

Perfect for lamp making, obscured glass with no white opal but excellent light transmission.

Please note that the colours in "Art Glass" vary throughout the sheets. Samples cannot always show all the colours in the glass.



DICE1
Light Beige /
Amber Ice Glass



DICE15
Yellow / Brown
Ice Glass



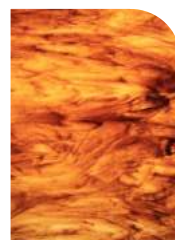
DICE213
Green / Amber /
Blue Ice Glass



DICE215
Green / Yellow /
Amber Ice Glass



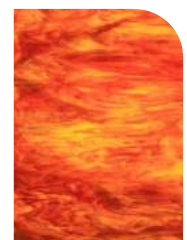
DICE234
Green / Blue /
Purple Ice Glass



DICE516
Red / Amber /
Yellow Ice Glass



DICE615
Yellow / Amber
Ice Glass



DICE75
Orange / Red
Ice Glass

Dynasty Opalescent Glass, Ring Mottles & Ice Glass Available in the Following:

<p>Full Sheet 962 x 780mm 0.75M² (38" x 31")</p>	<p>Half Sheet 780 x 481mm 0.375M² (31" x 19")</p>	<p>Quarter Sheet 481 x 390mm 0.19M² (19" x 15")</p>	<p>Handicraft 260 x 240mm 0.06M² (10" x 9½")</p>	<p>Dynasty Opalescent/ Ring Mottle/Ice Sample Set: (SAMPDO) All Sample Pieces: 76 x 51mm (3" x 2")</p>
---	--	--	---	--

Clear Glass & Clear Float

Our quick look pages for all clear glass from different manufacturers.

Restoration Glass

Restoration Glass is used in listed and period buildings where the glass must look authentic. The movement in restoration glass gives more life to your glazing projects rather than modern float glass.

Georgian Sheet Glass (GEO100) Now that Tatra blown restoration glass is no longer available, we are keeping larger stocks of the kiln treated glass that we make. The resultant glass has a wavy, not quite flat appearance of Georgian and Victorian windows. Optically clear with small imperfections, imitating mouth blown glass. Made at KANSA to a standard sheet size of 1070mm x 535mm and 3mm thickness, but can be cut to size requirements upon request.

Wissmach Clear Restoration (W100R) is the least obscured of any rolled glasses we supply.

Dynasty Restoration (D100) has the look of old fashioned glass with random texture throughout.



GEO100
Georgian Sheet
See Above



Glazed in this lantern shows the deflection of light caused by this glass



W100RB
Wissmach Clear Restoration
See Page 6



D100
Dynasty Restoration
See Page 8



W100SDYB
Wissmach Clear Seedy
See Page 6



AQ100
Clear Aqualite
See Page 3



AQ100SDY
Clear Seedy Aqualite
See Page 3



E4901B
Clear English Muffle
See Page 4



CX100B
Clear Corella
See Page 5



D100MH
Clear Medium Hammered
See Page 9



D100CH
Clear Fine Irregular Chord
See Page 9

Glasses above are graded left to right in clarity, from clear to obscure.

Sheet Sizes for the glass on these pages vary, please see details below or follow the page reference stated.

'St Gobain' Float Glass is available as follows:

Description	Code	Full Sheet (mm)	Half Sheet (mm)	Quarter Sheet (mm)	Handicraft (mm)
2mm Float	CF2	1220 x 915	610 x 915	610 x 457	N/A
3mm Float	CF3	1070 x 535	535 x 535	535 x 268	N/A
4mm Float	CF4	802 x 638	401 x 638	401 x 319	N/A
6mm Float	CF6	802 x 562	401 x 562	401 x 281	N/A
4mm Low Iron (no green hue)	CFL4	802 x 562	401 x 562	401 x 281	N/A

Clear Glass & Mirror

Our quick look pages for all clear patterned glass and mirror from different manufacturers.

Mirror Glass

As well as regular mirror glass (CFM) we now stock mirror glass with antique distressed effect (CFMA), both are 4mm thick.

See images right.



CFM
4mm Thick
Mirror Glass
See Table Below



CFMA
4mm Thick Antique
Distressed Mirror Glass
See Table Below



D100SM
Clear Stretched
Muffle Style
See Page 9



GC3
3mm Thick
Glue Chip
See Table Below



GC5
5mm Thick
Glue Chip
See Table Below



100HR
Clear Half Inch
Reeded
See Table Below



D100P
Clear Orange Peel
See Page 9



D100FR
Clear Fine Ripple
See Page 9



Di100G
Clear Iridised
Granite Back
See Page 8



WF100B
Clear Florentine
(Muranese)
See Page 6



WD100B
Clear Dewdrop
See Page 6



D100QR
Clear Quarter Inch
Reeded
See Page 9



D100HG
Clear Herringbone
See Page 9

Glasses above are graded left to right in clarity, from clear to obscure.

Sheet Sizes for the glass on these pages vary, please see details below or follow the page reference stated.

Description	Code	Full Sheet (mm)	Half Sheet (mm)	Quarter Sheet (mm)	Handicraft (mm)
Half Inch Reeded	100HR	1070 x 660	660 x 535	535 x 330	268 x 220
3mm Glue Chip	GC3	962 x 780	780 x 481	390 x 481	260 x 240
5mm Glue Chip	GC5	914 x 610	610 x 457	457 x 305	N/A
4mm Mirror	CFM	1220 x 610	610 x 610	610 x 305	N/A
4mm Antique Mirror	CFMA	1070 x 637	535 x 637	535 x 318	267 x 318

Cutting Glass

Cutters and Cutting Tools.

K Star Oil Fed Supercutter *CUT23*

A high quality, low priced tungsten carbide cutter with swivel head.



K Star Replacement Cutting Head *CUT42*



Dragon Oil Fed Cutter *CUT36*

An alternative oil fed cutter, cheaper than the K Star Supercutter.

Grozing Pliers *PLIER23*

Essential all-round pliers with spring loaded jaws.



Cut Running Pliers *PLIER24*

Steel pliers with a cushioned curved jaw adjustable for various thicknesses of glass. Used for repeated breaking of long thin strips.



Plastic Cut Runners *PLIER29*

A less expensive version of the steel cut runners. Made of plastic.



Imperial Pistol Grip Cutter *CUT22*

Self lubricating carbide pistol style cutter - easy to hold, helps to reduce wrist fatigue.



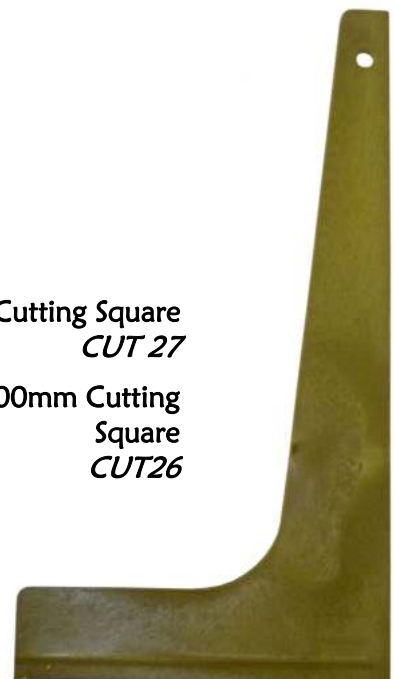
Dragon Circle Cutter *CUT29*

Cut circles from 70mm to 600mm diameter. Turret contains 6 high quality cutting wheels.



450mm Cutting Square *CUT 27*

300mm Cutting Square *CUT26*



Soldering

Soldering Irons and Equipment.

Startec 80Watt Iron SOLD22

High quality, low price point stained glass soldering iron with temperature regulation controller included.

80 watt - a general iron suitable for the hobbyist.
Includes a rheostat for highly accurate and adjustable temperature control.

Also included are 2 tips, one for leadwork (SOLD94) & one for copper foiling (SOLD97).



Startec 100Watt Iron Temperature Controlled Iron SOLD36

High quality, low price point stained glass soldering iron with temperature regulation controller included.

100 watt - a more advanced and higher powered iron for faster work.
Includes a rheostat for highly accurate and adjustable temperature control.

Also included are 2 tips, one for leadwork (SOLD84) & one for copper foiling (SOLD86).

Sal Ammoniac Block SOLD29

For cleaning and tinning soldering iron tips. 10 x 6 x 3cm



Replacement Tips for 80Watt Startec Irons

SOLD94
7mm Lead work tip.

SOLD97
7 mm Copper foil tip.



Replacement Tips for 100Watt Startec Irons

SOLD84
8mm Lead work tip.

SOLD86
8mm Copper foil tip.



Soldering Iron Stand IRON23

Iron stand with built in sponge tray and removable steel liner. Sponge included. Seats all brands of straight iron between 20 - 38mm barrel.

Solder

Available per 1/2kg, kg
or 25kg box.
Approximately
20 sticks per kg.

SOLD42 1/2kg
SOLD28 1kg

Grade C
40% Tin, 60% Lead.

SOLD46 1/2kg
SOLD89 1kg

Grade F
50% Tin, 50% Lead.

SOLD43 1/2kg
SOLD47 1kg

Grade K
60% Tin, 40% Lead.



Replacement Sponge SOLD26

For iron stands.



Flux

50ml Water Soluble Flux FLUX23

Contains small amounts of inorganic acid - Use with care.

200g Flux Crystals FLUX24

Just dilute with approximately 1 pint of water.



Flux Brush BRUSH26

An inexpensive basic brush.

FFP3 Air Filter Mask MASK23

To prevent inhalation of Dust and non-toxic airborne powders, and aqueous mists.



Tallow Candle TALLOW38

Flux for lead came.

Tiffany Technique

Copper Foil and Foiling Tools.

5.5mm (7/32") Edco Copper Foil

The top quality brand.
0.03mm thick.
32.9 metres per roll.



Standard Copper Foil

Widths Available:

FOIL23 - 4mm (3/16")

FOIL42 - 5.5mm (7/32")

FOIL28 - 6mm (1/4")

FOIL29 - 10mm (3/8")



Foil Dispenser FOIL24

Stop your copper foil from rolling away and keep your work station tidy. This handy dispensing unit holds up to seven different widths of copper foil.

Discounts available on full boxes of foil.
4mm, 5.5mm & 6mm - 144 rolls per box.
10mm - 72 rolls per box.

Black Backed Foil

For use with Black Patina and clear glass.

One Width Available:

FOIL34 - 5.5mm (7/32")



Foil Pattern Shears FOIL26

The special blades remove enough from the edge of each piece of your pattern to allow for copper foil between glass pieces.

Silver Backed Foil

For use with clear glass and mirrors when a polished silver finished is required.

Widths Available:

FOIL63 - 5.5mm (7/32")

FOIL38 - 6mm (1/4")

FOIL93 - 10mm (3/8")



Copper Foil Sheet

Adhesive backed.
Can be cut into filigrees or shapes and soldered.

FOIL33 - 300 x 300mm square.



Dynasty Copper Foil

A cheaper alternative.
0.03mm thick.
32.9 metres per roll.

Standard Copper Foil

One Width Available:

FOIL44 - 4mm (3/16")

FOIL37 - 5.5mm (7/32")

FOIL22 - 6mm (1/4")

FOIL35 - 10mm (3/8")

Black Backed Foil

One Width Available:

FOIL43 - 5.5mm (7/32")

Silver Backed Foil

One Width Available:

FOIL39 - 5.5mm (7/32")

FOIL47 - 6mm (1/4")

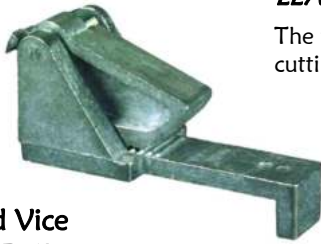


All Nova Tool NOVA

A useful studio tool. Can be used to crimp foil.

Leaded Work

Tools and Materials.



Lead Vice
LEAD73

For stretching lead came.

Lead Knife
LEAD74

The traditional way of cutting lead came.



All Nova Tool
NOVA

A useful studio tool. Can be used to open and close lead came.



Brass Brush
BRUSH22

For cleaning lead came.

Lead / Wire Snips
LEAD76

Gives a clean straight cut when cutting lead or brass came and wire. Can be used to mitre.



Glass Hammer
HAM23

With 2 different heads for glass and lead work.

Leaded Light Cement
Available in 2kg CEM22 & 5kg CEM23

Both sizes are Phoenix brand. Contains White Spirit.



Horseshoe Nails
Available in 250g NAIL62
or Each NAIL38

Approximately 86 nails per 250g.



Nylon Brush
BRUSH32

For working leaded light cement into finished panels.

Black for Lead & Solder Patina
Available in: 50ml PAT97 & 500ml PAT96

Apply to clean lead & solder. Allow to dry, then polish.



Other Patinas

Copper for Solder - Especially Tiffany Style
Available in: 50ml PAT26 & 200g Crystals PAT24

Apply to clean solder. 200g crystals to dilute with approximately 1 pint of water.

Black Lead Polish
75ml LEAD79

For blackening lead came. Contains White Spirit.

Black for Brass
Available in: 50ml PAT99 & 500ml PAT98

Apply to clean de-greased brass. Allow to dry, then polish. A second application may be necessary.

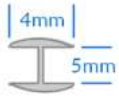
All patinas contain inorganic acids and so are all hazardous to some extent. Please read the instructions carefully and use with care.

Leaded Work

Mommer Lead Came

A high quality milled lead came. Mommer are a German company experienced in lead work that have taken over Jansen & Buscher's came production. Available in 25kg box or single 2 metre lengths.

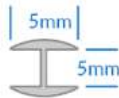
H Section Round Lead



4 x 5mm (7/32")

Available in:
2 Metres – LEAD443
25kg Box – LEAD229

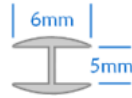
Approx. 112 lengths per box.



5 x 5mm (3/16")

Available in:
2 Metres – LEAD23
25kg Box – LEAD22

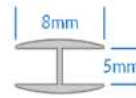
Approx. 99 lengths per box.



6 x 5mm (1/4")

Available in:
2 Metres – LEAD26
25kg Box – LEAD24

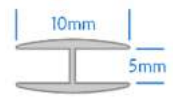
Approx. 81 lengths per box.



8 x 5mm (5/16")

Available in:
2 Metres – LEAD28
25kg Box – LEAD27

Approx. 64 lengths per box.

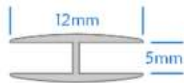


10 x 5mm (3/8")

Available in:
2 Metres – LEAD32
25kg Box – LEAD29

Approx. 52 lengths per box.

H Section Round Lead



12 x 5mm (1/2")

Available in:
2 Metres – LEAD442
25kg Box – LEAD333

Approx. 44 lengths per box.

H Section Flat Lead



10 x 5mm (3/8")

Available in:
2 Metres – LEAD67
25kg Box – LEAD64

Approx. 52 lengths per box.



12 x 5mm (1/2")

Available in:
2 Metres – LEAD34
25kg Box – LEAD33

Approx. 50 lengths per box.

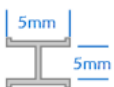


16 x 5mm (5/8")

Available in:
2 Metres – LEAD37
25kg Box – LEAD36

Approx. 42 lengths per box.

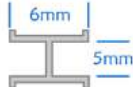
H Section Flat Lead with Bead



5 x 5mm (3/16")

Available in:
2 Metres – LEAD96
25kg Box – LEAD39

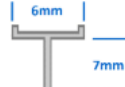
Approx. 99 lengths per box.



6 x 5mm (1/4")

Available in:
2 Metres – LEAD97
25kg Box – LEAD49

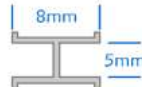
Approx. 81 lengths per box.



6 x 7mm (1/4")

Available in:
2 Metres – LEAD447
25kg Box – LEAD334

Approx. 66 lengths per box.



8 x 5mm (5/16")

Available in:
2 Metres – LEAD99
25kg Box – LEAD77

Approx. 64 lengths per box.



10 x 5mm (3/8")

Available in:
2 Metres – LEAD222
25kg Box – LEAD92

Approx. 52 lengths per box.

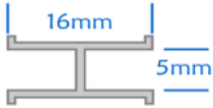


12 x 5mm (1/2")

Available in:
2 Metres – LEAD223
25kg Box – LEAD93

Approx. 50 lengths per box.

H Section Flat Lead with Bead

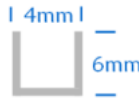


16 x 5mm (5/8")

Available in:
2 Metres – LEAD224
25kg Box – LEAD94

Approx. 42 lengths per box.

U Section Lead



6 x 4mm (1/4")

Available in:
2 Metres – LEAD444
25kg Box – LEAD337

Approx. 89 lengths per box.

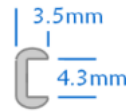


8 x 4mm (5/16")

Available in:
2 Metres – LEAD446
25kg Box – LEAD339

Approx. 81 lengths per box.

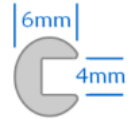
C Section Round Lead



3.5 x 4.3mm (1/8")

Available in:
2 Metres – LEAD43
25kg Box – LEAD42

Approx. 119 lengths per box.



6 x 4mm (1/4")

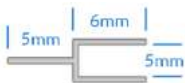
Available in:
2 Metres – LEAD46
25kg Box – LEAD44

Approx. 37 lengths per box.

Y Section Lead, Zinc & Brass Came

Used when a leaded panel is to be encapsulated into a double glazed unit.

Y Section Lead



6 x 5mm

Available in:
2 Metres – LEAD48
25kg Box – LEAD47

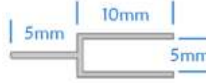
Approx. 53 lengths per box.



8 x 5mm

Available in:
2 Metres – LEAD83
25kg Box – LEAD226

Approx. 46 lengths per box.



10 x 5mm

Available in:
2 Metres – LEAD84
25kg Box – LEAD227

Approx. 42 lengths per box.

Y Section Zinc



4 x 4 x 10mm

Available in:
1.8 Metres – ZINC26

Y Section Brass

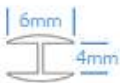


4 x 4 x 10mm

Available in:
1.8 Metres – BRASS22

Zinc Came & Rebar

Essential where strength is most important, prevents panels bending and breaking. Zinc is strong and rigid, lightweight, easy to solder and does not rust.



6 x 4mm H Section Round

Available in:
1.8 Metres – ZINC22



7 x 4mm H Section Flat

Available in:
1.8 Metres – ZINC23



12 x 4mm U Section

Available in:
1.8 Metres – ZINC38



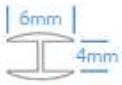
10 x 3mm Rebar

Available in:
1.8 Metres – BAR23

For reinforcing, does not rust like steel rebar.

Brass Came

Where a brass finish is chosen or is required to match existing brass work.



**6 x 4mm H Section
Round**

Available in:
1.8 Metres – CAME36



**12 x 4mm H Section
Flat**

Available in:
1.8 Metres – CAME37

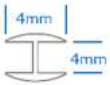


12 x 4mm U Section

Available in:
1.8 Metres – CAME38

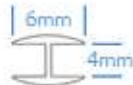
Copper Came

Where a copper finish is chosen or when matching period copper windows.



**4 x 4mm H Section
Round**

Available in:
1.8 Metres – CAME29



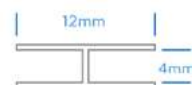
**6 x 4mm H Section
Round**

Available in:
1.8 Metres – CAME32



**8 x 4mm H Section
Flat**

Available in:
1.8 Metres – CAME33



**12 x 4mm H Section
Flat**

Available in:
1.8 Metres – CAME34

Strengthening Wire

Brass Wire
20 Gauge – WIRE44

Sold per metre
For edging lamps and
giving extra strength
to soldered seams.

Copper Wire
16 Gauge – WIRE63

Sold per metre
For wire ties, steel
bar to strengthen
leaded windows, and
hanging loops.

Grinding

Grinder, Heads and Accessories.

Imperial Mini Star Grinder **GRIND22**

An inexpensive, compact and powerful grinder with 4200 RPM motor. 16mm fast grinding head included as standard. No sponge is necessary to keep the grinding head wet, an innovative collar design directs water straight to the head.



Imperial Eyeshield **GRIND63**

Protects face and eyes from flying debris. Fits the Imperial Mini Star Grinder. Includes steel rod mounts that fit into slots at the back of the Imperial Mini Star Grinder and a 160mm x 175mm acrylic eye shield.



Imperial Grinding Heads

Imperial heads are a fast grit for quick and easy removal of material at a fraction of the cost of bigger brands.

Imperial 25mm Head Fast Grit

GRIND47

For Imperial Mini Star Grinder.



Imperial 19mm Head Fast Grit

GRIND48

For Imperial Mini Star Grinder.



Imperial 16mm Head Standard Grit

GRIND64

For Imperial Mini Star Grinder.



6mm Drilling & Grinding Head

GRIND49

Fast grit for quick removal of material and drilling holes (not water cooled). Will also fit Glastar grinders G141 & G121



Safety Glasses

GLASS23

For general purpose use.



Carbide Grinding Stone

GRIND46

A useful hand tool for grinding rough edges on glass.



Imperial Diamond Hand File

GRIND62

Hand file for removing burrs and smoothing edges. 200 & 300 grit file.



Abrasive Diamond Hand Pad

GRIND37

60 grit 9x6cm diamond area. For smoothing any rough edges on your glasswork.

Decorative Items

Glass Rondels - These are the last of our remaining stock of TATRA rondels.

Hand spun Antique Rondels in 60mm & 80mm.

Available in;



Clear

80mm *RON100L*



Light Amber

80mm *RON110L*



Clear Swirled Rondel

50mm *RON100S*



Light Green

60mm *RON120*
80mm *RON120L*



Mid Blue

80mm *RON132L*

Glass Jewels

Pressed and polished glass jewels for Tiffany lamps and windows.

Faceted 50mm Round



Available in;
Amber *J111R50*

Lens 33mm Round

Designed so the lip around the edge fits into lead came.



Available in;
Clear *J100L33*
Amber *J111L33*
Cobalt Blue *J132L33*
Red *J152L33*



Turquoise

80mm *RON523L*



Violet

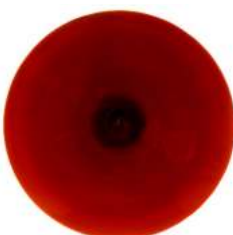
80mm *RON534L*

Lens 25mm Round

Designed so the lip around the edge fits into lead came.



Available in;
Clear *J100L25*
Amber *J111L25*
Cobalt Blue *J132L25*



Red

60mm *RON152*
80mm *RON152L*



Orange

60mm *RON171*
80mm *RON171L*

Decorative Items

Aztec Jewels

Hand cast with a natural raw gem appearance.

40mm Square, 16mm High.

Available in::

Glass Nuggets

Irregular shaped nuggets or globs of glass - for jewellery, light catchers, windows or lamps.

Useful for grapes and flower centres or to add texture.

Cathedral 15mm Nuggets

Sold as;

Individual Standard Colours NGS15

250g Standard Colours NGS15K

Available in;

Clear, Amber, Light Green, Dark Green, Light Blue, Dark Blue, Pale Rose, Lilac, Dark Purple, Red & Teal.

250g Mixed Colours NGSMIX15K

Selection of colours as above.

Approximately 55 nuggets per 250g bag.

Individual Hot Colours NGH15

250g Hot Colours NGH15K

Available in;

Red cathedral.

Approximately 55 nuggets per 250g bag.

Individual Iridised Colours NGI15

250g Iridised Colours NGI15K

Available in;

Red cathedral, Blue cathedral & Peach Opal.

Approximately 55 nuggets per 250g bag.

Cathedral 25mm Nuggets

Sold as;

Individual Standard Colours NGS25

Available in; Clear, Amber, Light Green, Dark Green, Blue, Teal & Yellow.

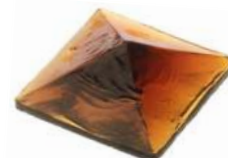
250g Standard Colours NGS25K

Selection of colours as above.

Approximately 26 nuggets per 250g bag.



Clear J100A40



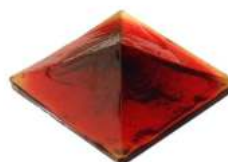
Amber J111A40



Green J125A40



Blue J132A40



Red J152A40



JSQR
Red



JSQB
Blue

Brilliant Cut Squares

Flashed antique glass with a brilliant cut star pattern for Victorian style doors and traditional panels.

Available in; 127mm (can be cut down to 102mm).

Glass Crystals

For decorating chandeliers, lamps or Christmas trees.

Fitted with antique wire hook.

Droplet SHC7

Clear

70mm long,
110mm long
with wire.
15mm wide.



Spear SHC4

Clear

105mm long,
135mm long
with wire.
30mm wide.



Almond SHC3

Clear

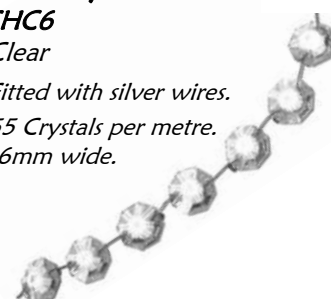
45mm long,
65mm long
with wire.
28mm wide.



Lead Crystal Chain SHC6

Clear

Fitted with silver wires.
55 Crystals per metre.
16mm wide.



Bevels

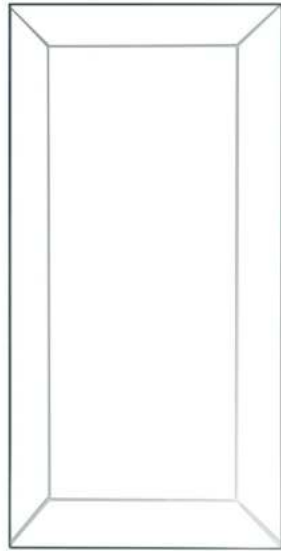
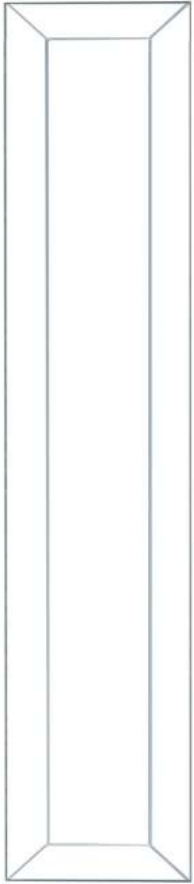
Standard Shapes and Pencil Bevels.

Standard shaped high quality single bevels for traditional leaded windows and doors.
Glass thickness 5mm, bevel width 12mm, outer edge thickness 2.5mm.

Drawings not to scale.

BEV49

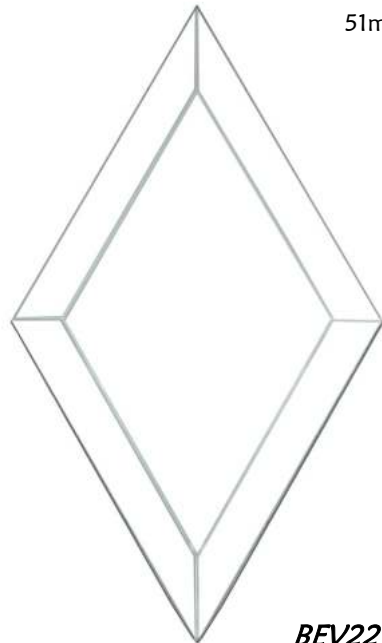
Pencil Bevel.
51mm x 254mm.



BEV43
Rectangular Bevel.
76mm x 153mm.



BEV63
Pencil Bevel.
51mm x 127mm.

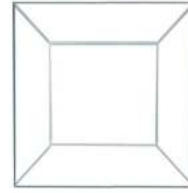


BEV22
Diamond Bevel.
177mm x 104mm.

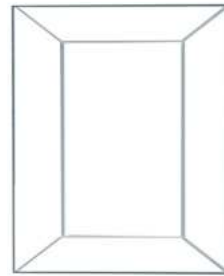


BEV88
Pencil Bevel.
25mm x 77mm.

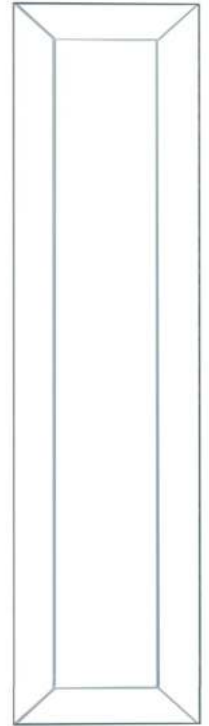
BEV29
Pencil Bevel.
25mm x 229mm.



BEV44
Pencil Bevel.
51mm x 51mm.



BEV47
Pencil Bevel.
51mm x 76mm.



BEV42
Pencil Bevel.
51mm x 203mm.



BEV62
Pencil Bevel.
51mm x 102mm.



BEV96
Pencil Bevel.
25mm x 152mm.

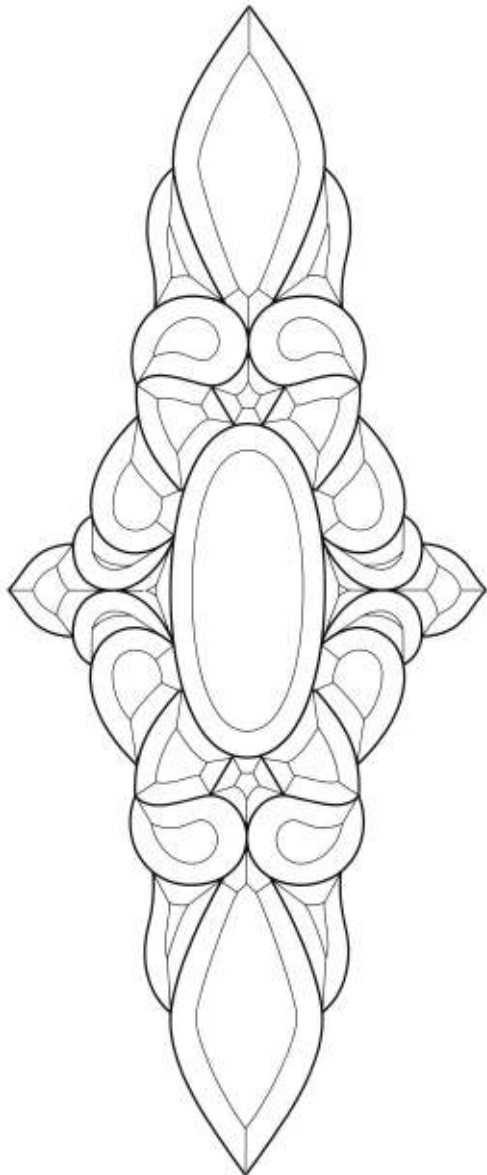
Bevels

Bevel Clusters.

Ideal as centre pieces for doors, windows or transoms.

Glass thickness 5mm, bevel width 12mm, outer edge thickness 2.5mm.

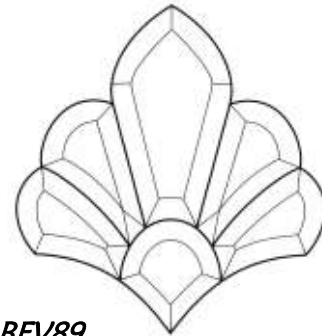
Drawings not to scale.



BEV73

318mm Wide x 775mm High.

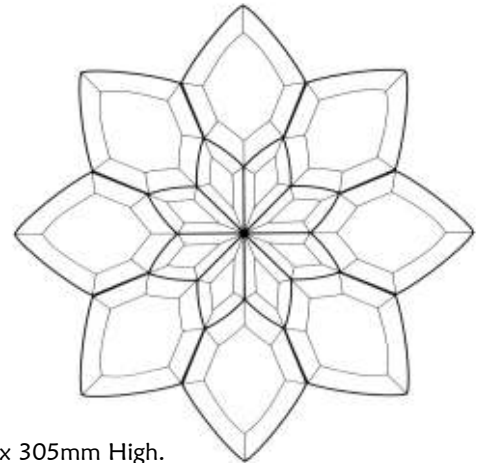
29 Pieces.



BEV89

203mm Wide x 203mm High.

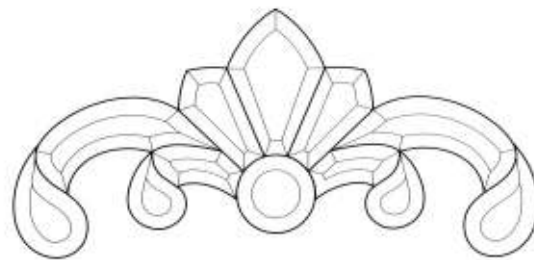
6 Pieces.



BEV46

305mm Wide x 305mm High.

16 Pieces.



BEV24

343mm Wide x 178mm High.

12 Pieces.

Miscellaneous Items



Mirror Back Protector

A self adhesive silver foil which prevents damage to silvering when stuck to the back of mirror glass.

600mm Wide.

Sold Per Metre - MIR26



Mirror Hook

HOOK46

These self-adhesive, hard wearing metal plates are backed with Xtramount® mirror adhesive tape.

Simply stick to the back of your mirror.

The perfect way to hang a mirror without any visible signs.

100mm x 100mm.

Self Adhesive Felt

A black felt that can be used to cover the bottom of lamp bases, boxes and terrariums to avoid any surface scratches.

700mm Wide.

Sold Per Metre - FELT24



Glass Cleaner ***CLEAN23***

An excellent quality aerosol product which leaves a clean, dust free glass surface.

660ml.



Glass Painting

The Rockingham Range of Glass Paints and Brushes.

A comprehensive range of paints and brushes to fulfil all the requirements of today's painter.

This range of traditional stained glass paints is sourced from well established companies in Staffordshire, central England. Staffordshire is the centre of the ceramics industry and is commonly known as the 'Potteries'. It is the home of well known factories such as Royal Doulton, Wedgwood, Minton and Spode, which have helped to develop local companies specializing in the manufacture of paints and enamel for use on china and glass.

The range offers a variety of colours, ranging from the more traditional shades to contemporary colours such as teal and purple. They are available in tracing and shading colours, silver stains, transparent and opaque enamels. The paints are finely ground to produce smoother lines and more delicate shading and are packaged in 60cc containers each holding 50g of powdered paint. They should be mixed with water and gum Arabic or other mixing agents before application to glass and subsequent firing.

The range of brushes has been compiled to offer the painter a brush for all painting requirements.

1) Tracing Brushes

Used for drawing lines. To be able to cater for all tracing requirements it is useful to have a range of sizes.

Available in:

- Size 1 - **BRUSH38**
- Size 3 - **BRUSH93**
- Size 5 - **BRUSH46**

2) Badger Blenders

Primarily used for blending paint into an even, smooth coating. They can also be used to create striations, stipples & textures.

Available in:

- Round - **BRUSH62**
- 32mm - **BRUSH42**
- 76mm - **BRUSH23**

Gum Arabic

25g - GUM82

A mixing agent to be mixed with the powdered paint and water to your own preferred consistency before application to glass and any subsequent firing takes place.

Makes up to 200ml.

These brushes are made entirely by craftsmen using the highest quality materials, which include badger hair blenders and ox hair tracers.



3) Scrub Brushes

Used for removing glass paint from the glass surface.

Available in:

- Size 2 - **BRUSH29**
- Size 6 - **BRUSH34**
- Size 8 - **BRUSH63**

4) English Stippler

BRUSH72

Used for producing textural effects and intensifying shadows.

More commonly used for stippling on the paint to create a multitude of small dots.

5) Silver Stain Brush

13mm

BRUSH84

Use solely for silver tracing.

6) Matting Brush

38mm

BRUSH28

Use to apply colour to glass.

Glass Painting

The Rockingham Range of Glass Paints.

Tracing Colours

Used for outlining drawings.

Fire at 650°C.

Available in 50g.



PT211
Tracing
Brown



PT288
Tracing Black



PT999
Patina Enamel
Softens the trace line.
Fire at 650°C.
Available in 50g.

Transparent Enamels

To be used when a transparent effect is required. Fire at 550°C.

Available in 50g.



PT123
Moss Green



PT494
Rose Purple



PT136
Delft Blue



PT433
Cornflower
Blue



PT143
Parma Violet



PT426
Lime Green



PT152
Ruby



PT516
Gold Yellow



PT423
Blue / Green

Silver Stain

Amber.

Fire at 550°C.

Available in 25g.



PT111
Amber



PT417
Umber Brown



PT413
Terracotta

Shading Colours

Used for shading.

Fire at 650°C.

Available in 50g.



PT488
Charcoal



PT482
Grey / Green



PT100
Arctic White



PT114
Ancient Brown

Opaque Enamels

To be used when an opaque effect is required. Fire at 600°C.

Available in 50g.



PT355
Blood Red



PT365
Canary
Yellow



PT367
Primrose
Yellow



PT623
Teal Green



PT335
Medium Blue



PT188
Ebony Black



PT200
Porcelain
White



PT622
Apple Green



PT345
Emperor
Purple

Kilns

A great all-round kiln for fusing and also deep enough for slumping projects. Fitted with Quartz Tubes, which cover the elements in the kiln and thus protect your work from any loose residue.

The Quartzfire 13 is an inexpensive, reliable and long lasting kiln which is economical and efficient. Full kiln service is available at Kansa to keep the hardware in tip-top condition.

Paragon 13Amp Quartzfire - KILN33

Suitable for both paint firing and fusing.

Elements / Power

- Quartz tube covered heating elements prevent any residue from spoiling work.
- Normal 13 Amp plug - 240V

Construction

- Steel case.
- Temperature sensor sheathed with high nickel steel to ensure long life.
- Heavy steel base (with rubber feet) supports the brick bottom, no extra stand is needed.
- Top lifting - supported by hydraulic arms.

Controller

- Sentry Xpress, 3 Key Digital Programmer includes two modes; single speed & eight segment ramp hold.
- Stores up to 4 program settings in ramp hold.
- Can skip any segment without reprogramming.

Size

- Weight - 84kg
- Exterior Size: Depth - 740mm
 Width - 610mm
 Height - 585mm (with lid closed)
- Interior Size: Depth - 445mm
 Width - 445mm
 Height - 406mm

Advantages

- Easy to load as the top lifts out of the way and glass work can be assembled inside the kiln without any difficulty.
- Heats from the top for even heat distribution throughout the kiln.
- Maximum Temperature - 926°C / 1700°F
- Two Year Warranty

Comes complete with Furniture Kit

- 430mm Square Shelf
- 4 x 25mm square shelf supports included
- 1lb of shelf primer also provided



KILN33

KILN34

13Amp Quartzfire Furniture Kit
Available separately

Lamp Bases

Our lamp bases are made from cast zinc (white metal) or brass.

All bases are supplied wired and CE tested with a lampholder, harp, finial, and approximately 2 metres of cable fitted with an inline switch and 3 pin fused plug. Heights shown are measured to the bottom of the harp.

Round Wooden Fan Bases

Simple yet attractive. Available in a Mahogany finish.

A flat fan shaped piece of glass fits into the slot in front of the bulb holder. We can supply the base as shown or drill an extra hole in the top for you to incorporate one of our cast brass fan figures.

(Please specify when ordering).

Black Fan Base **BASE44**

130mm Diameter
33mm High

*Slot length 80mm
Slot width 6mm*



Mahogany Fan Base **BASE72**

130mm Diameter
33mm High

*Slot length 80mm
Slot width 6mm*



Example Only.
BASE72 with FIG78

Cast Brass Fan Base Figures

Two designs, available in a variety of metalwork finishes.

These figures can be used on either of the round wooden fan bases.

Two Dancer Figures

Available in:

FIG83 - Brass

FIG62 - Antique

FIG66 - Chrome

155mm High
185mm Wide



Flapper Figures

Available in:

FIG78 - Brass

FIG46 - Antique

FIG93 - Chrome

175mm High
160mm Wide



Large Deco Figure

Solid Cast Brass

Available in:

BASE56 - Antique

BASE59 - Chrome

BASE57 - Polished Brass

BASE53 - Verdigris

685mm High
178mm Harp
(Total Height 863mm)
190mm Wide

*Suitable for shade
diameter above
400mm.*



Lamp Bases

Our lamp bases are made from cast zinc (white metal) or brass.

All bases are supplied wired and CE tested with a lamp holder, harp, finial, and approximately 2 metres of cable fitted with an inline switch and 3 pin fused plug.

Heights shown are measured to the bottom of the harp.

Small Bases *(Total height is base height plus harp).*

Small Tiered **BASE97**

Chrome Finish
200mm High
140mm Harp
(Total Height 340mm)
140mm Wide

*Suitable for
shade diameter of
210 - 340mm.*



Small Tiered **BASE96**

Antique Finish
200mm High
140mm Harp
(Total Height 340mm)
140mm Wide

*Suitable for
shade diameter of
210 - 340mm.*



Canterbury **BASE238**

Antique Finish
200mm High
195mm Harp
(Total Height 395mm)
123mm Wide

*Suitable for
shade diameter of
200 - 300mm.*



Winchester **BASE237**

Antique Finish
170mm High
155mm Harp
(Total Height 325mm)
110mm Wide

*Suitable for
shade diameter of
160 - 220mm.*



Square Deco **BASE234**

Antique Finish
180mm High
155mm Harp
(Total Height 335mm)
96mm Wide

*Suitable for
shade diameter of
170 - 220mm.*



Antique Square **BASE93**

Antique Finish
250mm High
140mm Harp
(Total Height 390mm)
90mm Wide

*Suitable for
shade diameter of
160 - 220mm.*



Lamp Bases

Our lamp bases are made from cast zinc (white metal) or brass.

All bases are supplied wired and CE tested with a lamp holder, harp, finial, and approximately 2 metres of cable fitted with an inline switch and 3 pin fused plug.

Heights shown are measured to the bottom of the harp.

Medium Bases *(Total height is base height plus harp).*

Palmyra BASE38

Antique Finish
320mm High
178mm Harp
(Total Height 498mm)
180mm Wide

*Suitable for shade
diameter of
240 - 460mm.*



Hexagonal BASE236

Antique Finish
290mm High
195mm Harp
(Total Height 485mm)
150mm Wide

*Suitable for shade
diameter of
220 - 400mm.*



Sailsbury BASE239

Brass Finish
275mm High
140mm Harp
(Total Height 415mm)
160mm Wide

*Suitable for shade
diameter of
210 - 340mm.*



Fleur De Lys BASE28

Antique Finish
280mm High
178mm Harp
(Total Height 458mm)
150mm Wide

*Suitable for shade
diameter of
240 - 460mm.*



Lamp Fittings

For a more extensive selection of parts & fittings please request our Component Parts Catalogue.

Brass Vase Caps

For soldering or bolting onto the top of lamps.
Can be left polished brass or antique finished with Black for Brass Patina.

Plain Vase Caps

Available in various sizes and metalwork finishes.
All with 10mm centre hole.



60mm Diameter

Available in:

Antique Paint - **VASE60A**
Polished Brass - **VASE60B**
Chrome - **VASE60C**
Matt Nickel - **VASE60M**



Cone Vase Cap 50mm Diameter

Available in:

Polished Brass - **VASEVB**
Chrome - **VASEVC**



88mm Diameter

Available in:

Antique Paint - **VASE88A**
Polished Brass - **VASE88B**
Chrome - **VASE88C**
Matt Nickel - **VASE88M**



Lampholder Cover 50mm Diameter

Available in:

Polished Brass - **VASEVSB**
Chrome - **VASEVSC**



113mm Diameter

Polished Brass - **VASE113**

137mm Diameter

Polished Brass - **VASE137**



Dome Vase Cap 140mm Diameter

Available in:

Polished Brass - **VASE140**

Harps



To hold a shade on a lamp base.

The harp fits onto the threaded tube under the bulb holder, the shade sits on top of the harp and is secured by a finial.

Height is to bottom of finial.

Antique Finish.
Available in two sizes:

140mm - **HARP23**
178mm - **HARP24**

Pendant Fittings



3 Bulb Fitting

CE Tested & wired with 1 Metre of Black Cable.

Available in:

Antique Paint - **BULB28**
Polished Brass - **BULB29**
Chrome - **BULB32**

Also Available with E27 Lampholders



2 Bulb Fitting

CE Tested & wired with 1 Metre of Black Cable.

Available in:

Antique Paint - **BULB43**
Polished Brass - **BULB44**
Chrome - **BULB46**

Also Available with E27 Lampholders

Acorn Finials



Available in Brass or Antique with a 6mm or 10mm threaded hole.

Brass / 6mm - **NS273**
Brass / 10mm - **NS263**
Antique / 6mm - **FIN39**
Antique / 10mm - **FIN23**

Lamp Fittings

For a more extensive selection of parts & fittings please request our Component Parts Catalogue.

Pendant Suspension

For hanging Tiffany shades.

The pendant suspension below can be bought as a complete product. Wired & CE Tested with 500mm of chain.



Available in the following metalwork finishes:

Antique Paint - **SUSP36**
Chrome - **SUSP37**
Polished Brass - **SUSP42**

The items that make up these Suspensions can also be bought as separate items;

Ceiling Plate with Hook

Complete with crossbar for fitting.

Available in:

Antique Paint - **PIA**
Polished Brass - **PIB**
Chrome - **PIC**
Matt Nickel - **PIM**

Oval Link Chain

22mm Links. Sold Per Metre.

Available in:

Antique - **CH22**
Plated Brass - **CH23**
Chrome - **CH33**

Cable

3 Core 0.75 Cable. Per Metre.

Available in:

Black - **CAB33**
Gold - **CAB34**

Hoop Rings

35mm High with a 10mm Threaded Hole.

Available in:

Antique Paint - **HOOP23**
Raw Brass - **HOOP22**

10mm Threaded Tube

Available in:

75mm Length - **NS342**
1 Metre Length - **NS346**

Bulb Holders

BC without switch, 10mm entry.

Available in:

Antique - **BULB24**
Brass - **BULB23**
Chrome - **BULB26**

E27 Edison Screw.

Available in:

Black - **BULB64**

Nuts - NUT226

10mm. Steel. Hexagonal.

Washers - WASH42

20mm diameter with 10mm hole. Steel.

Lamp Fittings

For a more extensive selection of parts & fittings please request our Component Parts Catalogue.

Brass Pressings

Ideal for soldering onto bent panel shades, plain shades or mirrors to add decoration or cover any untidy joints. They can be given an antique finish with Black for Brass patina, but must be thoroughly cleaned and de-greased before to achieve a good finish.



Filler
PRESS23

203mm Long.



Lions Head
PRESS33

55mm High.
48mm Wide.
18mm Projection.



Rosette
PRESS26

39mm Diameter.



Fleur De Lys
PRESS32

43mm High.
28mm Wide.



Dragonfly
PRESS44

110mm High.
149mm Wide.



Palmette
PRESS22

85mm High.
70mm Wide.



Long Leaf
PRESS29

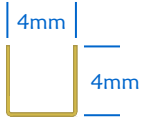
175mm Long.
20mm Wide.

Lamp Fittings

For a more extensive selection of parts & fittings please request our Component Parts Catalogue.

Brass Channel

Provides a strong alternative to Copper Foil & enables fast production.



U Section - 4mm

Suitable for 3mm & 4mm thick glass.

Sold as 2 Metres - CHAN23



Perforated - 3mm

Similar to the above channels but bends easier around bent glass panels.

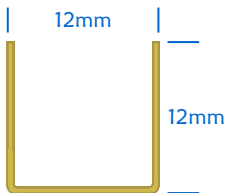
Sold as 915mm - CHAN38



C Section - 3mm

Excellent for bent panel lamps using opal glass.

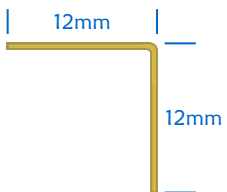
Sold as 795mm - CHAN42



Brass U Section - 12mm

20 Gauge Polished Brass.

Sold as 1.2 Metres - CHAN36



Brass Angle - 12mm

20 Gauge Polished Brass.

Sold as 1.2 Metres - ANG23

Brass Banding



Solid Brass Band

38mm wide.

Can be used as a collar on larger bent panel lamps or as a decorative border.

Sold Per Metre - BAND36



Perle Band

11mm diameter decorative ball strip, used to cover joints between panels.

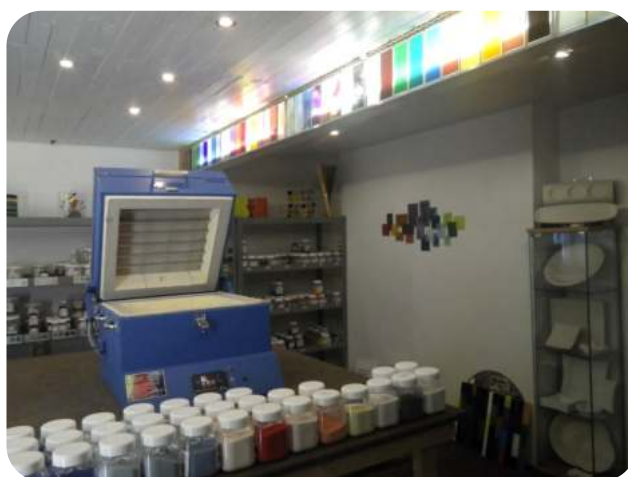
Sold Per Metre - BAND22

Established for Over 40 Years

Why not visit our large showrooms displaying our extensive range of glass colours, fusing & stained glass materials and lighting products.



Lighting Showroom



Fusing Showroom

*We are based in a historic former Flour Mill built in 1842, situated in a rural setting by the side of a canal.
Throughout the building there is an excellent selection of finished glass pieces to view and also
the opportunity to see working kilns, a sandblast system and other glass work tools.*



Elsecar Heritage Centre



You can find us on Wath Road, directly opposite Elsecar church, or just down the road from the Elsecar Heritage Centre and Elsecar Park.

Just put S74 8HW in your sat nav.

The Heritage Centre also has a selection of craft and antique shops, a café and other small local businesses.

Wentworth Woodhouse is just 2 miles away and a lovely place to visit when making a trip to Elsecar



KANSA

Established for 43 Years



The Flour Mill, Wath Road, Elsecar, Barnsley, South Yorkshire, S74 8HW

Open 9am to 5pm, Monday to Friday (except Bank Holidays) and 10am to 2pm the first Saturday of every month. Please note we are closed ALL Saturdays throughout August.

Telephone: 01226 747424 / Fax: 01226 743712

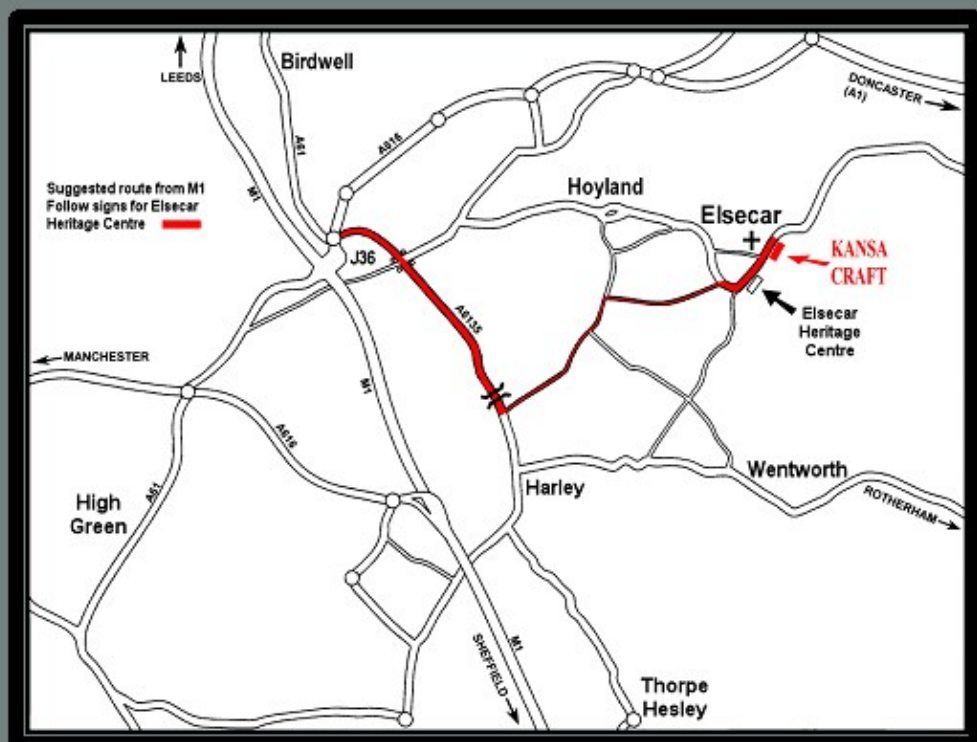
Email: stainedglass@kansacraft.co.uk / Website: www.kansacraft.co.uk



Like us on



Find us on



FROM JUNCTION 36 ON THE M1 FOLLOW THE BROWN SIGNS TO ELSECAR HERITAGE CENTRE.

DRIVE PAST THE CENTRE AND ELSECAR CHURCH WILL BE ON YOUR LEFT HAND SIDE.

WE ARE ON THE RIGHT HAND SIDE DIRECTLY OPPOSITE THE CHURCH.