

FLORAL WREATH STITCH GUIDE

by Fire and Iris Designs



All designs and content are the property of Fire and Iris Designs, LLC.
You may not distribute this content or sell items based on this content.

Stitch Guide – Floral wreath, thread version

By: Fire and Iris Designs

About the Guide:

This is a low-stress guide. Always feel free to use whatever fibers and stitches you'd like. This is your project after all! We do recommend reading this entire guide once prior to starting your project, just so you have an idea of how this project flows. Additionally, at the end, we have some tips and suggestions for things to add to this wreath to really make it your own. If you are planning to add a monogram, or other wording or numbers to the center of the wreath, please finish reading the guide first, as you'll want to add that prior to starting to stitch this project.

In addition to this written guide, we also have a video tutorials for all of the stitches mentioned in this guide to help you with your wreath!

Thread Recommendations:

(Note: you are welcome to substitute out fibers for ones you prefer/ones that are in your stash! It is recommended for the greenery on the wreath to use 2 different shades of green)

**denotes items included in the kit*

Background:

Pepper Pot - Salt (002)* (1 skein)

Wreath:

Essentials (1 card each):

Sienna (600)*

Holly (729)*

Ivy (731)*

Flowers:

Pepper Pot:

Grape *

Nector (030)*

Mascarpone (038)*

Beaujolais (027)*

French Knots:

Essentials:

Mahogany (602)*

Pepper Pot:

Still water (167)*

Crocus (215)*

Other Fiber Suggestions:

Bow:

River Silks 4mm (#161- or any color you'd like!)

Optional Supply Suggestions/Recommendations:

Frame

Frame tacks

Beading needle

Clear beading thread

Seed beads, size 14/15 suggested



Stitch Guide – Floral wreath, thread version

By: Fire and Iris Designs

Part 1: Background

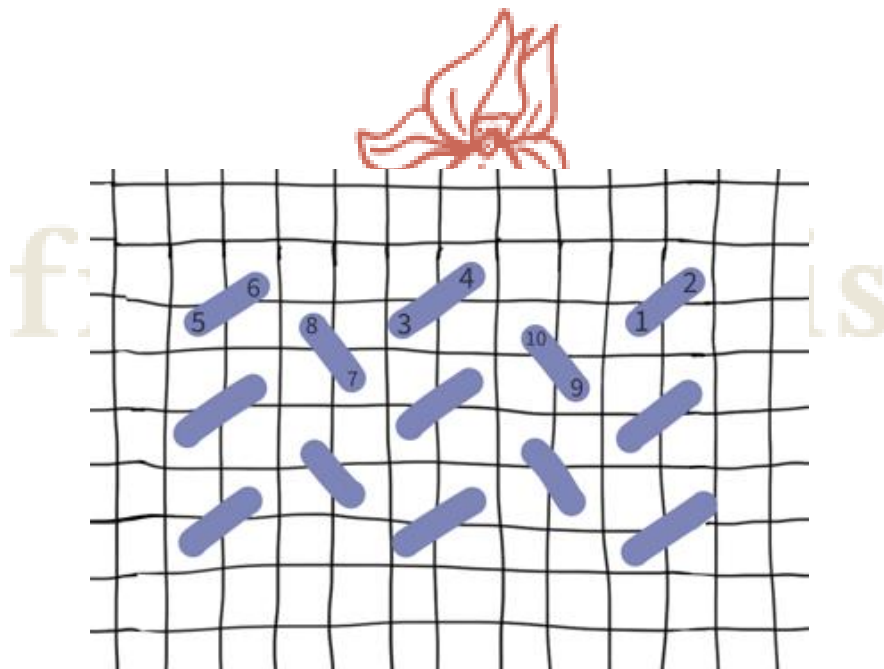
Thread: Pepper Pot – Salt (002)

Stitch: Diagram Below

Note: I recommend completing the entire background before moving on. I've found it makes it easier than trying to compensate around the stitched wreath. Because this stitch is open, you will have space to complete the wreath and add other embellishments.

Note 2: The only place I recommend skipping is inside the painted circles – these will eventually be filled with other threads, so no need to fill with the background stitch

Note 3: I've marked on the top/bottom and sides of the canvas with a suggested background size. This will create either a 4.5in round, or a 4.5in x 4.5in square (depending on how you want to finish it). Both the round and square can be used for ornaments, or the square version can be used as an insert for a small tray.



Stitch Guide – Floral wreath, thread version

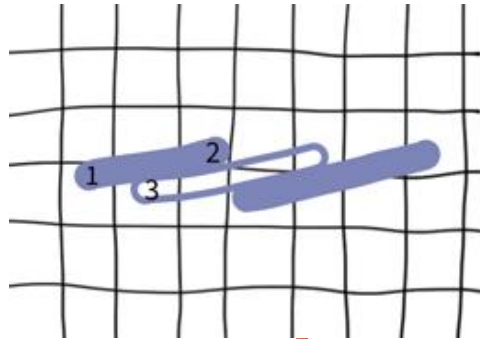
By: Fire and Iris Designs

Part 2: Wreath Stems (painted brown section)

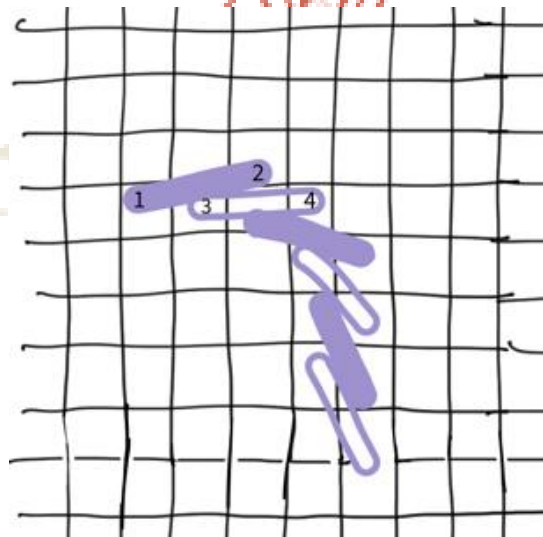
Threads: Essentials – Sienna (600)

Stitch: Stem stitch or tent stitches (both diagramed below)

Stem stitch (diagram below)



Stem stitch continued (diagram below demonstrates how to turn a rounded corner)



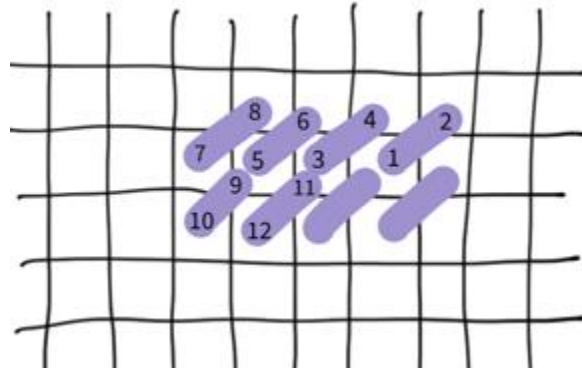
Note: If stitching this section in the stem stitch, I recommend continuing it through the painted circles. You will overlap the flower stitches on top.

Stitch Guide – Floral wreath, thread version

By: Fire and Iris Designs

Part 2: Wreath Stems (painted brown section) cont.

Continental stitch (diagram below)



Stitch Guide – Floral wreath, thread version

By: Fire and Iris Designs

Part 3: the Wreath Greens

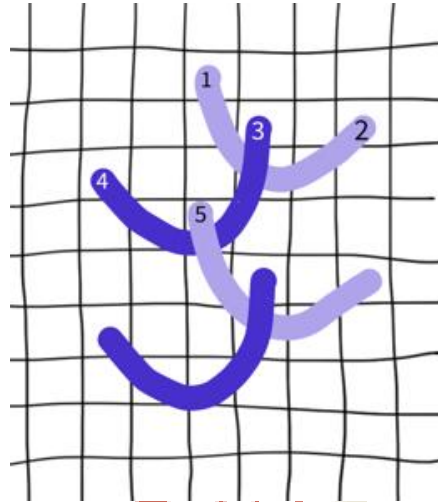
Thread:

Essentials:

Holly (729)

Ivy (731)

Stitch: Vine stitch (diagram below. Note – this stitch is stitched all in the same color, using the same needle and thread. The two colors in the diagram are just to help delineate where to carry your thread)



fire and iris

Tip: as you stitch this, I recommend rotating the canvas. This will make doing the opposite side a bit easier as you won't be trying to stitch it upside down.

Stitch Guide – Floral wreath, thread version

By: Fire and Iris Designs

This section is done in **2 rounds**.

The **first round** uses the **darkest shade of green** you have. If using our thread recommendations, you'll use **Essentials Bough (732)** for this first round.

You'll start stitching using the vine stitch by bringing your needle up as close as you can to the stitched brown stem. Following the diagram, you'll stitch this vine stitch until you've completed the entire circle.

The **second round** uses the **lightest shade of green** you have. If using our thread recommendations, you'll use **Essentials Eucalyptus (727)**.

You'll start stitching using the vine stitch the same way you started round 1. Again, following the diagram, you'll stitch this vine stitch until you've completed the entire circle. When you're done round 2, it should look something like this:

Note: you will stitch this vine stitch over the painted circles and the purple lines – that's okay!



Stitch Guide – Floral wreath, thread version

By: Fire and Iris Designs

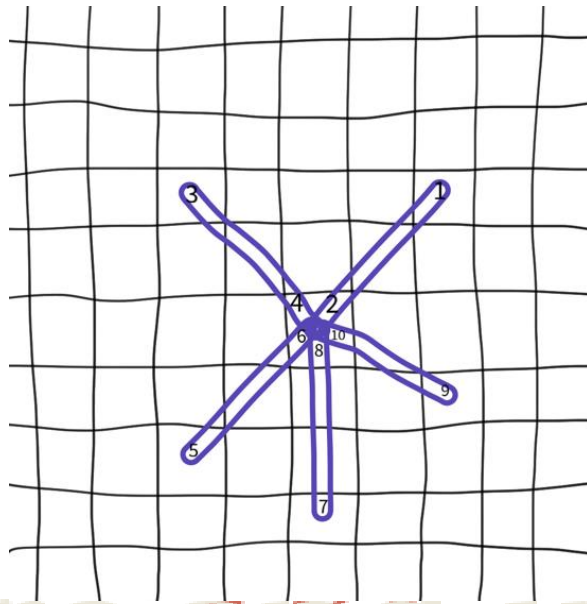
Part 4: Rose Stitch

Thread:

Pepper Pot - Beaujolais (027)

Note: you will stitch this on top of the vine stitch

*placement of these is marked by the red circles on the canvas



fire and iris

Diagram: Part 1 of the Rose Stitch

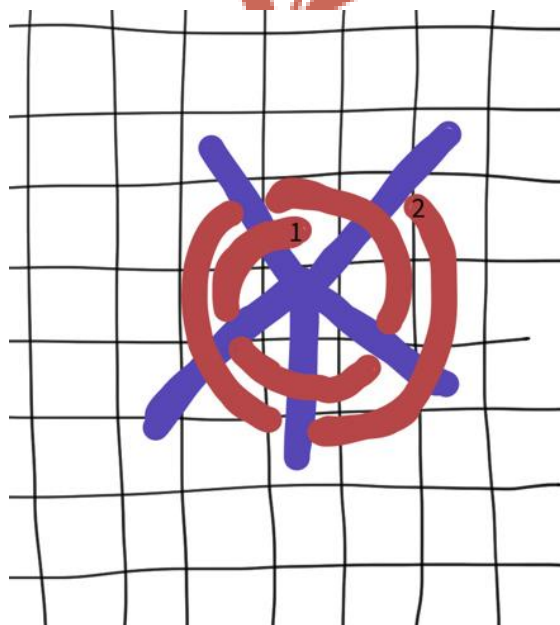


Diagram: Part 2 of the Rose Stitch

Stitch Guide – Floral wreath, thread version

By: Fire and Iris Designs

Part 5: Lazy Daisy

Threads: Pepper Pot:

Nector (030)

Mascarpone (038)

Note: you will stitch this on top of the vine stitch

*placement of these is marked by the yellow circles on the canvas

Lazy Daisy stitch diagram below. A few notes:

1. The stitches originate from the same center (or close too). If one or two originate from a place near the others, that's okay. You can always add a French knot on top to cover the center (OPTIONAL: I used Essentials Mahogany to do French knots in the center of a couple of my lazy daisies)
2. You may need more than 5 loops – that's okay too! You can make as many as you like/need to cover the area

Note: you will stitch this on top of the vine stitch

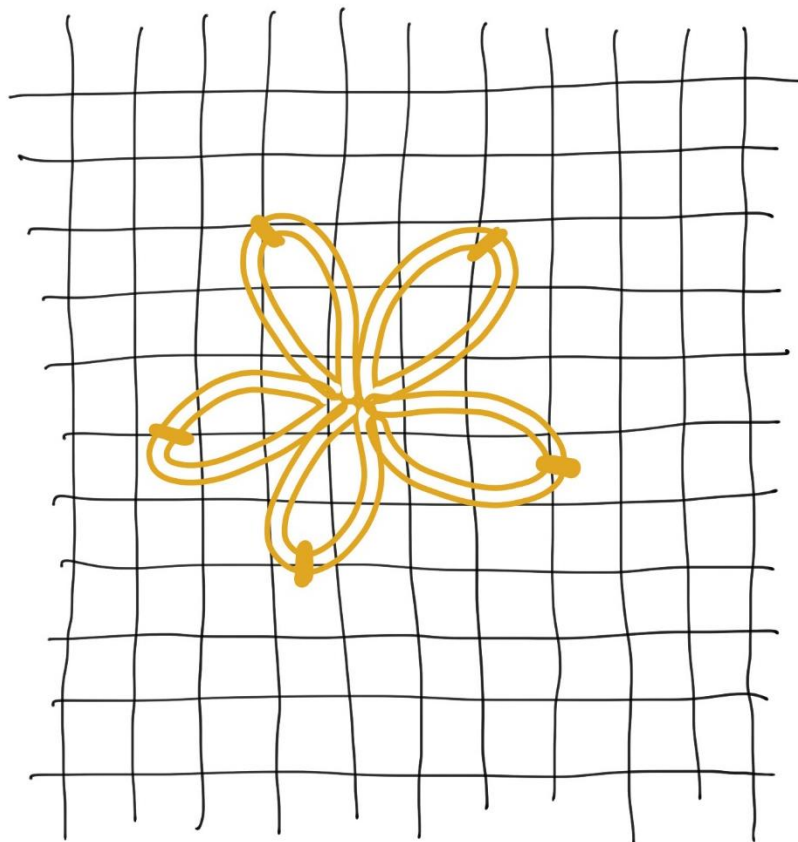
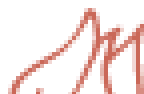


Diagram: Lazy Daisy Stitch

Stitch Guide – Floral wreath, thread version

By: Fire and Iris Designs

Part 6: Bullion Knots

Thread: Pepper Pot - Grape

Note: you will stitch this on top of the vine stitch

*placement of these is marked by the purple lines on the canvas

How to:

- a. Anchor your thread on the back of your canvas and bring your needle up from the back to the front of the canvas
- b. Make one long stitch where you'd like your bullion knot to go (it's recommended to make this no longer than 1 needle length)
- c. Bring your needle back up in the same hole you first brought it up
- d. Begin wrapping the length of thread you made the long stitch with around your needle
- e. Wrap the thread until you've covered the length of the long stitch you made
- f. Hold on to the coiled thread and pull your needle through
- g. Bring your needle back down where your long stitch was brought down and pull your thread all the way through
- h. You should now have a bullion knot laying on your canvas



fire and iris

Stitch Guide – Floral wreath, thread version

By: Fire and Iris Designs

Part 7: French Knots:

A quick stitch that can easily help elevate your wreath! The kit includes the following threads for this section, however you're welcome to use whatever thread you'd like!

For this part, you'll fill in with French knots wherever you'd like. We haven't marked any suggested areas – it's really all your preference!

Thread:

Pepper Pot:

Still water (167)

Crocus (215)

How to:

- a. Anchor your thread on the back of your canvas and bring your needle up from the back to the front of the canvas.
- b. With your non-needle hand, wrap the working end of the thread around your needle once
- c. Insert your needle into an adjacent hole on the canvas (tip: keep hold of the thread with your non-needle hand and hold some tension)
- d. Slowly pull your needle through until you've created a little knot on the front of the canvas (tip: as with step 3, keep hold of the thread with your non-needle hand and hold some tension. Let go once there is little to no thread left to hold)



fire and iris

Ta -Da! You've completed your wreath!

Stitch Guide – Floral wreath, thread version

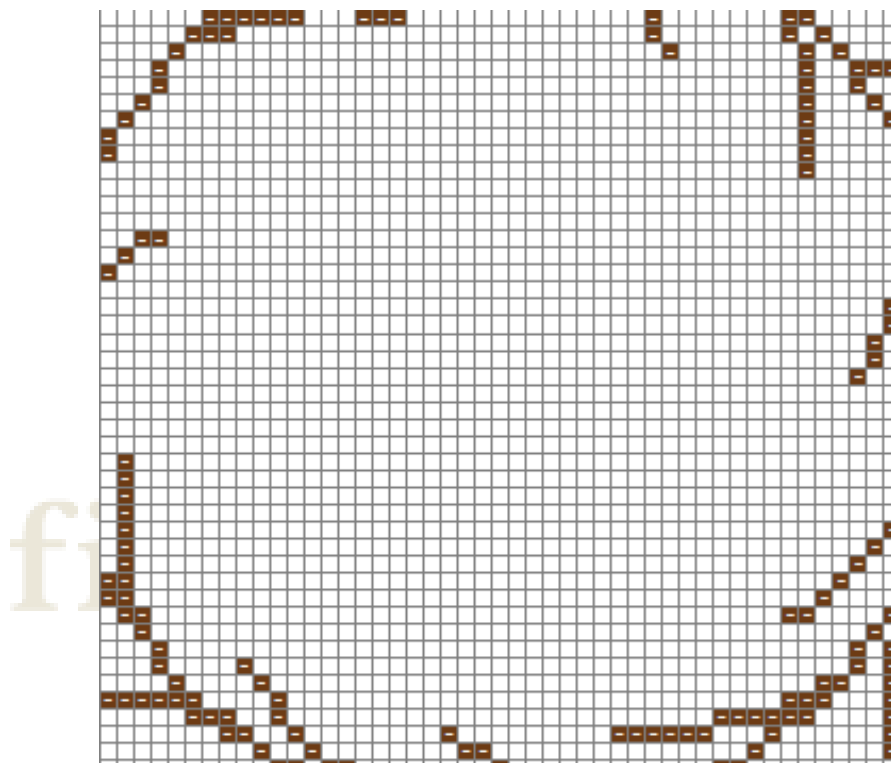
By: Fire and Iris Designs

Optional Add Ons:

Monogram:

If you'd like to add a monogram or lettering or numbers to the center of this wreath, I recommend adding this **before** you start stitching. You will want to stitch this when you stitch the background, and definitely prior to stitching the green portion of the wreath. Below is a chart you can use to help with placement of your monogram or lettering, prior to adding it to the canvas.

(Note: each box on the chart = 1 intersection on the canvas)



Beads and More:

If you like to bead, or want to give it a go, beads would be a wonderful touch. You could stitch individual beads to look like ornaments, or even string some beads together to look like a little garland within the wreath!

Supplies:

Beading needle
Clear beading thread
Seed beads, size 14/15 suggested

How to:

- Using a beading needle and beading thread/clear thread, anchor your thread on the back of the canvas and then bring your needle and thread up from the back of the canvas to the front of the canvas. (Note: it's important to make this switch to a beading needle and thread – the beads won't fit over the usual tapestry needle and needlepoint thread),
- Add a bead on to your needle
- Insert your needle into an adjacent hole on the canvas and pull your thread through
- Your bead should now be sitting on the top of your canvas

Stitch Guide – Floral wreath, thread version

By: Fire and Iris Designs

Optional Add Ons Cont.:

Charms would be another great addition. Many needlepoint shops carry them, and there are a variety of offerings from snowflakes, baubles, to even ones that look like little lights!

Bow:

Another fun touch! A bow could be added to the top, or bottom of the wreath, depending on your preference. For mine, I used River Silks (#161) 4mm, but any color ribbon would be gorgeous!

Supplies:

Ribbon
Tapestry needle, size #22
Beading needle
Clear thread

How to: (note: this is how I like to add a bow to my canvas. There are many ways to do this, so if you have a different/preferred method other than this one, please do so!)

1. Cut two pieces of ribbon. One approximately 4 inches in length, the other approximately 16 inches in length. (The second longer piece will serve as your bow, so cut this to your desired size. We're just providing a suggested length for this piece).
2. Anchor your ribbon. Using the smaller length of ribbon, bring your needle with the ribbon up from the back to the front of the canvas and leave a small tail of ribbon on the back of canvas. Make a single tent stitch and pull your needle and ribbon to the back of your canvas. This tent stitch should be placed where you would like the center of your bow positioned. On the back side of the canvas, pierce your needle through the small tail of ribbon you left when you started and pull your needle and ribbon all the way through. This will anchor your ribbon. Set this piece of ribbon aside for the moment (you'll pick this up in one of the last steps).
3. Take your longer piece of ribbon and thread your needle with it. In a space to the right of the tent stitch you just made, bring your needle with the ribbon down from the front of the canvas to the back of the canvas and leave a long tail. Then bring your needle back up just to the left of the tent stitch you previously made. Unthread your needle. You should now have two tails of ribbon on the front of your canvas that are positioned to the right and left of your ribbon tent stitch. Pull the tails of ribbon until they are approximately the same length. (photo below)



4. Make two loops with your ribbon (one with each tail) and make a bow (think the "bunny-ear method" to bow making). Adjust the loops and the tails until you are happy with the size and shape of the bow.

Stitch Guide – Floral wreath, thread version

By: Fire and Iris Designs

5. Take a beading needle and clear thread. Anchor this thread on the back of your canvas and bring it up just in front of the knot at the center of the bow. Pierce the center of the knot with your needle and thread as you bring the needle and thread to the back of canvas. Do this one more time and tie-off. I do this to secure the bow to the canvas and help make sure it doesn't come unraveled.
6. Next – take the smaller piece of ribbon (from step 2), thread it on your needle and bring it to the front of the canvas, just above the knot on the bow. Lay the ribbon over the center knot of the bow and make the stitch by bringing your needle and ribbon to the back of the canvas, just under the knot on the bow. Make sure the ribbon is laying flat over the center. Tie your ribbon off by piercing your needle through the small tail of ribbon you created at the start. I found this step is mostly cosmetic and helps to give the bow a nice clean look.
7. Cut the tails of your bow to your desired length. Remember to cut the ribbon on a diagonal - this helps to reduce fraying.

