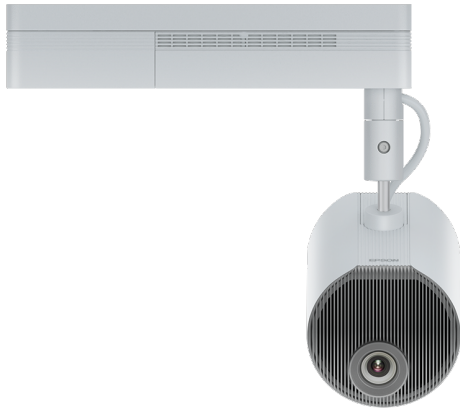
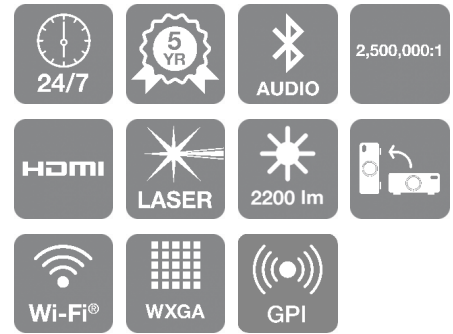


# LightScene EV-110



## DATASHEET / BROCHURE



The EV-110 is an innovative and versatile 2,200 lumens laser projection solution for creating experiential displays and digital signage.

Add movement and life to retail displays, hospitality events, visitor experiences, galleries, museums, corporate environments or exhibitions, with a low visual noise projector that blends into any environment. The EV-110 brings lighting and projection together, and perfectly combines high design, high image quality and installation flexibility.

### Minimalist design - maximum impact

The LightScene EV-110 allows users to unlock their creativity and project instantly appealing visuals, with sharp WXGA resolution and 2,200 lumens brightness. Thanks to its discreet design, it can be used where a traditional projector may stand out. A black version is also available.

### Simple, flexible implementation

A lightweight, adaptable design means the EV-110 can be installed in a variety of ways, from a traditional ceiling mount to a freestanding floor mount, or attached to a lighting track, including recessed lighting tracks.

### Signage-ready

Featuring a built-in media player with wireless content upload, allowing playlists to be loaded onto an SD card and played directly from the projector<sup>1</sup>. The EV-110 also features HDMI connectivity for simple integration into content management systems without specialist installation.

### Advanced installations made easy

The GPI function supports direct sensor connectivity for creating dynamic experiences that can adapt to situational changes without the need for costly external hardware. The EV-110 also uses advanced techniques such as edge blending to achieve stunning results in larger spaces that require multiple unit installations.

### Fit and forget reliability

A five-year warranty, combined with Epson's reliable laser light source technology and sealed optical engine, means that the EV-110 does not require regular maintenance.

## KEY FEATURES

- **Experiential projection**  
Create borderless content, lighting effects and blended displays with ease
- **Sensor-based content**  
GPI function for simple sensor-based experiences
- **Flexible installation**  
Can be ceiling-mounted, freestanding or attached to a lighting track
- **Signage-ready**  
Built-in media player and simple CMS integration
- **Fit and forget reliability**  
Durable Epson laser technology supported by a five-year warranty



# EPSON®

## PRODUCT SPECIFICATIONS

### TECHNOLOGY

Projection System	3LCD Technology
LCD Panel	0.59 inch with C2 Fine

### IMAGE

Color Light Output	2,200 Lumen- 1,100 Lumen (economy) In accordance with IDMS15.4
White Light Output	2,200 Lumen - 1,100 Lumen (economy) In accordance with ISO 21118:2020
Resolution	WXGA 2
Aspect Ratio	16:10
Contrast Ratio	2,500,000 : 1
Native Contrast	2,000 : 1
Light source	Laser
Laser Light source	20,000 hours Durability High, 30,000 hours Durability Eco
Keystone Correction	Manual vertical: $\pm 45^\circ$ , Manual horizontal $\pm 40^\circ$
Colour Reproduction	16.77 million colours

### OPTICAL

Throw Ratio	1.38 - 2.19:1
Zoom	Motorized, Factor: 1 - 1.58
Lens	Optical
Screen Size	30 inches - 150 inches
Projection Distance Wide	0.9 m - 4.5 m
Projection Lens F Number	1.51 - 1.92
Projection Lens Focal Length	18.2 mm - 28.4 mm
Projection Lens Focus	Motorized

### CONNECTIVITY

Interfaces	USB 2.0-A, USB 2.0 Type B (Service Only), Ethernet interface (100 Base-TX / 10 Base-T), Wireless LAN b/g/g 25GHz, HDMI in, Jack plug out, SD Card Slot, SD Card playback, Wireless LAN a/n (5GHz)
Network Protocol	HTTPS, IPv6, SNMP, ESC/VP.net, PLink

### ADVANCED FEATURES

Security	Wireless LAN security, Password protection
Other features	A/V mute, Auto Power On, Digital zoom, Edge Blending, Horizontal and vertical keystone correction, Image Shift, Long light source life, Quick Corner, Web Control, Web Remote
Video Color Modes	Dynamic, Normal
Projector control	via: Crestron, Crestron Integrated Partner, Crestron RoomView

### GENERAL

Power consumption	124 Watt - On mode power consumption (Normal) 149 Watt (Peak), 112 Watt (Eco), 0.4 Watt (Energy saving standby)
Supply Voltage	AC 100 V - 240 V, 50 Hz - 60 Hz
Product dimensions (default position)	530 x 470 x 250 mm (Width x Depth x Height)
Dimensions: Projection Unit	Ø175 x 260 mm (Depth)
Dimensions: Power Supply	361 x 110 x 65 mm (Width x Depth x Height)
Product weight	5 kg
Noise Level	Normal: 34 dB (A) - Economy: 22 dB (A)
Supported Temperature	Operation 5° C - 40° C, Storage -10° C - 60° C
Supported Humidity	Operation 20% - 80%, Storage 10% - 90%
Included Software	Epson Creative Projection, Epson Projector Content Manager
Options	Floor stand, Lighting track mount
Room Type / Application	Projection Mapping, Signage / Retail, Visitor Attraction
Positioning	Ceiling Mounted, Floor, Lighting Track, Wall Mounted
Colour	White

### OTHER

Warranty	60 months Carry in or 12,000 h Optional warranty extension available
----------	---

## LightScene EV-110

### WHAT'S IN THE BOX

- Cable cover
- Direct mount unit
- HDMI Cable Clamp
- Power cable
- Remote control incl. batteries
- User's Manual Set
- Hexagon wrench
- Safety wire set

---

## OPTIONAL ACCESSORIES

---

- Lighting Track Mount - ELPMB66W  
V12HA32040
- Floor Stand - ELPMB55W - EV-100  
V12H888W10

---

LightScene EV-110

---

## LOGISTICS INFORMATION

SKU	V11HA22040
EAN code	8715946689326
Country of Origin	China



For more information please contact:

Home users: 0343 90 37766  
Business users\*: 0871 42 37766  
Republic of Ireland: 01 436 7742  
Or visit us at <https://www.epson.co.uk/contactus>  
\* 10p per minute plus network extras.

Web: [www.epson.co.uk](http://www.epson.co.uk)  
[www.epson.ie](http://www.epson.ie)

1. Requires free Epson Projector Content Manager software or Epson Creative Projection app.

Trademarks and registered trademarks are the property of Seiko Epson Corporation or their respective owners.  
Product information is subject to change without prior notice.  
Last extracted: 2022-07-14

**EPSON**<sup>®</sup>