



# WIRELESS PRESENTATION TYPE-C DONGLE

## WP D002C User Manual



Hereby, iiyama Corporation declares that the radio equipment Type WP D002C is in compliance with Directive 2014/53/EU. The full text of the EU declaration of conformity is available at the following internet address: [www.iiyama.com](http://www.iiyama.com)

### DEVICE REQUIREMENTS

- Android receiver
  - **ESharePro app is installed and activated.**
  - Network : 2.4G/5G Wi-Fi hotspot or LAN or WLAN
- Sender
  - Windows PC : Win7 / Win8 / Win10
  - MacBook : Mac OS 9.0 or later
  - Chrome Book
  - Linux
  - Other devices with Type-C(DP ALT) output available

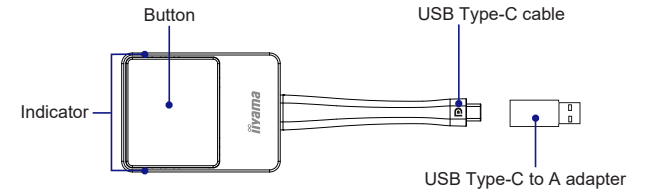
### SAFETY PRECAUTIONS

- Before using and operating this device, please read thoroughly and comply with the following precautions in order to prevent accidents or mal-operations.
- Do not charge or use the device in dusty or wet conditions, to prevent internal circuit failure.
- Keep the device away from heat sources such as an electric heater.
- This device and its parts may contain some small components, so keep the product out of reach of children to prevent accidents.
- This device is not water-resistant, please keep it dry.
- Please contact professional service personnel for maintenance services.
- Do not insert any sharp or pointed object into the device.
- Prevent the device from falls and collisions with other objects, which may cause damages.
- There are ventilation holes on back cover, do not spray water to it or use damp cloth for cleaning.

### CHECKING THE CONTENTS OF THE PACKAGE

- Wireless presentation Type-C Dongle
- USB Type-C to Type-A adapter
- User Manual

### NAME OF EACH PART



### SPECIFICATIONS

Model Name	WP D002C
Video outputs	DP1.2, HDCP compliant
Frame Rate	Up to 60 fps depending on environment (FHD) And 30 fps for UHD
Output resolution	720x480, 720x576, 1280x720, 1920x1080(1080P), 3840x2160@30Hz
Input resolution	Video: 480p, 576p, 720p, 1080p PC timing: 640x480, 800x600, 1024x768, 1280x720, 1920x1080, 3840x2160
Audio	Stereo, Radio quality 16bits 48kHz
Wireless	IEEE 802.11 b/g/n/a, 2.4GHz, 5.1GHz and 5.8GHz
Data rate wireless	Up to 300Mbps
Authentication protocol	WPA2(WPA2-PSK (Pre-Shared key) / WPA2-Enterprise)
Security(encryption)	WPA2

Support platform	Windows, MAC, Chrome Any OS that fully supports USB Type-C
Reach	Max. 20m
Cable	USB cable (Type-C)
Indicator	2 LED
Power Supply	DC 5V, 0.9A
Power Consumption	4.5W
Temperature range	Operating: 0°C to +40°C (+32°F to +104°F)
	Storage: -10°C to +60°C (+14°F to +140°F)
Humidity	Operating: 10% to 80% relative humidity, non-condensing
	Storage: 5% to 90% relative humidity, non-condensing

## INDICATOR STATUS

Indicator	Status	Indicator	Status	Indicator	Status	Indicator	Status
Off	Power Off	Static Green	Ready for casting	Static Blue	Casting	Flashing Red intermittently (on for 0.5 seconds, off for 1 second)	Obtain IP address failed/time out
Static White	Power On	Flashing Blue (1Hz)*	Pairing	Flashing Yellow (2Hz)*	Upgrading firmware		
Flashing Green (1Hz)*	Booting	Flashing Blue (2Hz)*	Connected to the WiFi network, but failed to communicate with Android receiver.	Flashing Red (1Hz)*	SSID not found	Flashing Red (0.5Hz)*	Dongle is connected but has no DP signal
Flashing Green (2Hz)*	Connecting			Flashing Red (2Hz)*	WiFi Password Error		

- \* 0.5Hz : Slow flashing  
1Hz : Moderately flashing  
2Hz : Rapidly flashing

## PAIRING

### ■ Pair with Android Receiver

#### <Auto Pair>

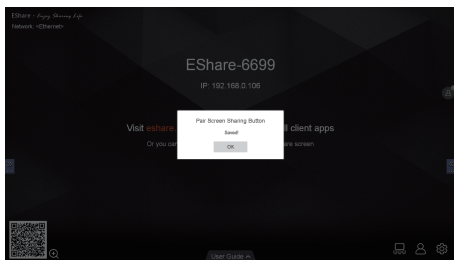
Requirements :

2.4G/5G Wi-Fi hotspot is enabled on the Android receiver. (Please refer to the online User Manual for detailed info on supported models.)

1. Plug the dongle into the USB port on the Android receiver, and the dongle will pair with the receiver automatically.

**NOTE** Please don't unplug the dongle while pairing.

2. "Saved!" is displayed when the dongle is paired. Tap the [OK] button to finish.



3. Unplug the dongle from USB port on the Android receiver.

\* Please use USB Type-C to A adapter if Android receiver do not have Type-C connector.

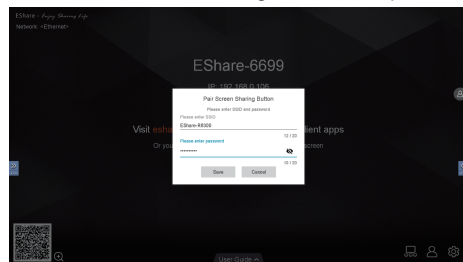
#### <Manually Pair>

Requirements :

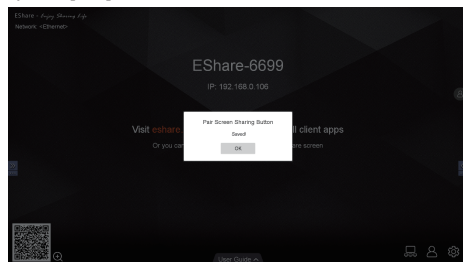
Android receiver is connected with LAN or WLAN.

1. Plug the dongle into the USB port on the Android receiver\*, and enter the Wi-Fi SSID and password of your office to associated with the receiver in the pairing dialog.

**NOTE** Recommend that you write down your Wi-Fi SSID and password. If the input is wrong, the receiver and dongle cannot be paired.



2. Check if the network information is entered correctly, and then tap the [SAVE] button.
3. "Saved!" is displayed when the dongle is paired. Tap the [OK] button to finish.



4. Unplug the dongle from USB port on the Android receiver.

## SHARE SCREEN

### ■ Share screen with Android Receiver

1. Plug USB-C cable of the paired dongle into the sender, the dongle indicator will blink in blue. And wait until the indicator turns permanent blue.
2. Press the button on the dongle to start screen sharing. And press the button on the dongle again to stop screen sharing.

### ■ Extend Screen

On the sender's operating system:

- 1) Go to the display settings.
- 2) Set the display mode as extended display

## CE Conformity for European Countries

This Wireless Presentation Type-C Dongle complies with the requirements of the EC/EU Directive 2014/53/EU "Radio Equipment Directive", and 2011/65/EU "RoHS Directive".

IYYAMA CORPORATION: Wijkmeesterstraat 8, 2131 HA Hoofddorp, The Netherlands

Function	Frequency	Maximum Output Power (EIRP)
WiFi	2412-2472 MHz	13.42 dBm
	2422-2462 MHz	13.33 dBm
	5180-5240 MHz	15.94 dBm
	5190-5230 MHz	15.91 dBm
	5745-5825 MHz	13.86 dBm
	5755-5795 MHz	13.86 dBm

## Following information is only for EU-member states

The mark shown to the right is in compliance with the Waste Electrical and Electronic Equipment Directive 2012/19/EU (WEEE). The full text of the EU declaration of conformity is available at the following internet address: [www.iiyama.com](http://www.iiyama.com)

The mark indicates the requirement NOT to dispose the equipment as unsorted municipal waste, but use the return and collection systems according to local law.



## SUPPORT LIST

Model	Latest available OTA version
LH4342UHS-B3	ESharePro_v7.3.0922 / iMirror_9.9.22.pro
LH5042UHS-B3	ESharePro_v7.3.0922 / iMirror_9.9.22.pro
LH5542UHS-B3	ESharePro_v7.3.0922 / iMirror_9.9.22.pro
LH6542UHS-B3	ESharePro_v7.3.0922 / iMirror_9.9.22.pro
LH7542UHS-B3	ESharePro_v7.3.0922 / iMirror_9.9.22.pro
LH8642UHS-B3	ESharePro_v7.3.0922 / iMirror_9.9.22.pro
LH3252UHS-B1	ESharePro_v7.3.0922 / iMirror_9.9.22.pro
LH4352UHS-B1	ESharePro_v7.3.0922 / iMirror_9.9.22.pro
LH5052UHS-B1	ESharePro_v7.3.0922 / iMirror_9.9.22.pro
LH5552UHS-B1	ESharePro_v7.3.0922 / iMirror_9.9.22.pro
LH6552UHS-B1	ESharePro_v7.3.0922 / iMirror_9.9.22.pro
LH3252HS-B1	ESharePro_v7.3.0922 / iMirror_9.9.22.pro
T4362AS-B1	ESharePro_v7.3.0922 / iMirror_9.9.22.pro
T5562AS-B1	ESharePro_v7.3.0922 / iMirror_9.9.22.pro
T6562AS-B1	ESharePro_v7.3.0922 / iMirror_9.9.22.pro
TE6502MIS-B1AG	ESharePro_v7.4.0719 / iMirror_10.2.6.pro
TE7502MIS-B1AG	ESharePro_v7.4.0719 / iMirror_10.2.6.pro
TE8602MIS-B1AG	ESharePro_v7.4.0719 / iMirror_10.2.6.pro
TE5503MIS-B1AG	ESharePro_v7.4.0719 / iMirror_10.2.6.pro
TE5503MIS-B2AG	ESharePro_v7.4.0719 / iMirror_10.2.6.pro
TE6503MIS-B1AG	ESharePro_v7.4.0719 / iMirror_10.2.6.pro
TE6503MIS-B1AG A	ESharePro_v7.4.0719 / iMirror_10.2.6.pro
TE7503MIS-B1AG	ESharePro_v7.4.0719 / iMirror_10.2.6.pro
TE7503MIS-B1AG A	ESharePro_v7.4.0719 / iMirror_10.2.6.pro
TE8603MIS-B1AG	ESharePro_v7.4.0719 / iMirror_10.2.6.pro
TE9803MIS-B1AG	ESharePro_v7.4.0719 / iMirror_10.2.6.pro
TE5504MIS-B3AG	ESharePro_v7.4.0719 / iMirror_10.2.6.pro
TE6504MIS-B1AG	ESharePro_v7.4.0719 / iMirror_10.2.6.pro
TE7504MIS-B1AG	ESharePro_v7.4.0719 / iMirror_10.2.6.pro
TE8604MIS-B1AG	ESharePro_v7.4.0719 / iMirror_10.2.6.pro
TE9804MIS-B1AG	ESharePro_v7.4.0719 / iMirror_10.2.6.pro
TE6504MIS-B2AG	ESharePro_v7.4.0719 / iMirror_10.2.6.pro
TE7504MIS-B2AG	ESharePro_v7.4.0719 / iMirror_10.2.6.pro
TE8604MIS-B2AG	ESharePro_v7.4.0719 / iMirror_10.2.6.pro
TE6504MIS-B3AG	ESharePro_v7.4.0719 / iMirror_10.2.6.pro
TE7504MIS-B3AG	ESharePro_v7.4.0719 / iMirror_10.2.6.pro
TE8604MIS-B3AG	ESharePro_v7.4.0719 / iMirror_10.2.6.pro

Model	Latest available OTA version
TE5512MIS-B1AG	ESharePro_v7.4.0719 / iMirror_10.2.6.pro
TE6512MIS-B1AG	ESharePro_v7.4.0719 / iMirror_10.2.6.pro
TE7512MIS-B1AG	ESharePro_v7.4.0719 / iMirror_10.2.6.pro
TE8612MIS-B1AG	ESharePro_v7.4.0719 / iMirror_10.2.6.pro
TE8612MIS-B2AG	ESharePro_v7.4.0719 / iMirror_10.2.6.pro
TE9812MIS-B1AG	ESharePro_v7.4.0719 / iMirror_10.2.6.pro
LH3254UHS-B1AG	ESharePro V7.3.1103/iMirror-9.9.22.pro
LH4354UHS-B1AG	ESharePro V7.3.1103/iMirror-9.9.22.pro
LH5054UHS-B1AG	ESharePro V7.3.1103/iMirror-9.9.22.pro
LH6554UHS-B1AG	ESharePro V7.3.1103/iMirror-9.9.22.pro
LH7554UHS-B1AG	ESharePro V7.3.1103/iMirror-9.9.22.pro
LH8654UHS-B1AG	ESharePro V7.3.1103/iMirror-9.9.22.pro
LH9854UHS-B1AG	ESharePro V7.3.1103/iMirror-9.9.22.pro

## Checking the OTA version

### ESharePro → Settings

