

ASUS®

MB165B

USB Monitor

User Guide

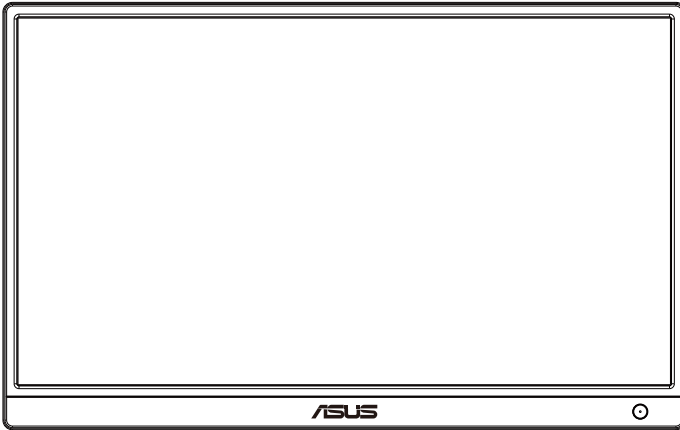


Table of contents

Notices	iii
Safety information	v
Care & cleaning	vii
Takeback services	viii
1.1 Welcome!	1-1
1.2 Package contents	1-1
1.3 Monitor introduction	1-2
1.3.1 Front view	1-2
1.3.2 Auto-Rotate	1-3
1.3.3 Brightness and Contrast Adjustment	1-3
2.1 Standing Positions	2-1
2.2 Connecting the USB cable	2-2
3.1 Specifications	3-1
3.2 Troubleshooting (FAQ)	3-2

Copyright © 2021 ASUSTeK COMPUTER INC. All Rights Reserved.

No part of this manual, including the products and software described in it, may be reproduced, transmitted, transcribed, stored in a retrieval system, or translated into any language in any form or by any means, except documentation kept by the purchaser for backup purposes, without the express written permission of ASUSTeK COMPUTER INC. (“ASUS”).

Product warranty or service will not be extended if: (1) the product is repaired, modified or altered, unless such repair, modification or alteration is authorized in writing by ASUS; or (2) the serial number of the product is defaced or missing.

ASUS PROVIDES THIS MANUAL “AS IS” WITHOUT WARRANTY OF ANY KIND, EITHER EXPRESS OR IMPLIED, INCLUDING BUT NOT LIMITED TO THE IMPLIED WARRANTIES OR CONDITIONS OF MERCHANTABILITY OR FITNESS FOR A PARTICULAR PURPOSE. IN NO EVENT SHALL ASUS, ITS DIRECTORS, OFFICERS, EMPLOYEES OR AGENTS BE LIABLE FOR ANY INDIRECT, SPECIAL, INCIDENTAL, OR CONSEQUENTIAL DAMAGES (INCLUDING DAMAGES FOR LOSS OF PROFITS, LOSS OF BUSINESS, LOSS OF USE OR DATA, INTERRUPTION OF BUSINESS AND THE LIKE), EVEN IF ASUS HAS BEEN ADVISED OF THE POSSIBILITY OF SUCH DAMAGES ARISING FROM ANY DEFECT OR ERROR IN THIS MANUAL OR PRODUCT.

SPECIFICATIONS AND INFORMATION CONTAINED IN THIS MANUAL ARE FURNISHED FOR INFORMATIONAL USE ONLY, AND ARE SUBJECT TO CHANGE AT ANY TIME WITHOUT NOTICE, AND SHOULD NOT BE CONSTRUED AS A COMMITMENT BY ASUS. ASUS ASSUMES NO RESPONSIBILITY OR LIABILITY FOR ANY ERRORS OR INACCURACIES THAT MAY APPEAR IN THIS MANUAL, INCLUDING THE PRODUCTS AND SOFTWARE DESCRIBED IN IT.

Products and corporate names appearing in this manual may or may not be registered trademarks or copyrights of their respective companies, and are used only for identification or explanation and to the owners' benefit, without intent to infringe.

Notices

Federal Communications Commission Statement

This device complies with Part 15 of the FCC Rules. Operation is subject to the following two conditions:

- This device may not cause harmful interference, and
- This device must accept any interference received including interference that may cause undesired operation.

This equipment has been tested and found to comply with the limits for a Class B digital device, pursuant to Part 15 of the FCC Rules. These limits are designed to provide reasonable protection against harmful interference in a residential installation. This equipment generates, uses and can radiate radio frequency energy and, if not installed and used in accordance with manufacturer's instructions, may cause harmful interference to radio communications. However, there is no guarantee that interference will not occur in a particular installation. If this equipment does cause harmful interference to radio or television reception, which can be determined by turning the equipment off and on, the user is encouraged to try to correct the interference by one or more of the following measures:

- Reorient or relocate the receiving antenna.
- Increase the separation between the equipment and receiver.
- Connect the equipment to an outlet on a circuit different from that to which the receiver is connected.
- Consult the dealer or an experienced radio/TV technician for help.

Canadian Department of Communications Statement

This digital apparatus does not exceed the Class B limits for radio noise emissions from digital apparatus set out in the Radio Interference Regulations of the Canadian Department of Communications.

This class B digital apparatus complies with Canadian ICES-003.



NOTE: This monitor is ENERGY STAR certified.

This product qualifies for ENERGY STAR in the factory default setting which can be restored by "Factory Reset" function in the OSD menu. Changing the factory default settings or enabling other features may increase power consumption that could exceed the ENERGY STAR specified limits.



Declaration of Conformity

This device complies with the requirements set out in the Council Directive on the Approximation of the Laws of the Member States relating to Electromagnetic Compatibility (2014/30/EU), Low-voltage Directive (2014/35/EU), ErP Directive (2009/125/EC) and RoHS directive (2011/65/EU). This product has been tested and found to comply with the harmonized standards for Information Technology Equipment, these harmonized standards published under Directives of Official Journal of the European Union.

WEEE Symbol Statement

This symbol on the product or on its packaging indicates that this product must not be disposed of with your other household waste. Instead, it is your responsibility to dispose of your waste equipment by handing it over to a designated collection point for the recycling of waste electrical and electronic equipment. The separate collection and recycling of your waste equipment at the time of disposal will help to conserve natural resources and ensure that it is recycled in a manner that protects human health and the environment. For more information about where you can drop off your waste equipment for recycling, please contact your local city office, your household waste disposal service or the shop where you purchased the product.



Safety information

- Before setting up this USB monitor, carefully read all the documentation that came with the package.
- To prevent fire or shock hazard, never expose this USB monitor to rain or moisture.
- Never try to open this USB monitor cabinet.
- Before using this USB monitor, make sure all cables are correctly connected and the power cables are not damaged. If you detect any damage, contact your dealer immediately.
- Avoid dust, humidity, and temperature extremes. Do not place this USB monitor in any area where it may become wet. Place this USB monitor on a stable surface.
- Never push objects or spill liquid of any kind into the slots on this USB monitor cabinet.
- If you encounter technical problems with this USB monitor, contact a qualified service technician or your retailer.
- This USB monitor is powered by USB port which complies with LPS and SELV circuit according to IEC60950-1:2005.

WARNING

Usage of other than specified head- or earphones can result in hearing loss due to excessive sound pressures.

Please confirm the distribution system in building installation shall provide the circuit breaker rated 120/240V, 20A (maximum).

If provided with a 3-pin attachment plug on the power cord, plug the cord into a grounded (earthed) 3-pin outlet. Do not disable the power cord grounding pin, for example, by attaching a 2-pin adapter. The grounding pin is an important safety feature.

Stability Hazard.

The product may fall, causing serious personal injury or death. To prevent injury, this product must be securely attached to the floor/wall in accordance with the installation instructions.

A product may fall, causing serious personal injury or death. Many injuries, particularly to children, can be avoided by taking simple precautions such as:

ALWAYS use cabinets or stands or installation methods recommended by the manufacturer of the product set.

ALWAYS use furniture that can safely support the product.

ALWAYS ensure the product is not overhanging the edge of the supporting furniture.

ALWAYS educate children about the dangers of climbing on furniture to reach the product or its controls.

ALWAYS route cords and cables connected to your product so they cannot be tripped over, pulled or grabbed.

NEVER place a product in an unstable location.

NEVER place the product on tall furniture (for example, cupboards or bookcases) without anchoring both the furniture and the product to a suitable support.

NEVER place the product on cloth or other materials that may be located between the product and supporting furniture.

NEVER place items that might tempt children to climb, such as toys and remote controls, on the top of the product or furniture on which the product is placed.

If the existing product is going to be retained and relocated, the same considerations as above should be applied.

Care & cleaning

- Cleaning. Turn your monitor off and unplug the power cord. Clean the monitor surface with a lint-free, non-abrasive cloth. Stubborn stains may be removed with a cloth dampened with mild cleaner.
- Avoid using a cleaner containing alcohol or acetone. Use a cleaner intended for use with the LCD. Never spray cleaner directly on the screen, as it may drip inside the monitor and cause an electric shock.

The following symptoms are normal with the monitor:

- You may find slightly uneven brightness on the screen depending on the desktop pattern you use.
- When the same image is displayed for hours, an afterimage of the previous screen may remain after switching the image. The screen will recover slowly or you can turn off the Power Switch for hours.
- When the screen becomes black or flashes, or cannot work anymore, contact your dealer or service center to fix it. Do not repair the screen by yourself!

Conventions used in this guide



WARNING: Information to prevent injury to yourself when trying to complete a task.



CAUTION: Information to prevent damage to the components when trying to complete a task.



IMPORTANT: Information that you **MUST** follow to complete a task.



NOTE: Tips and additional information to aid in completing a task.

Where to find more information

Refer to the following sources for additional information and for product and software updates.

1. **ASUS websites**

The ASUS websites worldwide provide updated information on ASUS hardware and software products. Refer to **<http://www.asus.com>**

2. **Optional documentation**

Your product package may include optional documentation that may have been added by your dealer. These documents are not part of the standard package.

Takeback services

ASUS recycling and takeback programs come from our commitment to the highest standards for protecting our environment. We believe in providing solutions for our customers to be able to responsibly recycle our products, batteries and other components as well as the packaging materials.

Please go to **<http://csr.asus.com/english/Takeback.htm>** for detail recycling information in different region.

Product information fro EU energy label



1.1 Welcome!

Thank you for purchasing the ASUS® USB monitor!

The latest ASUS USB monitor provides great portability and simplicity to your daily life, enhancing both of your viewing experience and style.

1.2 Package contents

Check your package for the following items:

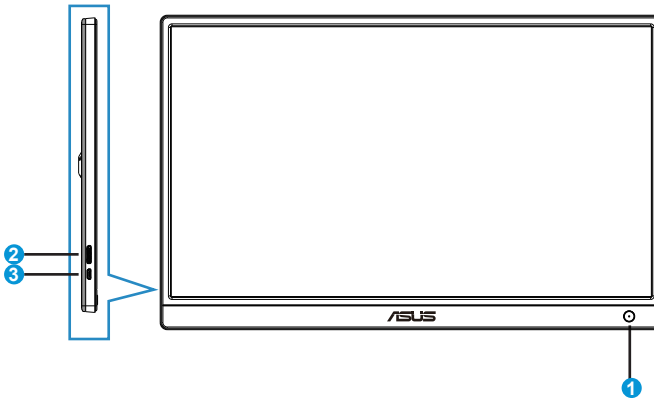
- ✓ USB Monitor
- ✓ Quick Start Guide
- ✓ Warranty Card
- ✓ Micro B USB 3.0 Cable
- ✓ Protective Sleeve



-
- If any of the above items is damaged or missing, contact your retailer immediately.
-

1.3 Monitor introduction

1.3.1 Front view



1. Power Button/Power Indicator

- Press this button to turn the monitor on or off.
- The color of the power indicator defines as the below table.

Status	Description
Blue	ON
Amber	Standby mode
Dark	OFF

2. Micro B USB 3.0 Port

- Connect it to your PC/NB by inbox cable.

3. Micro B USB 2.0 Port

- When the connected PC/NB has no sufficient power supply to USB monitor by USB 3.0 only, this port can be used to providing extra power to the monitor.

1.3.2 Auto-Rotate

Our USB monitor is equipped with **G-sensor** to detect its real-time position. The screen shot will automatically change from landscape to portrait position, or vice versa, depending on monitor's current position.

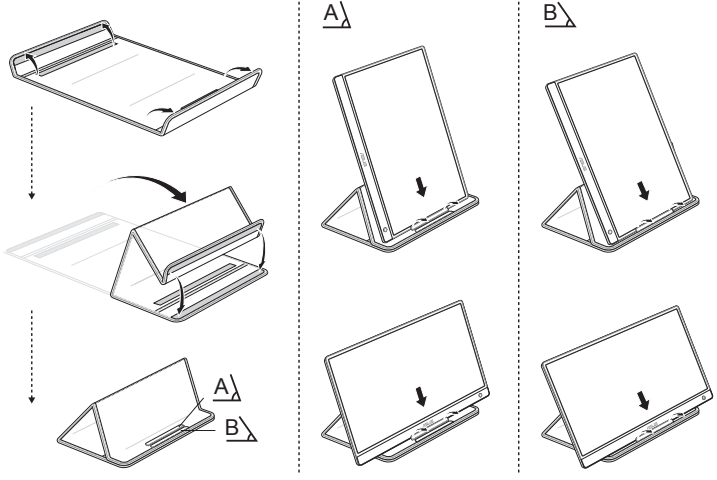
1.3.3 Brightness and Contrast Adjustment

The brightness and contrast ratio of the monitor can be adjusted by the DisplayWidget software.



- Auto rotation/Brightness adjustment/Contrast adjustment are supported by software DisplayWidget and **only** working under **Windows OS**, please go to www.asus.com and search for MB165B product page. Find the "Support" tab of product page, then choose "Driver & Tool"; download and install the latest DisplayWidget tool for the functions.
-

2.1 Standing Positions

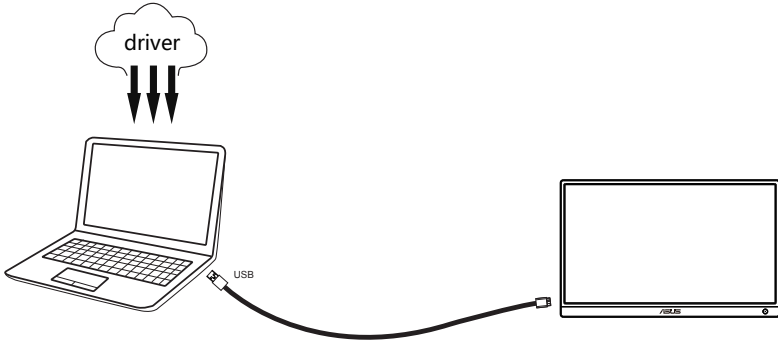


2.2 Connecting the USB cable

MUST Download and install the driver before connecting the MB165B to your PC/laptop. You may need to restart your Windows after driver installation, to properly activate MB165B.

For the latest driver, please go to

https://www.asus.com/us/Displays-Desktops/Monitors/ZenScreen/ZenScreen-MB165B/HelpDesk_Download/



3.1 Specifications

Model	MB165B
Panel Size	15.6" (16:9, 39.62cm) wide screen
Resolution	1366 x 768
Brightness (Typ.)	220 cd/m ²
Contrast (Typ.)	500:1
Display Colors	262 K
Digital Input	USB 3.0
Colors	Black
Power Consumption	≤ 7 W
Operating Temp.	0° ~ 40°
Phys. Dimension (WxHxD)	360.14 x225.64x11.8mm
Box Dimension (WxHxD)	434 x 290 x 76 mm
Net Weight (Esti.)	0.78 kg
Gross Weight (Esti.)	1.65 kg
Regulation Approvals	cTUVus, CB, CCC, EuP, BSMI, EAC(CU), RoHS, WEEE, J-MOSS, CE, FCC, KCC, VCCI, RCM, Energy Star 8.0

*Specifications are subject to change without notice.

3.2 Troubleshooting (FAQ)

Problem	Possible Solution
Power LED is not ON	<ul style="list-style-type: none">• Press the ⏻ button to check if the monitor is in the ON mode.• Check if the USB cable is properly connected to the monitor and the power outlet.
The power LED lights amber and there is no screen image	<ul style="list-style-type: none">• Check if the monitor and the computer are in the ON mode.• Make sure the USB cable is properly connected between the USB monitor and the computer.• Inspect the signal cable and make sure none of the pins are bent.• Connect the computer with another available monitor to check if the computer is properly working.
Power LED and the screen is continuously turning on and off	<ul style="list-style-type: none">• Make sure the USB cable is properly connected between the USB monitor and the computer via Micro B USB 3.0 port.• Connect other valid power source (from adapter/PC/Laptop/Power bank) to USB monitor via Micro B USB 2.0 port in order to provide extra power for the monitor.
Screen image bounces or a wave pattern is present in the image	<ul style="list-style-type: none">• Make sure the USB cable is properly connected between the USB monitor and the computer.• Move electrical devices that may cause electrical interference.
Screen image has color defects (white does not look white)	<ul style="list-style-type: none">• Inspect the USB cable and make sure that none of the pins are bent.