

Dismantling information

The document is intended for use by end-of-life recyclers or treatment facilities. It provides the basic instructions for the disassembly of LG products to remove components and materials requiring selective treatment.

Product Identification

Type of Product	Monitor
Model name	32UN650

Displays must be stored in accordance with the requirements stipulated in Appendix VIII (1) or (2) of Directive 2012/19/EU and must, amongst other things, be stored in a weatherproof manner. Containers with covers must be used when storing and transporting the Displays.

Contents




- 1. Materials and components for Selective Treatment**
- 2. Tools Required**
- 3. Product Disassembly Process**
- 4. Disassembly of External enclosure**

1. Materials and components for Selective Treatment

Materials and components	Notes	Included
Printed Circuit Boards (PCB) or Printed Circuit Assemblies (PCA)	With a surface greater than 10 square cm	○
Batteries	For Remote control	-
	Internal batteries	-
Mercury containing components	display backlights	-
Liquid Crystal Displays (LCD) with a surface greater than 100 square cm	Includes background illuminated displays with gas discharge lamps	○
Capacitors / condensers (Containing PCB / PCT)		-
Electrolytic Capacitors / Condensers measuring greater than 2.5 cm in diameter or height		○
External electric cables cords	Power cord	○
	Signal cable	○
Gas Discharge Lamps		-
Plastics containing Brominated Flame Retardants		-
Components and waste containing asbestos		-
Components, parts and materials containing refractory ceramic fibers		-
Components, parts and materials containing radioactive substances		-

2. Tools Required

List the type that would typically be used to disassemble the product to a point where components and materials requiring selective treatment can be removed.

Tool Description	Tool information
Screw driver	
Nipper	
Plastic Hera Jig	

3. Product Disassembly Process

1. Batteries

No battery.

3. Product Disassembly Process

2. PCBs and LCD Module

The back cover of the display can easily be removed by hand and screw driver.



Once removed this will expose the accessible electronic units (PCBs),



which can now be easily removed with hand and screw driver.



LCD module(together with their casing) is only left after all other parts like electronic units and casing have been removed.



3. Product Disassembly Process

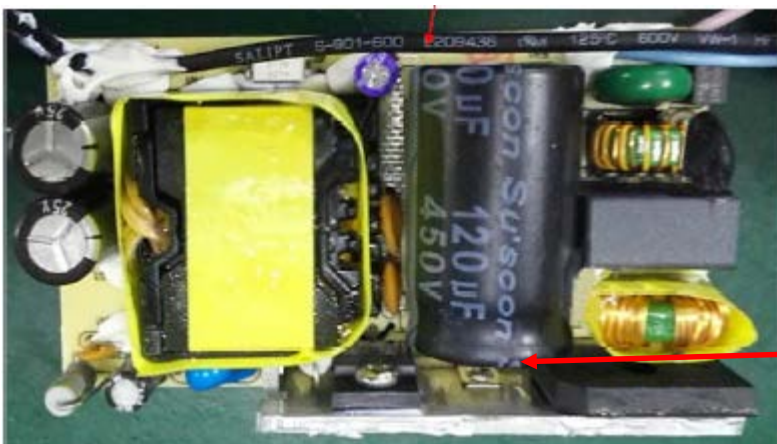
3. Power cord and signal cables

A Power cord plugged into the back of the display can easily be removed by hand or cables are provided as de-attached from the product



4. Capacitors > 25 mm

Capacitors > 25 mm are located in the power supply units and can be removed by nipper



4. Disassembly of External enclosure

Unscrew the stand base by using coin



Push button and lift the stand

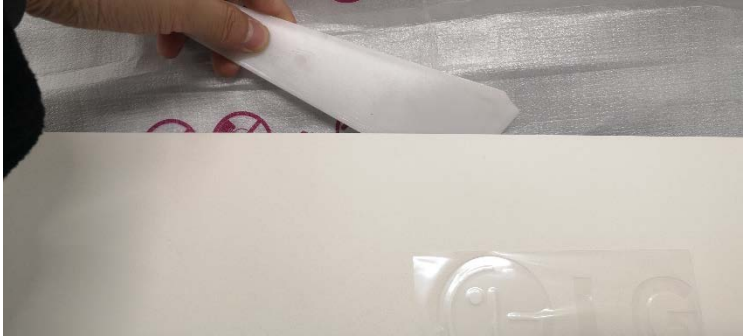


Overturn the set use jig to disassemble backcover

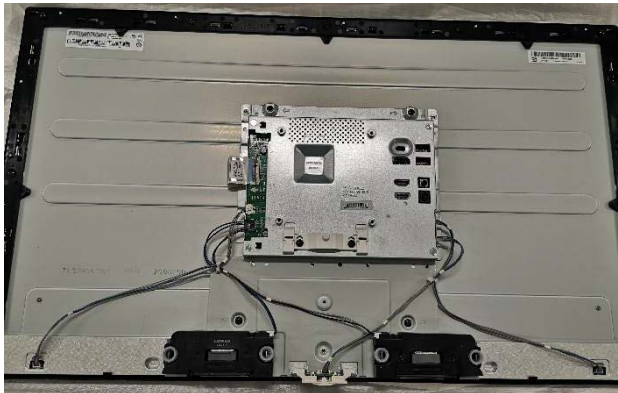


4. Disassembly of External enclosure

Disassemble the back cover



Re-overturn the set and disassemble screw 4EA and disassemble the PCB and speaker



LCD Module

