

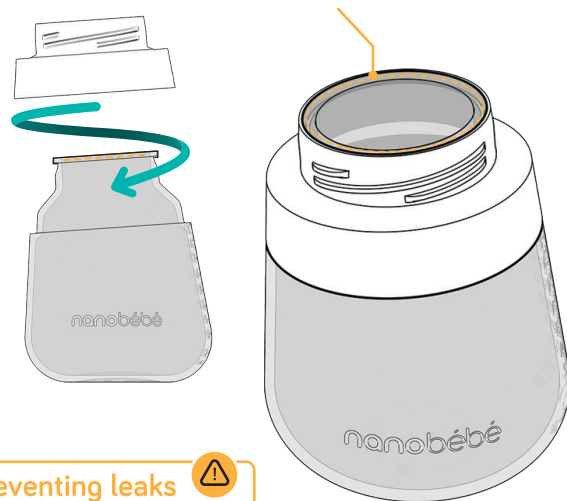
BREAST MILK IS THE BEST FOOD FOR YOUR BABY

# How to Assemble your nanobébé<sup>®</sup> Flexy Silicone Bottle



## Step 1

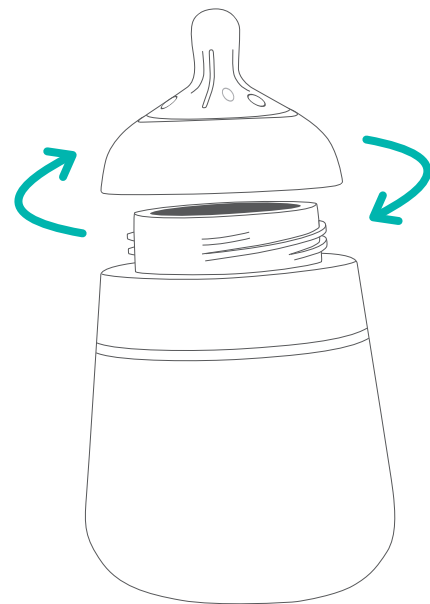
Connect neck ring to silicone body by **pressing & twisting** until silicone sealing lip **pops through neck ring**.



Preventing leaks 

## Step 2

Insert teat into its ring and twist onto bottle. **Secure tightly**.



# Grows with your baby



**QUICK SNAP**  
Flexy Bottle  
Handles

\*handles sold separately

## FOR YOUR CHILD'S SAFETY AND HEALTH

### ENGLISH

Always use this product with adult supervision. Accidents have occurred when babies have been left alone with drinking equipment due to the baby falling or the product being dissembled. Always check food temperature before feeding by testing on a sensitive part of your skin, the back of your wrist for example. When using formula, follow the formula milk manufacturer's instructions and allow the freshly boiled water to cool before pouring into the bottle. Never use feeding teat as a pacifier. Continuous and prolonged sucking of fluids can cause tooth decay. Tooth decay in young children can occur even when non-sweetened fluids are used. This can occur if the baby is allowed to use the bottle for long periods through the day and particularly through the night, when saliva flow is reduced or if the bottle is used as a pacifier. Do not heat in microwave.

### ISIZULU

Sebenzisa lo mkhiqizo ngaso sonke isikhathi ugadwe umuntu omdala. Kwenzeke izingozi lapho kushiye khona abantwana bodwa nensiza yokuphuzwa ngenxa yokuwa kwabantwana noma ukukhumuka komkhiqizo. Hlola ngaso sonke isikhathi izinga lokushisa lokudla ngaphambi kokupha umntwana ukudla ngokukuhlola endaweni ezwela kakhulu yesikhumba sakho, isibonelo ingemuva lesihlakala sakho. Uma usebenzisa ubisi lwabantwana oluyimpuphu, landela imiyalelo yomkhiqizo wobisi lwabantwana oluyimpuphu futhi uvumele ukuthi amanzi asanda kubiliswa aphole ngaphambi kokuthi uwathele ebhodleleni. Ungasebenzisi umncumu (teat) njengedami (pacifier). Ukubola kwamazinyo ezingane ezincane kungezeka noma ngabe kungasetshenziswa okuphuzwayo okunoshukela. Lokhu kungenzeka uma umntwana evuyelwa ukuthi asebenzise ibhodlela isikhathi eside osukwini futhi ikakhulukazi ebusuku, lapho ukuhamba kwamathe kwehleli noma uma ibhodlela lisetshenziswa njengedami (pacifier). Ungalifudumezi ku-microwave.

## CLEANING AND STERILIZATION

### ENGLISH

Before each use, clean the product by immersing in boiling water for at least 5 minutes. Always clean immediately after use. To clean, place in a dishwasher (top rack only) or use the nanobébé cleaning brush and hot soapy water. Rinse in clean water. Dishwasher safe – food colourings may discolour products. Do not use abrasive cleaning agents or anti-bacterial cleaners. Do not allow product to come into contact with oil-based foods since staining may result. Do not turn the teat inside out as this may result in damage. Do not insert any cleaning implements into the hole in the end of the teat nor in the teat vents since doing so may result in damage. Before first use, sterilize the teat either by placing in boiling water for 5 minutes or by using the nanobébé Microwave Steam Steriliser. Failure to sterilise correctly may harm your baby's health.

### AFRIKAANS

Die produk moet voor elke gebruik skoongemaak word deur dit vir ten minste 5 minute in kookwater te dompel. Maak dit ook onmiddellik na elke gebruik skoon. Om dit skoon te maak kan dit in 'n skottelgoedwasser [slegs in die boonste rak] geplaas word of daar kan van die nanobébé skoonmaakborsel en seepwater gebruik gemaak word. Spoel met skoon water uit. Skottelgoedwasser veilig – voedselkleursel mag die produk verkleur. Moenie skoonmaakmiddels wat skuur of antibakteriële skoonmaakmiddels gebruik nie. Moenie die produk toelaat om in kontak te kom met olie-belaaide kos nie aangesien dit vlekke mag veroorsaak. Moenie die tuit omdop nie aangesien dit skade mag veroorsaak. Moenie enige skoonmaakimplemente in die gaatjie aan die punt van die tuit of enige van die luggate druk nie aangesien dit skade mag veroorsaak. Minute in kookwater te dompel of deur die nanobébé Mikrogolf Stoom Steriliseerder te gebruik. Verkeerde sterilisasie, kan u baba se gesondheid benadeel.

### SINDEBELE

Ngaphambi kokhunyeka ukusebenzisa, ihlengise ngokuyifaka ngemanzini abilako ubuncani bakhona imizuzu emi-5. Hlala uyihlwengisa msinyana ngemva kokuyisebenzisa. Ukuyihlwengisa, ifake ngaphakathi kweshlanzi-zitja (ngerageni engaphezulu kuphela) namkha sebenzisa ibhrajhi yokuhlengisa ye-nanobébé kanye namanzi atjhisako anesibha. Ipule ngamanzi ahlwengileko. Iphephile nawuyihlwengisa ngesihlanzi-zitja – iimfakimibala ekudleni zingayikhupha umbala imikhqizo. Ungasebenzisi iinsetjenziswa zokuhlengisa ezikhulubalako namkha iinhlwengisi ezilwiswa nebhaktheriya. Ungavumeli umkhiqizo uhlangane nokudla okunamafutha ngombana ungavela amabala. Ungaphenduleli idemu ngombana lokhu kungabanga umonakalo. Ungafaki iinsetjenziswa zokuhlengisa ngetjhubeni elisekupheleni kwedemu namkha ngematjhubeni wedemu ngombana ukwenza njalo kungabanga umonakalo. Ngaphambi kokuyisebenzisa kokuthoma, bulala umulwana idemu ngokuyibeka ngemanzini abilako ubuncani bakhona imizuzu emi-5 namkha ngokusebenzisa iSibulalimulwana seSitimu se-microwave se-nanobébé. Ukubhalelwa kubulala umulwana ngefanelo kungathinta kumbi ipilo yesana lakho.

### ISIZULU

Before each use, clean the product by immersing in boiling water for at least 5 minutes. Always clean immediately after use. To clean, place in a dishwasher (top rack only) or use the nanobébé cleaning brush and hot soapy water. Rinse in clean water. Dishwasher safe – food colourings may discolour products. Do not use abrasive cleaning agents or anti-bacterial cleaners. Do not allow product to come into contact with oil-based foods since staining may result. Do not turn the teat inside out as this may result in damage. Do not insert any cleaning implements into the hole in the end of the teat nor in the teat vents since doing so may result in damage. Ngaphambi kokusebenzisa okokuqala, bulala amagciwane kumncumu (teat) ngokwenza okukodwa phakathi kokuwufaka emanzini abilayo imizuzu emi-5 noma ngokusebenzisa i-nanobébé Microwave Steam Steriliser. Ukwehleleka ukubulala amagciwane ngendlela efanale kungalimaza impilo yengane yakho.

### ISIXHOSA

Phambi kokuba uyisebenzise, yicoce ngokuyifaka emanzini abilileyo ithuba elingange mizuzu emihlanu lcoocwa rhoqo emveni kokuba isebenzile.Indlela yokuyicooca, yifake kumatshini wohlamba izitya ( ngaphezulu kuphela) okanye usebenzise i- nanobébé brush kwakunye namanzi anesepha. Uyipure emanzini acocekileyo. Iklungele ukuba kumatshini wohlamba izitya – ukutya okuthile kungayijika umbala. Ungasebenzisi izibulali-ntsholongwane ezirhabaxa okanye ezinobuzaza. Ungavumeli ukuba idibane kunye nokunye ukutya okwenziwe nge-oli kuba ingashiya amabala. Ungaphethuli ngaphakathi nangaphandle ititi kuba ingamoshakala. Ungafaki zixhobo zokuklina emngxunyeni we-titi kuba xa usenza njalo ungenza umonakalo. Phambi koba uyisebenzise, bulala iintsholongwane kwi titi ngokuthi uyifake emanzini abilileyo imizuzu emihlanu okanye ngosebenzisa i-nanobébé Microwave Steam Sterilizer. Ukungayicooci ngokufanelekileyo kungabeka impilo yosana lwakho ebungciphekweni.

### SESOThO

Pele ho tshbediso e nngwe le e nngwe, hlwekisa sesebediswa ka ho se kenya kahara metsi a belang bonyane bakeng sa metsotso e 5. Kamehla o e hlwekise hang kamora tshbediso. Ho e hlwekisa, e behe kahara motjhini o hlatswang dijana (rakeng e kahodimo feela) kapa o sebedise borashe ba nanobébé ba ho hlwekisa le metsi a sesepe a tjhesang. Pudutsa ka metsi a hlwekileng. E bolokehile ho ka hlwekiswa ka motjining wa dijana – mebala ya dijo e ka tlotsa dihlahiswa. O seke wa sebedisa disepa tse ngwapang kapa dihlekwisi tse bolayang dikokwanahloko. O seke wa dumella sehlahiswa ho thetsana le dijo tse thehilweng hodima oli hobane di ka fetola mmala wa yona. O seke wa hlanola thoko hobane sena se ka e senya. O seke wa kenya dinto ho tse hlwekisang kahare ho lesoba la thoko kapa mapetsong a thoko hobane ho etsa jwalo ho ka baka tshenyho. Pele ho tshbediso ya pele, bolaya mahloko thoko ka ho e kenya kahara metsi a belang bakeng sa metsotso e 5 kapa ka ho sebedisa Sebolaya-mahloko sa Maekroweive sa nanobébé. Tholeho ya ho hkwekisa ka nepo ho ka beha bophelo ba lesele la hao kotsing.

## MAINTENANCE:

- Before each use, inspect all items.
- Pull the teat in all directions.
- Throw away at first signs of damage or weakness.
- Do not leave a teat in direct sunlight or heat, or leave in disinfectant (“sterilizing solution”) for longer than recommended, as this may weaken the teat.
- Do not store with or allow to come into contact with solvents or harsh chemicals.
- Keep all parts not in use out of reach of children.
- For safety and hygiene reasons we recommend that the teat be replaced at least every two months.
- Excessive concentration of detergents may eventually cause plastic components to crack.
- If not in use for over a week the nanobébé Flexy bottle should be stored disassembled.

## Warning!

If you are breastfeeding your baby, using a feeding bottle and teat may interfere with the baby's natural way of suckling your breast.

Visit us at

[www.nanobebe.co.za](http://www.nanobebe.co.za)

Share your nanobébé moments with us!



@nanobebeZA



@nanobebeZA



@nanobebeworld



@nanobebe

Distributed in South Africa by:  
Bacher & Co (PTY) LTD  
5 – 7 Ayrshire Avenue,  
Longmeadow, Modderfontein  
1645, Johannesburg  
+27 372 6000 | [www.bacherco.co.za](http://www.bacherco.co.za)

Made in  
China for Nutrits Ltd.  
P.O. Box 7239  
Tel Aviv, Israel 6107121  
G10-00432-19