



Smart IP Camera

Quick Guide

Email: support@hiseeu.com

Whatsapp: +8618126465980

Web: www.hiseeu.com

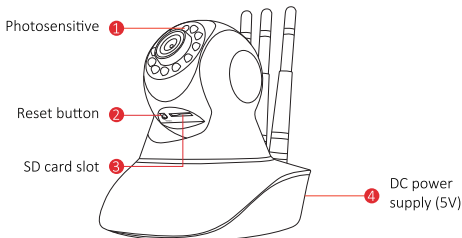
※ Please read the Quick Guide carefully before using the product and keep it properly.

Device Installation and Configuration

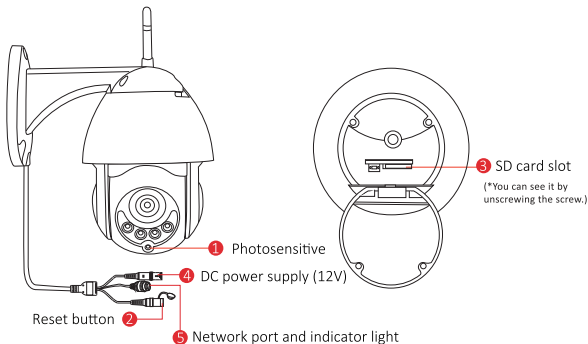
This manual is suitable for various types of cameras.

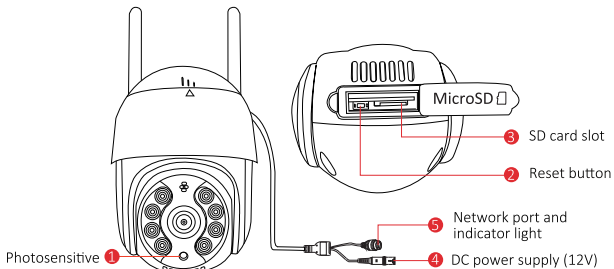
(The appearance may be different due to different batches. The details are subject to the receipt. This manual is only for the installation instructions of this series of equipment.)

1. WiFi Home Camera

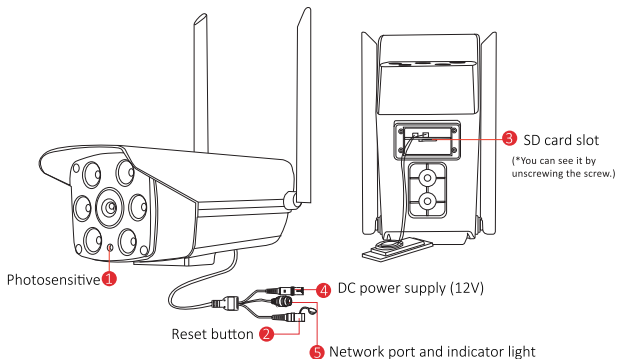


2. PTZ WIFI IP Dome Camera





3. WIFI IP Camera Outdoor



Description

- | | |
|-------------------------------------|--------------------------------------------------------------------------------------------------------------------------------|
| 1. Photosensitive | Collect ambient luminosity value, turn on the infrared light when the current illuminance is less than 3 Lux. |
| 2. Reset button | The working state of the device, long press 3-5 seconds to restore the factory, the camera will have a voice prompt broadcast. |
| 3. SD card slot | TF card, storage video and playback video. |
| 4. DC power supply | Power input |
| 5. Network port and indicator light | Connect the Lan cable and check the current device status indicator light. |

Software Installation

1. APP Download and Installation

Users can search “ ICSee ” on APP store or on Google Play,or scan the QR code below to install the APP.



ICSee APP

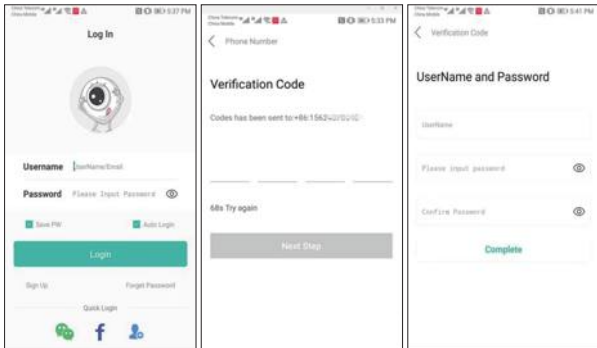


APP download

Note: For iOS system, it requires iOS 8.0 version or above.
For Android,Version:V2.0.2. or above.

2. Register Account

- (1) Go to login interface, click " sign up "
- (2) Register with your phone number or email address, click "confirm ", a verification code will send to your email or your phone
- (3) Input the verification code and set up your own password, then click "confirm" to complete.



Add process

A. Wi-Fi Smart Connection (5GHz WiFi is not supported, all kinds of cameras can use)

Power on the device ,go to reset camera ,Wait about 30 seconds .Start up of Voice prompt.

1. Click “ + ”, add WIFI camera
2. In 2.4 GHz WIFI network , click “ Next Step ”
3. In Router setting , enter your WIFI password, click “ confirm ” to complete.

4. Searching Device , please kindly wait . camera will sound “wait to configurate”;

5. If can't find device , please click QR code to toward the device--- keep a distance of 20 to 30 cm, waiting for scanning stably--- hear the device prompt--- finally hear the device prompt configuration successful;

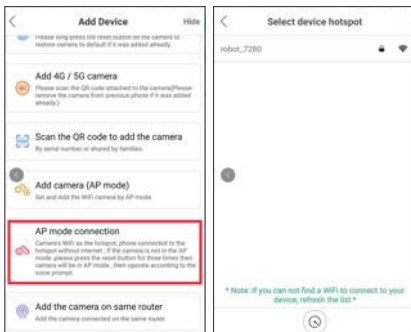
6. Set password for device.



B. AP mode connection (all kinds of cameras can use)

Power on the device , go to reset camera , Start up of Voice prompt, then click reset button over 3 times ,you will find a sound “ entry AP mode ”.

1. Go to ICsee APP , click “+ ” --- Click “ AP mode connection ”
2. Auto search device hotspot---default no password , just need to refer to APP notice to add step by step
3. Find the camera’s hotspot named “ robot_ ”--- Click it--- Connection successful

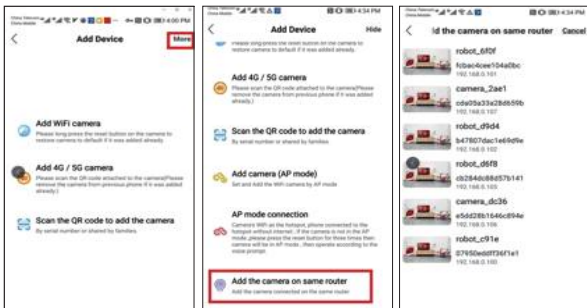


C. Add the camera on same router (which has wired port)

PS:use a LAN cable to connect camera with your router , keep phone connecting WIFI , which is on same gateway with camera

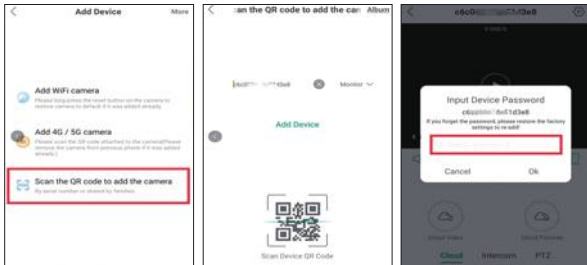
1. Click “ + ” , add device
2. Click “ More ”
3. Click “ Add the camera on same router ”

- Find the device named robot-xxx , then click it
- Connection successful



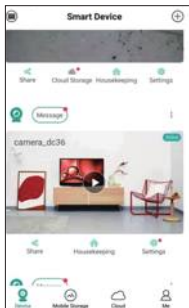
Share to second phone

- Go to “ scan the QR code to add the camera”
- Enter device ‘ s serial number (serial number is on version page)
- Click “ Add device ”
- Enter password



View Alarm , Preview and Playback

1. Click “ Message” to view the alarm information of the camera
2. Click the corresponding play icon on the device list to enter the preview interface to view real-time video and have voice intercom.



Device



Real-time video



Playback video



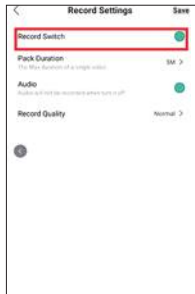
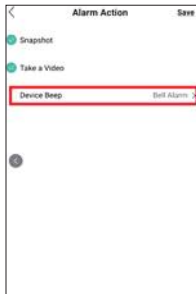
Alarm information



3. Click the playback or cloud icon to view the video which is on the device or in the cloud. (some cameras don't support cloud service)

Motion Detection Alarm

With the function on, the App will push an alarm message to you when a motion is triggered. Click "Settings" and choose "Smart Alarm", open "Smart Alarm", "Alarm Push" and "Alarm Action", take a video and snapshot ". If you want to enable alarm sound, enable "Alarm Action", "Device Beep", if not, pls disable it. If you want to set a period for motion detect, pls click "Alarm Time" to set. For record Setting, please Enable.

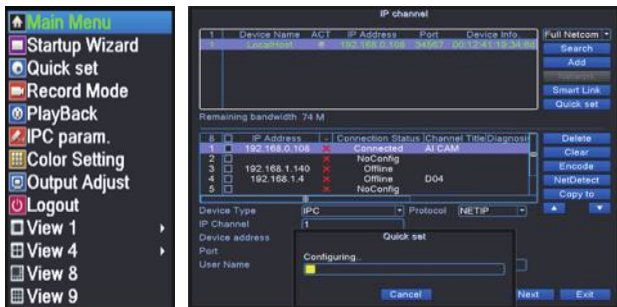


If you think there are too many alarms for motion detect, just want to detect people alarm. please turn on "Human Shape Detection", it will decrease extra wrong alarm. (Human Shape Detection just some type of camera support)

How to connect with NVR ?

A. How to connect with NVR which support NETIP protocol

1. Please connect camera on the same gateway with NVR , they must work on the same router ,
2. Right-click mouse→Quick Set (NVR will be configuring automatically)



3. If your camera still not connected, please manual add as below.
 - a) Click “ Search ”, NVR will search camera with same IP segment , then select the new camera ’ s IP address
 - b) Select an empty Channel for the new camera (for example #5), then click “ Add ”
 - c) Protocol : NETIP Port : 34567 User name : admin Password : as you set on APP
 - d) After configuration successful , click “ Apply ” to save settings then click “ Exit ” .

B. How to connect NVR which support ONVIF protocol

The camera support ONVIF protocol, compatible with third-party NVR like Hikvision, Dahua, etc.

- a. First connect camera on ICSee APP, then set your password and confirm NVR work on the same gateway with camera

- b. Then go to your NVR 's IP channel to search camera's IP address
- c. Protocol : **ONVIF** Port : **8899** User name : **admin** Password :
- as you set on APP
- d. Click Add

Remote Access on PC Client

Please contact vendor for PC Client download Link and video instruction. (<https://download.xm030.cn/d/MDAwMDA2NDE=>)

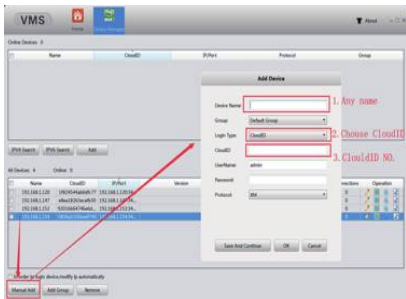
1. Download PC Client “VMS” and installed
2. Remain the default User Name and Password. Click “SIGN IN”



3. “Device Manager”

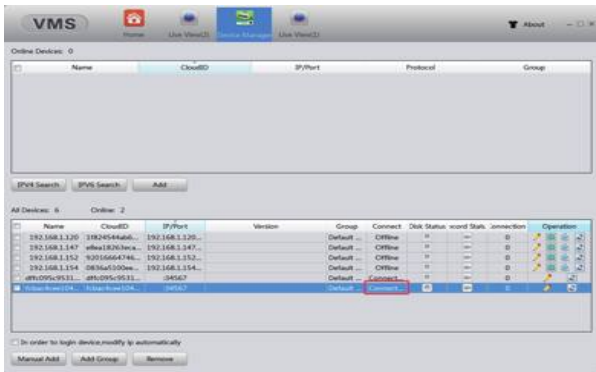


4. Manual Add,Enter CloudID Number

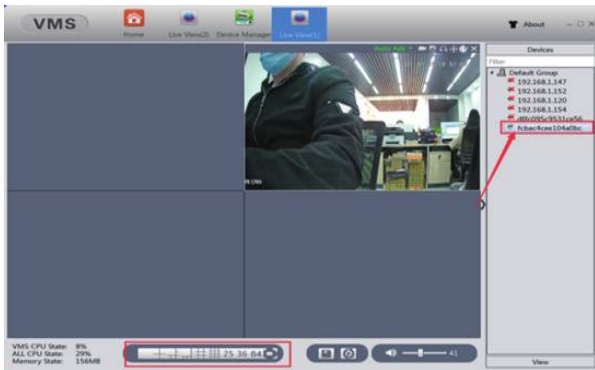


- ✓ Device Name: Any name
- ✓ Login Type: Must choose " Cloud ID "
- ✓ CloudID: Under the robot, (fcbac4cxxxxxx)
- ✓ User Name: admin or not
- ✓ Password: any or not

5. Show connected (Connected Successfully)---Home---Live View



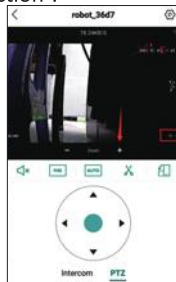
IN Live View--Select the display location and double-click the device (serial number)



FAQ

Q1. For PTZ camera ,how to use zoom function ?

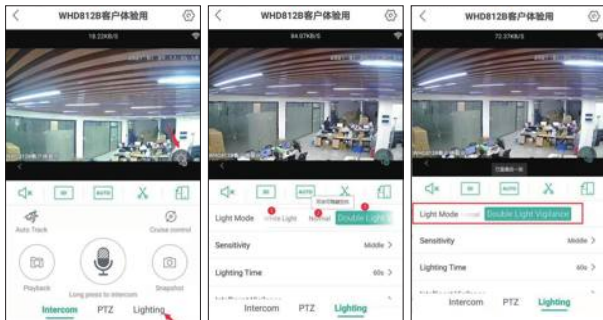
1. Go to ICsee APP---directly find zoom button---click “ + ” / “ - ”----you will find the image change
2. If your camera is digital zoom ,the image will not be clear.



Q2. How to open color night vision? (some cameras can't support ,all refer to product detail on aliexpress)

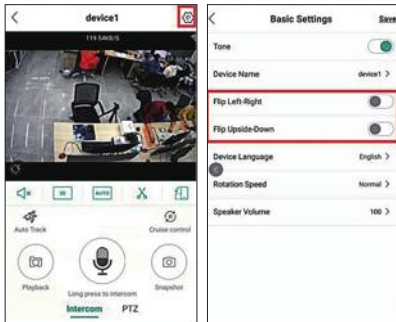
1. Go to ICsee APP to play
2. Click “ **Lighting** ”---Mode 1: White light Mode 2: Normal Mode 3 :Double Light Vigilance

- A. Choose “ **White light** ”. When it is at dark , camera will show white light , and image will show color
- B. Choose “ **Normal** ”. When it is at dark , camera will show red light and that light can't turn off ,image will show black and white
- C. Choose “**Double Light Vigilance** ”. When it motion detection, camera will show white light and frash , image will show color.



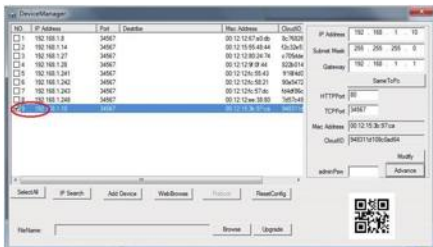
Q3. How to flip picture

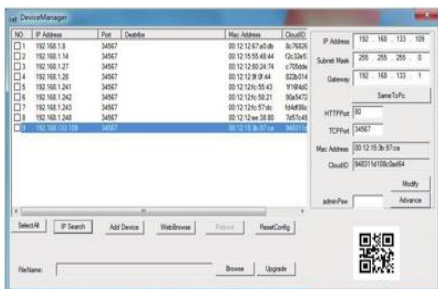
1. Go to ICsee APP
2. Click “ **Settings** ”----Basic Settings----Flip Left-Right /Flip Upside-Down



Q4. How to find camera's ip address ?

1. Keep camera work on the same router with your computer/better use LAN cable to connect camera with your router
2. Install Devicemanager software on computer :
<http://www.hiseeu.com/images/article/20190215trecge.zip>
3. Click search---choose ip address---change 's ip address---Same to pc---Modify---confirm "Save config to device successful"---search again
4. If with the same gateway , you can directly use ip address to login in IE browser (user name : admin password : as you set)





Q5. IF forget password ,how to find it?

1. Go to press reset button on camera over 30 seconds ,camera will sound
2. Go to connect camera on APP again

Q6. IF camera show offline ,how to solve ?

1. Confirm adapter work
2. Go to take camera near your router ,maybe signal is weak
3. If still can't make it online ,directly use wires connect with router to check LAN port blink or not
4. Contact with our after-sale service

Q7. About recording /SD card

1. Currently, the camera supports FAT32G format Class6, Class10 TF Card, max supports 128G. When the TF Card is full.it will delete earlier video automatically and loop recording
2. If your camera can't recognize SD card ,please check SD card format---power camera off---insert SD card---power camera---reset camera to check .
3. NVR can also be used for video recording management of multiple cameras

Q8. About Cloud service

1. Some camera support this function , some cameras can't support. Please refer to Product Link on our store
2. In generally ,there are 7 days to experience for free
3. If you don't need it , don't open this function
4. This function needs to charge the money

***Thanks for reading ,if our product is perfect,hope you can give us full stars feedback .More information,please contact with our after-sale service.**