

HD IP CAMERA USER GUIDE

Camera model : HB612-3.6, HB612-P-3.6, HC612-3.6, HC612-P-3.6, HB212-P-3.6, HC615-3.6, HC615-P-3.6, HM110, HB21X, HB41X

Support

Amazon: johnny@hiseeu.com
Aliexpress: support@hiseeu.com

Feature Lists

- 7x24 hours online live HD video preview
- Remote access via web browsers(IE browser)
- Easy P2P monitoring via smart phone APP: XMEye(Android/IOS)
- ONVIF compatible: Easy access to third-party NVR and video surveillance system
- Optional POE , Audio, lens, Power supply

Note: This manual may contain some incorrect information, even though it was published with our carefully proofreading. The new updates will be added to the next release without notice. Your valuable advice is really appreciated.

Connecting the camera to system (reference only)

Figure 1: Working With POE NVR

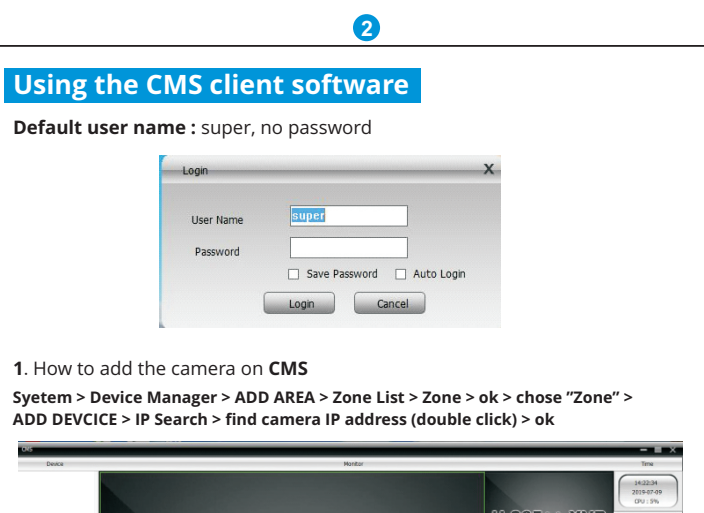
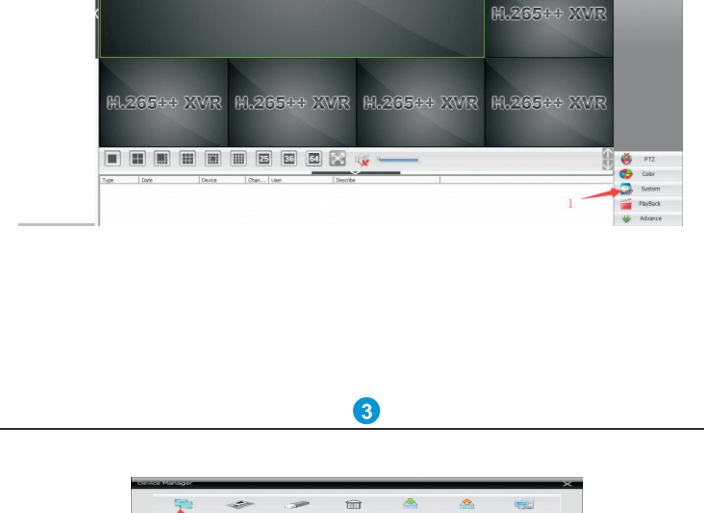


Figure 2: Working With PoE Switch



- Note:**
- IP camera need work with 12V power adapter and Ethernet with router
 - POE camera can power by POE NVR or POE switch with NVR power Ethernet.
 - POE camera also can work as IP camera, connect with 12V power adapter and Ethernet with router

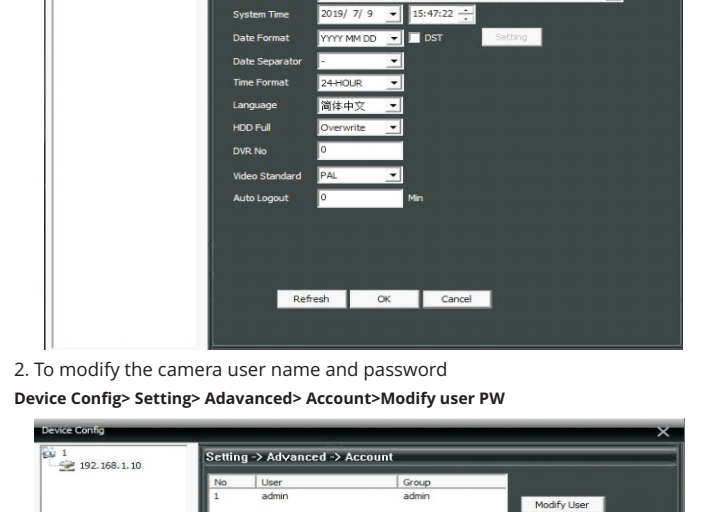
Modifying the camera's IP address

- Default IP address:** 192.168.1.10, **Username:** admin, no Password (if no problem for using, we don't suggest you set the password for your camera, restore to factory setting is very difficult).
Each IP camera has the same default IP address after leaving the factory. In order to guarantee network connectivity and access the live video, it is essential to change the camera's IP address to unique via computer before using. You can install the **DeviceManage** tool: <http://www.hiseeu.com/images/article/20190215trecge.zip>
CMS client: <http://www.hiseeu.com/CMSClientInternational.zip> or find the software on website: www.hiseeu.com to configure the IP camera.

Before modifying the IP address you'd better confirm the IP network planning and avoid IP address conflict.

Steps on Local Area Windows 10 PC : Search Windows--cmd--ipconfig/all
If the router is not 192.168.1.xx, pls change camera IP address the same as router

2. Using DeviceManage Tool

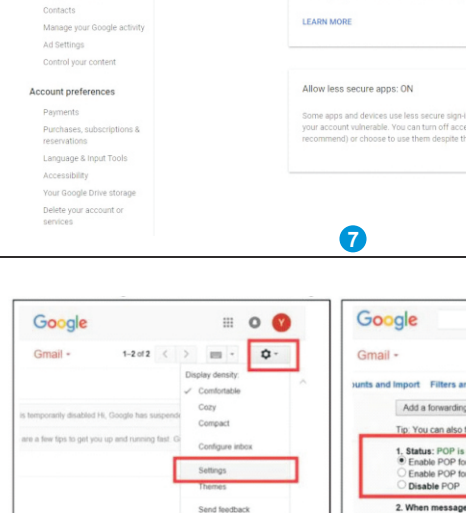


- Click **Search** and all your cameras in the LAN will be listed. Modify IP address to suit the LAN IP scheme. There are two modifying methods available:
 - Change the IP address directly, then choose **Modify**
 - Click the **SameToPC**, then choose **Modify**

You can also enable the camera DHCP function if there is a DHCP server available in the LAN. Most router has DHCP server built-in. (IP address in DHCP setting may change after device restart. We do not recommend leaving the IP camera on DHCP).

Using the CMS client software

Default user name : super, no password



- How to add the camera on CMS
System > Device Manager > ADD AREA > Zone List > Zone > ok > chose "Zone" > ADD DEVICE > IP Search > find camera IP address (double click) > ok

