

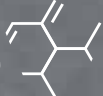
MOOD

PROFESSIONAL HAIR EXPERIENCE

LOVE LISS

KERATIN SMOOTHING TREATMENT

Images guide

KP3 
BioTechnology

MOOD

LOVE LISS

KERATIN SMOOTHING TREATMENT

THE PRODUCTS IN THE SMOOTHING SYSTEM

DEEP CLEANSING SHAMPOO
pH 7.5/8.5
1000 ml

It deeply cleanses and opens the cuticles to better prepare the hair for the straightening treatment (ideal also for preparing hair for other types of treatment).

LOVE LISS KERATIN SMOOTHING MOUSSE
pH 1.4/2.0
200 ml

It temporarily repositions the keratin chains without breaking the sulphur bridges, allowing the hair to progressively become smooth.

MAINTENANCE AT HOME

KERATIN SHAMPOO
400 ml

Silky-effect shampoo free from SLES and salt. With plant keratin and Multi-Mineral Complex. Ideal for maintaining the smoothing treatment result for a long time. For hydrated and easy-to-comb hair.

KERATIN MASK
300 ml

Silk-effect mask with plant keratin and Multi-Mineral Complex. Ideal for maintaining the smoothing treatment's result for a long time. For hydrated and easy-to-comb hair.



Salon treatment

Maintenance at home



KP3 
BioTechnology

Anti-frizz straightening mousse treatment acts on the hair remodulating its keratin chains, making it smooth and frizz-free. Based on **KP3 BIO-TECHNOLOGY**.
Biotechnological vegan complex:

1. Prevents heat damage
2. Protects the hair during treatment
3. Repairs hair fiber.

MOOD LOVE LISS

KERATIN SMOOTHING TREATMENT

STEP 1 - Head wash

Apply **Mood Deep Cleansing Shampoo** onto wet hair. Massage thoroughly until a homogeneous foam is obtained. Rinse and repeat. Leave the second shampoo on for a few minutes, then rinse. Do not use conditioner or mask

STEP 2 - Workstation

Dry hair completely, without combing it. Don't use the brush in this step.

STEP 3

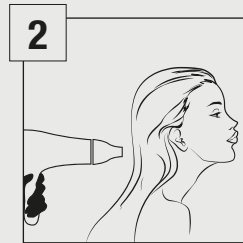
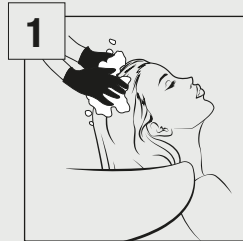
Divide the hair into 4/6 sections.

STEP 4 - Application

Wear gloves. Start from the back area. Shake the **Mood Love Liss Keratin Smoothing Mousse** bottle before use. Work in narrow sections starting from the bottom. Apply a sufficient amount of product to saturate the strand, starting 1 cm from the root. With the help of a comb, distribute the mousse evenly over the lengths and tips, making sure the strands are evenly saturated.

STEP 5

Continue in the same way, throughout the hair, working from the lower strands and moving upwards. Leave on for 30/ 45 minutes. The application time varies depending on the type of hair and the sensitivity of the structure: hair that is more damaged or treated requires shorter application times.



STEP 6 - Head wash

Once the application time is over, rinse the hair for 6-10 seconds. Use warm water and remove excess water by dabbing with a towel.

STEP 7 - Workstation - to flat iron

Dry the hair completely, flattening the volume with the help of a brush. Once finished, use the hair straightener to smooth narrow sections of hair, about 1 cm, starting from the back area (nape) and progressing over the entire hairline, from the bottom to the top. For the temperature of the hair straightener and the number of passes, follow the instructions in the table "guide to hair straightener temperature and number of passes".

STEP 8 - Head wash

After using the straightener, let the hair cool for a few minutes. Rinse the hair with lukewarm water. Rinse thoroughly until all product residues have been completely eliminated.

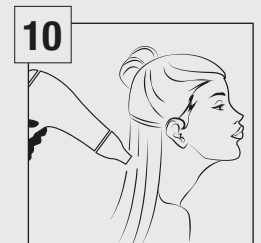
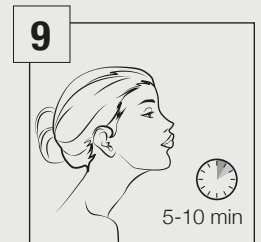
STEP 9

After rinsing the hair, apply a generous amount of **Mood Keratin Long Hair Mask** and massage thoroughly. Leave on for 5 to 10 minutes. Rinse with warm water.

STEP 10 - Workstation

Dab and dry with a hairdryer, directing the air jet from top to bottom. Finish the treatment by passing the straightener through the hair again and defining the final style.

PERFECT SMOOTHNESS METHOD

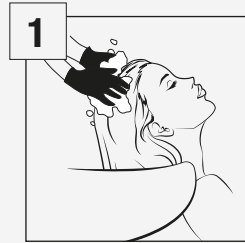


MOOD LOVE LISS

KERATIN SMOOTHING TREATMENT

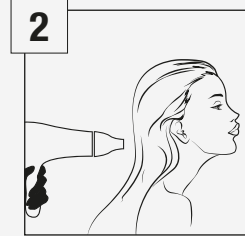
STEP 1 - Head wash

Apply **Mood Deep Cleansing Shampoo** onto wet hair. Massage thoroughly until a homogeneous foam is obtained. Rinse and repeat. Leave the second shampoo on for a few minutes, then rinse. Do not use conditioner or mask.



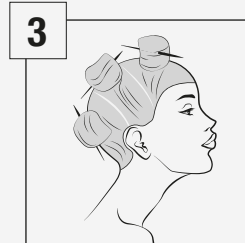
STEP 2 - Work station

Dry hair completely, without combing it. Don't use the brush in this step.



STEP 3

Divide the hair into 4/6 sections.



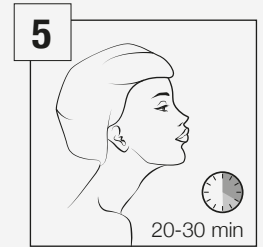
STEP 4

Wear gloves. Start from the back area. Shake the **Mood Love Liss Keratin Smoothing Mousse** bottle before use. Work in narrow sections starting from the bottom. Apply a sufficient amount of product to saturate the strand, starting 1 cm from the root. with the help of a comb, distribute the mousse evenly over the lengths and tips, making sure the strands are evenly saturated.



STEP 5

Continue in the same way, throughout the hair, working from the lower strands and moving upwards. Leave on for 30/ 45 minutes.



STEP 6 - Head wash

Once the application time is over, rinse the hair for 6-10 seconds. Use warm water and remove excess water by dabbing with a towel.



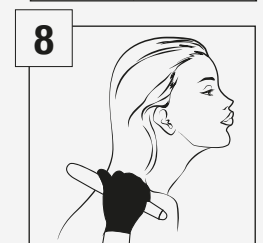
STEP 7 - Workstation

Dry the hair completely, flattening the volume with the help of a brush.



STEP 8

For the temperature of the hair straightener and the number of passes, follow the instructions in the table "guide To Hair Straightener Temperature And Number Of Passes".



Note: this treatment lasts less than the PERFECT SMOOTHNESS METHOD

GUIDE TO HAIR STRAIGHTENER TEMPERATURE AND NUMBER OF PASSES

PERFECT SMOOTHNESS METHOD

Fine, damaged, blonde or lightened hair, natural grey, with 75% highlights, hair dyed with red shades.	TEMPERATURE 160 - 170 °C Number of passes: 7 to 9	TEMPERATURE 320 - 350 °F Number of passes: 7 to 9
Coloured hair, with 50% highlights.	TEMPERATURE 170 - 180 °C Number of passes: 10 to 12	TEMPERATURE 350 - 370 °F Number of passes: 10 to 12
Medium diameter natural hair.	TEMPERATURE 190 - 200 °C Number of passes: 12 to 15	TEMPERATURE 380 - 400 °F Number of passes: 12 to 15
Coarse and resistant natural hair.	TEMPERATURE 200 - 210 °C Number of passes: 15 to 18	TEMPERATURE 400 - 410 °F Number of passes: 15 to 18

WARNING: the strand test is essential if hair has been previously treated with straightening products containing thioglycolate, sodium hydroxide or guanidine and whenever the hair appears very damaged and sensitized.

ANTI-FRIZZ CONTROL METHOD

Fine, damaged, blonde or lightened hair, natural grey, with 75% highlights, hair dyed with red shades.	TEMPERATURE 160 - 170 °C Number of passes: 5 to 7	TEMPERATURE 320 - 350 °F Number of passes: 5 to 7
Coloured hair, with 50% highlights.	TEMPERATURE 170 - 180 °C Number of passes: 5 to 7	TEMPERATURE 350 - 370 °F Number of passes: 5 to 7
Medium diameter natural hair.	TEMPERATURE 190 - 200 °C Number of passes: 5 to 9	TEMPERATURE 380 - 400 °F Number of passes: 5 to 9
Coarse and resistant natural hair.	TEMPERATURE 200 - 210 °C Number of passes: 5 to 9	TEMPERATURE 400 - 410 °F Number of passes: 5 to 9

WARNING: the strand test is essential if hair has been previously treated with straightening products containing thioglycolate, sodium hydroxide or guanidine and whenever the hair appears very damaged and sensitized.

MOOD



@moodhairofficial
mood@moodme.it