



## ***Headset Adjuster Clamp Installation***

### **To install:**

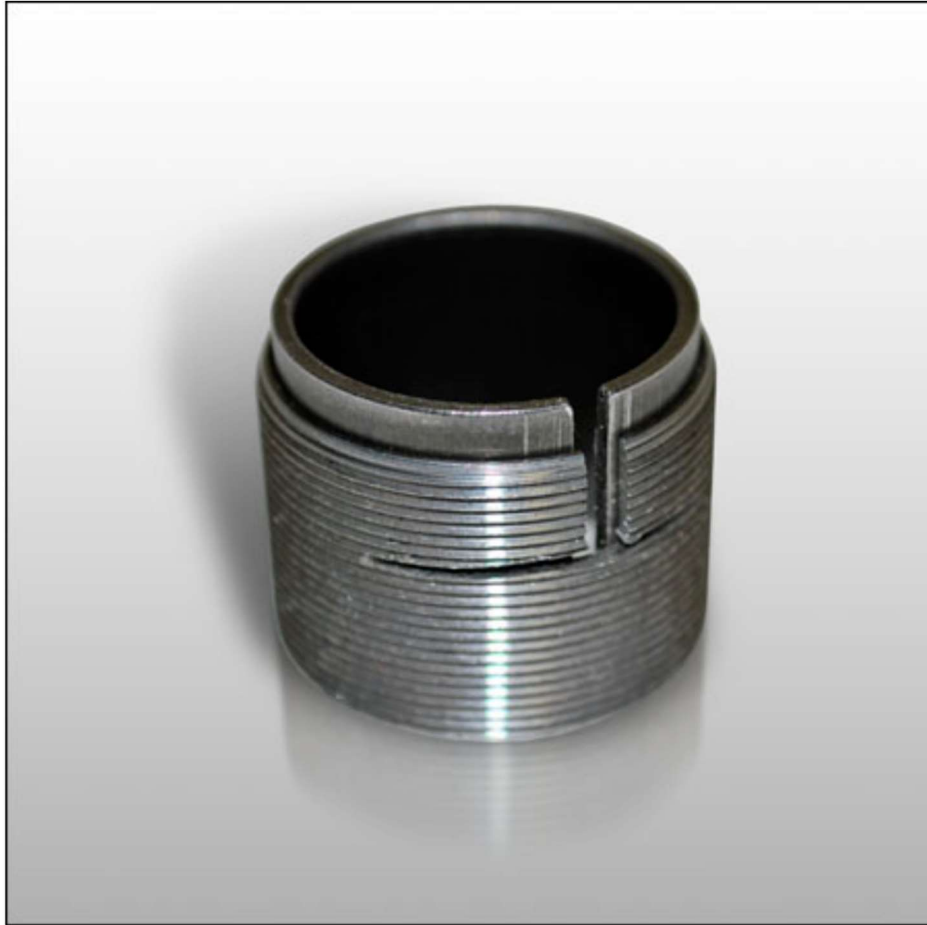
**1.** If the threaded sleeve does not have a slot cut 90° to the vertical slot, use a hacksaw to cut a slot at the bottom of the vertical slot so the cross slot is about 3/8" on either side of the vertical slot. (Headset Adjuster Clamps now come with precut slots.)



**2.** Place large washer between headset & headset adjuster.



3. 1" steerer tubes need a steel sleeve. Line up slots and keep steel sleeve at the top of the adjuster sleeve.



4. Slide threaded sleeve with vertical slot up, and lock together jamb nuts over steerer tube. Make sure sleeve does not protrude below jamb nuts. Also, now would be a good time to use some Loctite #242 on jamb nuts.



**5.** Now slide clamp over exposed threaded area and tighten clamp after there are no gaps or looseness in headset. (Do not use the consumer jamb nuts to make headset adjustment).



**6.** Using two 36mm headset wrenches readjust jamb nuts to adjust headset as needed.